

Dutchmen

Class C Motorhomes





Whether you're exploring the North Atlantic Coast's quaint fishing villages, taking the family on a special trip to Disney, or rediscovering the awesome beauty of the Rocky Mountains, Dutchmen Class C Motorhomes are designed with you in mind. From well thought out floorplans to the quality materials used during assembly, Dutchmen Class C's are built to provide you with the comfort and safety that you deserve.

Take advantage of the experience and design that one of the industry's top Class C manufacturers has to offer – and rediscover America in a Dutchmen Class C Motorhome!



Overhead Storage
Compartments with Solid
Oak Doors Throughout

Ducted Roof
Air Conditioning System

Optional Day/Night Shades
Throughout

Optional Entertainment
Center with 25" TV and
Slideout Bunk

Durable
High-Quality
Fabrics

Burl-Wood
Dash Insert

Extra Large
Double Sinks

Easy-Access Flip Up Storage
Under Sofa

Dutchmen Slideouts

If you're looking for a slideout floorplan that offers a tremendous amount of living room space without sacrificing interior storage, then you're looking for the 31S Dutchmen. This floorplan comes standard with overhead cabinets built into the slide room and a flip up sofa for easy-access to the valuable storage underneath. The slide room is very easy to operate and is built for years of enjoyment.



Dutchmen's bathrooms have all the amenities of home. Some floorplans feature garden showers for additional luxury. All Dutchmen bathrooms come with a medicine cabinet, vanity and light bar. The popular skylight option allows for additional head room in the shower.



The durable exterior storage compartments in the Dutchmen are constructed of seamless Roto-cast®. These compartments provide a strong area and because they are seamless, they virtually eliminate the possibility of water intrusion. The impressive rear pass-through storage area offers a great place to carry all your large items.

Most models are designed to be manufactured on either a Ford Motor Company or General Motors' chassis. Both chassis are designed to fully utilize Four Winds patented E.M.T. (Energy Mount Transfer) system. This proven innovation in chassis design completely isolates the



body of the

motorhome from

the chassis by utilizing a series of carefully

placed, heavy-duty, high performance rubber

grommets. The E.M.T. system increases road

comfort and stability and improves road handling, while virtually

eliminating the transfer of vibration and road noise to the interior of the coach.

This unique system is another example of Dutchmen's state-of-the-art technology and superior design and construction.



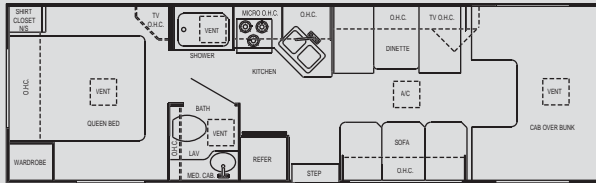
Four Winds' Patented E.M.T. Suspension System

All Dutchmen bedrooms are designed for your comfort. Most floorplans feature walk-around queen beds with standard bedroom TV cabinet. Also standard are the innerspring mattress, window treatments and matching bedspreads with pillow shams. Queen bed tops come equipped with gas lift struts for easy access to the valuable under bed storage compartment.

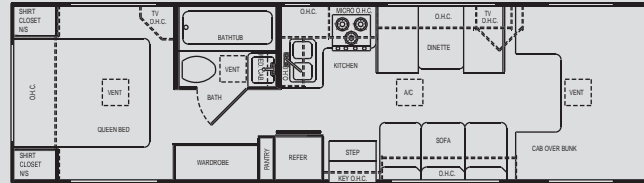


Dutchmen Floorplans

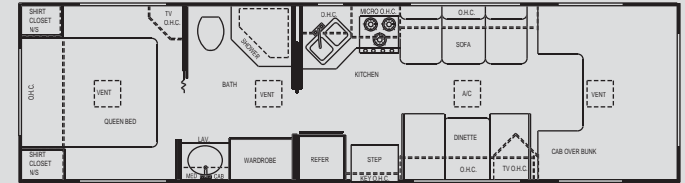
28A



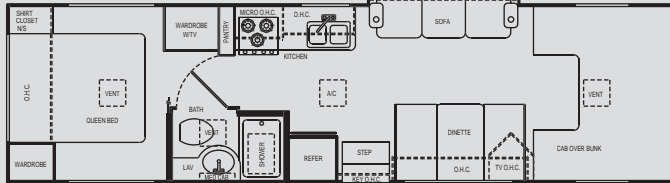
31QSB



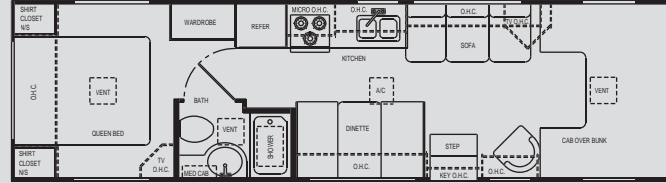
31N



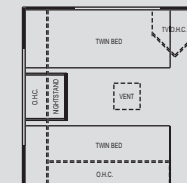
31S



31Z

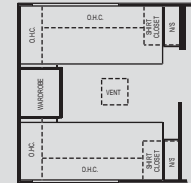


Twin Bed Option



(31' Only)

Twin Bed Option



(28' Only)

Dutchmen Class C Standard Features

Exterior

- 1 1/2" x 1 1/2", 16 gauge tubular steel welded floor system
- Aluminum running boards
- Factory-installed awning
- Factory-installed hitch
- Full rear frame extension, engineered to maintain structural integrity and towing efficiency
- Fully-insulated ceiling ducted air conditioning and in-floor residential-style heating
- Fully laminated roof, walls and floors incorporating energy-saving high-density block foam insulation
- Fully-welded tubular aluminum roof and sidewall cage construction
- Heated and enclosed Roto-cast® holding tanks
- Patented E.M.T. system consists of a rubber mounting suspension system on the chassis that absorbs and isolates road vibration for a smoother ride

Exterior (Continued)

- Large pass-through exterior storage compartment
- Premium one-piece rubberized roof
- Seamless Roto-cast® storage compartments w/flush mount doors
- Seamless fiberglass exterior sidewalls
- Widebody design

Appliances

- 13,500 BTU ducted roof air conditioner (front)
- Coleman direct cool air conditioner
- Cable TV hook-up
- Electronic ignition water heater w/standard water heater bypass kit
- Fully-equipped galley includes: a double-door refrigerator, 3-burner high-output gas range w/oven, and microwave
- Generator
- Name brand appliances
- Phone jack
- Premium digital AM/FM cassette stereo

Comfort/Convenience/Safety

- Bedroom TV cabinet (n/a with Twin Beds)
- Burl-wood dash insert with matching burl-wood drink tray cover
- Deluxe exterior mirrors
- Easy-access flip-up storage sofa
- Front TV cabinet (n/a w/entertainment ctr)
- Innerspring mattress with comforter
- LP leak and CO detectors
- Power windows and door locks
- Radius corner entry door & compartment doors
- Residential linoleum (*galley area*)
- Rubber tread entry steps
- Spacious overhead cabinetry w/ raised dark-oak doors
- Spare Tire
- User-friendly hook-ups conveniently grouped in the driver side rear area on most models

Dutchmen Class C Options

- 13" color TV w/remote (*front w/swivel*)
- 13" color TV w/remote (*bedroom*)
- 4.0 KW Onan® generator
- Automatic electric step
- Battery disconnect
- Convection microwave w/3-burner range top
- Day / Night shades throughout
- Deluxe AM/FM stereo with CD player
- Emergency start
- Entertainment Center w/25" TV & slide out bunk (n/a on diesel 31')
- Fantastic® ceiling fan
- Ford diesel engine (n/a 31S or 31Z) w/ propane generator conversion and 3.6 Onan® Micro Quiet generator
- Heated, remote exterior mirrors
- Outside entertainment center w/CD player
- Outside shower
- Skylight in shower (std. on 31N)
- Twin beds with nightstand (31' models only)
- Twin beds with wardrobe (28' only)
- Video cassette recorder
- Wheel liners

Dutchmen[®] Express

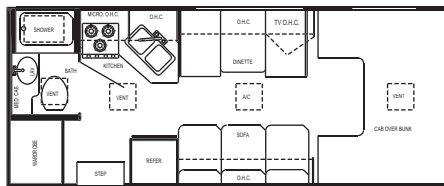
Whether you are tailgating at your favorite sporting event or taking your family on an extended vacation, the Dutchmen Express is the perfect vehicle to satisfy all your needs. The Dutchmen Express offers many of the same great features as the Dutchmen and it's available at shorter lengths.



The Dutchmen Express 23J slideout floorplan is an excellent way to enjoy your traveling experiences. It dramatically increases your daily living space and comes standard with the hide-a-bed sofa for a larger sleeping area. For an added convenience, we built overhead cabinets into the slide room for more storage.

Dutchmen Express Floorplans

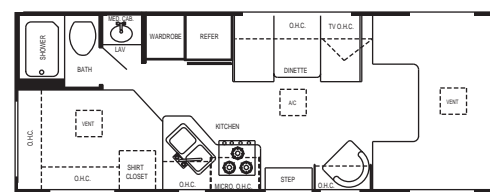
21RB



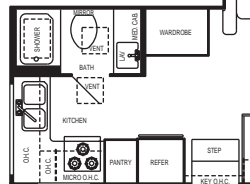
22RK



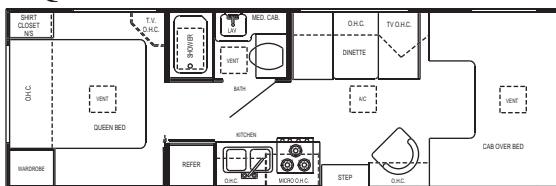
23A



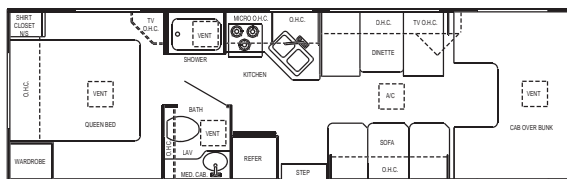
23J



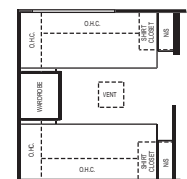
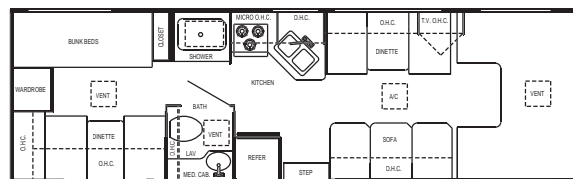
26Q



28A



28D



Dutchmen Express Class C Standard Features

Exterior

- 1 1/2" x 1 1/2", 16 gauge tubular steel welded floor system
- Factory-installed awning
- Full rear frame extension, engineered to maintain structural integrity and towing efficiency
- Fully laminated roof, walls and floors incorporating energy-saving high-density block foam insulation
- Fully-welded tubular aluminum roof and sidewall cage construction
- Large pass-through exterior storage compartment (26Q & 28A only)
- Long limousine-style wheel base for a smooth and safe ride
- Patented E.M.T. system consists of a rubber mounting suspension system on the chassis that absorbs and isolates road vibration for a smoother ride
- Premium one-piece rubberized roof
- Seamless Roto-cast® storage compartments
- Seamless fiberglass exterior sidewalls
- Widebody design

Appliances / Electronics

- 13,500 BTU roof air conditioner (front)
- Cable TV hook-up
- Electronic ignition water heater w/standard water heater bypass kit
- Fully-equipped galley includes: a double-door refrigerator, 3-burner high-output (H.O.) gas range top, residential-style microwave
- Name brand appliances
- Phone jack
- Premium digital AM/FM cassette stereo

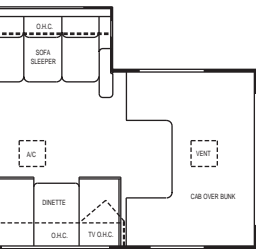
Comfort/Convenience/Safety

- Bedroom TV cabinet (26' & 28' only n/a with Twin Beds)
- Front TV cabinet (n/a w/entertainment ctr)
- LP leak and CO detectors
- Innerspring mattress with comforter (most models)
- Power windows and door locks (Ford only)
- Raised dark-oak cabinet doors
- Rubber tread entry steps
- Seatbelts throughout
- Spacious overhead cabinetry
- Spare Tire
- User-friendly hook-ups conveniently grouped in the driver side rear area on most models
- Windshield privacy curtain



Dutchmen Express Class C Options

- 13" color TV w/remote (front w/swivel)
- 13" color TV w/remote (bedroom)
- 4.0 KW Onan® generator
- 5.0 Generac generator
- Additional bifold door (hallway)
- Aluminum running boards
- Automatic electric step
- Battery disconnect
- Convection microwave w/3-burner H.O. gas range top
- Day/Night shades throughout
- Deluxe exterior mirrors
- Deluxe AM/FM CD player
- Emergency start
- Entertainment center w/19" TV & slideout bunk (n/a on 23J)
- Entertainment center w/25" TV & slideout bunk (23J only)
- Fantastic® ceiling fan
- Ford diesel engine (26' & 28' only) w/propane generator conversion and 3.6 Onan® Micro Quiet generator
- Heated holding tanks (Std. on 23J)
- Hitch
- Outside entertainment center w/CD (n/a 21RB)
- Outside shower
- Oven w/3 burner H.O. gas range top
- Power windows and locks (8.1L Chevy only)
- Skylight in shower
- Twin beds w/wardrobe (26Q & 28A)
- Video cassette recorder



Twin Bed Option (26' & 28' Only)

Dutchmen & Dutchmen Express Interiors



Morris Taupe



Wildwood Green



Orlando Slate Blue

Why a Thor Product Is Your Best RV Value.

Thor industries, Inc., listed on the New York Stock Exchange, proudly traces its history back seventy years to the pioneering days of the RV industry with the founding of Airstream, the industry's oldest and most renowned brand. Our total commitment to quality and our philosophy of putting our customers first has led to our continuous growth; today Thor is the second largest builder of RVs in North America. Thor's strong financial condition and years of solid growth are your assurance that we will be here to serve you for years to come. We think this extra peace of mind is important when you are making a significant investment. Because we are #2, we work harder than other manufacturers to satisfy you. Our customers are always #1 with us.

Thor's exclusive Full 2-Year Limited Warranty

We're so confident in the design and construction of our products that they are covered by Thor's exclusive Full 2-Year Limited Warranty: "bumper-to-bumper" coverage to protect your RV investment. The best protection in the RV industry - by far.

This brochure is printed on recycled paper as part of Thor's corporate effort to minimize waste and conserve our natural resources. Providing safe, fuel-efficient recreational vehicles is Thor's way of further demonstrating our role as the industry leader in safeguarding our nation's environment.



Product information, specifications, and photography in this brochure were as accurate as possible at time of printing. Photographs may contain some features that are optional on your vehicle. Since we continually strive to improve our products, actual products may differ. Prices and specifications are subject to change without notice. All capacities are approximate and dimensions are nominal. Some features or options may be different or unavailable in Canada.

SPECIFICATIONS	Dutchmen Express							Dutchmen					
	21RB	22RK	23A	23J	26Q	28A	28D	28A	31N	31QSB	31S	31Z	
2002 Dutchmen Class C													
Ford Engine	-	6.8L	6.8L	6.8L	6.8L	6.8L	6.8L	6.8L	6.8L	6.8L	6.8L	6.8L	6.8L
Wheel Base	-	174"	158"	180"	176"	190"	190"	190"	208"	208"	218"	216"	216"
GVWR	-	11,500	11,500	14,050	14,050	14,050	14,050	14,050	14,050	14,050	14,050	14,050	14,050
GAWR (Front)	-	4,600	4,600	4,600	4,600	4,600	4,600	4,600	4,600	4,600	4,600	4,600	4,600
GAWR (Rear)	-	8,350	8,350	9,450	9,450	9,450	9,450	9,450	9,450	9,450	9,450	9,450	9,450
UVW	-	9,565	9,655	10,930	10,310	10,800	10,935	11,380	11,755	11,650	12,390	12,200	12,200
GCWR	-	20,000	20,000	20,000	20,000	20,000	20,000	20,000	20,000	20,000	20,000	20,000	20,000
NCC	-	1,935	1,845	3,120	3,740	3,250	3,115	2,670	2,295	2,400	1,660	1,850	1,850
Chevy Engine	5.7L	-	8.1L	-	8.1L	8.1L	-	-	-	-	-	-	-
Wheel Base	138"	-	159"	-	177"	191"	-	-	-	-	-	-	-
GVWR	11,500	-	12,300	-	12,300	12,300	-	-	-	-	-	-	-
GAWR (Front)	4,300	-	4,300	-	4,300	4,300	-	-	-	-	-	-	-
GAWR (Rear)	8,250	-	8,600	-	8,600	8,600	-	-	-	-	-	-	-
UVW	8,560	-	9,700	-	10,100	10,420	-	-	-	-	-	-	-
GCWR	13,500	-	17,000	-	17,000	17,000	-	-	-	-	-	-	-
NCC	2,940	-	2,600	-	2,200	1,880	-	-	-	-	-	-	-
Exterior Length w/o ladder	22'3"	23'6"	24'5"	24'8"	27'4"	29'4"	29'4"	29'2"	31'7"	31'0"	32'1"	32'3"	32'3"
Exterior Height w/ A/C	10'8"	10'8"	10'8"	11'6"	10'8"	10'8"	10'8"	11'6"	11'6"	11'6"	11'6"	11'6"	11'6"
Exterior Width	99"	99"	99"	99"	99"	99"	99"	99"	99"	99"	99"	99"	99"
Interior Width	96"	96"	96"	96"	96"	96"	96"	96"	96"	96"	96"	96"	96"
Interior Height	79 3/4"	79 3/4"	79 3/4"	79 3/4"	79 3/4"	79 3/4"	79 3/4"	79 3/4"	79 3/4"	79 3/4"	79 3/4"	79 3/4"	79 3/4"
Awning Size	12'0"	13'0"	15'0"	15'0"	13'0"	14'0"	14'0"	14'0"	16'0"	16'0"	16'0"	16'0"	16'0"
Fuel Ford / Chevy (Gal.)	-/35	55/-	55/55	55/-	55/55	55/55	55/-	55/-	55/-	55/-	55/-	55/-	55/-
LPG (Pounds)	51	51	51	51	51	51	51	51	51	51	51	51	51
Fresh Water (Gal.)	29	29	41	26	41	41	41	41	41	41	41	41	41
Waste Water (Gal.)	22	21	22	25	25	25	25	30	30	30	30	30	30
Gray Water (Gal.)	21	21	21	25	20	21	21	35	35	35	35	35	35
Furnace	25,000	25,000	25,000	25,000	30,000	30,000	30,000	30,000	30,000	30,000	30,000	30,000	30,000

Vehicle Loading:

Every effort has been made to provide the greatest number of options for the recreation vehicle owner. Along with these choices comes the responsibility to manage the loads that are imposed by the choices so that they remain within the manufacturer's specified chassis weight limits. Do not overload the recreation vehicle.

Dry Weights:

Based on standard features; optional equipment not included. Net carrying capacity (NCC) determined by subtracting unloaded vehicle weight (UVW) from gross vehicle weight. (GVWR) and includes fluids, options, and cargo. Liquid capacities and weights are approximations only.

Warning:

This information is intended as a guide only. Weights of individual vehicles may vary. Consult your owner's manual for complete loading, weighing, and towing instructions.

IMPORTANT: The towing vehicle's braking system is rated for operation at GVWR (Gross Vehicle Weight Rating), NOT at GCWR (Gross Combined Weight Rating). A separate functioning brake system is required for any towed vehicles or trailers weighing more than 1000 lbs. (450 KG) when fully loaded.

YOUR LOCAL DEALER



P.O. Box 1486 • Elkhart, IN 46515-1486
(219)266-1111 • Fax (219)294-8971
www.fourwinds-rv.com

