

➤ **Vendor: Microsoft**

➤ **Exam Code: 70-680**

➤ **Exam Name: TS: Windows 7, Configuring**

➤ **Question 401 -- Question 450**

[Visit PassLeader and Download Full Version 70-680 Exam Dumps](#)

**QUESTION 401**

You need to prevent a custom application from connecting to the Internet.  
What should you do?

- A. From Windows Firewall, add a program.
- B. From Windows Defender, modify the Allowed items list.
- C. From Windows Firewall with Advanced Security, create an inbound rule.
- D. From Windows Firewall with Advanced Security, create an outbound rule.

**Answer: D**

**Explanation:**

Outbound Rule

Outbound rules allow you to block and allow traffic that originates on the computer from traveling out to the network. Creating WFAS Rules

The process for configuring inbound rules and outbound rules is essentially the same: In the WFAS console, select the node that represents the type of rule that you want to create and then click New Rule. This opens the New Inbound (or Outbound) Rule Wizard. The first page, allows you to specify the type of rule that you are going to create. You can select between a program, port, predefined, or custom rule. The program and predefined rules are similar to what you can create using Windows Firewall. A custom rule allows you to configure a rule based on criteria not covered by any of the other options. You would create a custom rule if you wanted a rule that applied to a particular service rather than a program or port. You can also use a custom rule if you want to create a rule that involves both a specific program and a set of ports. For example, if you wanted to allow communication to a specific program on a certain port but not other ports, you would create a custom rule.

**QUESTION 402**

You have two computers named Computer1 and Computer2 that run Windows 7.  
You need to ensure that Computer2 has exactly the same firewall rules as Computer1.  
What should you do on Computer1?

- A. Run Winrm.exe quickconfig.
- B. From Windows Firewall with Advanced Security, select Export Policy.
- C. From Windows Firewall with Advanced Security, click Inbound Rules and then click Export List.
- D. Open Local Security Policy.  
Right-click IP Security Policies on Local Computer and then click Export List.

**Answer: B**

**Explanation:**

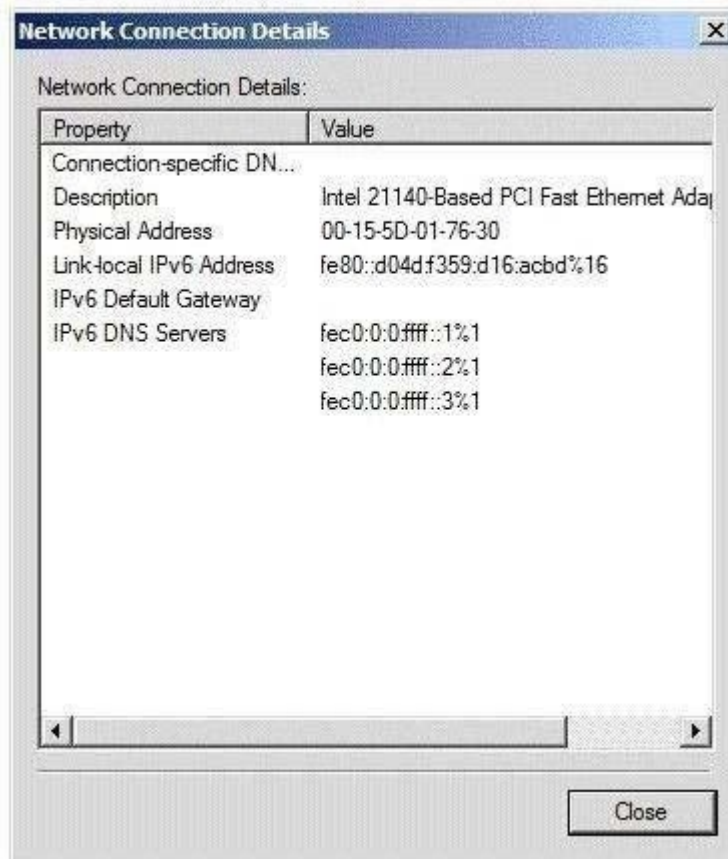
Importing and Exporting Firewall Configuration Most organizations that use clients running Windows 7 apply firewall rules through Group Policy. In the event that you need to support a number of stand-alone clients running Windows 7, you can replicate complex firewall configurations using the WFAS Import Policy and Export Policy options. Importing and exporting policy also allows you to save the current firewall configuration state before you make changes to it. Exported policy files use the .wfw extension. Exported policies use a binary format, not Extensible Markup Language (XML) format like many other Windows 7 configuration files. You can also export and import firewall policies in the same .wfw format using the netsh advfirewall export or netsh advfirewall import commands.

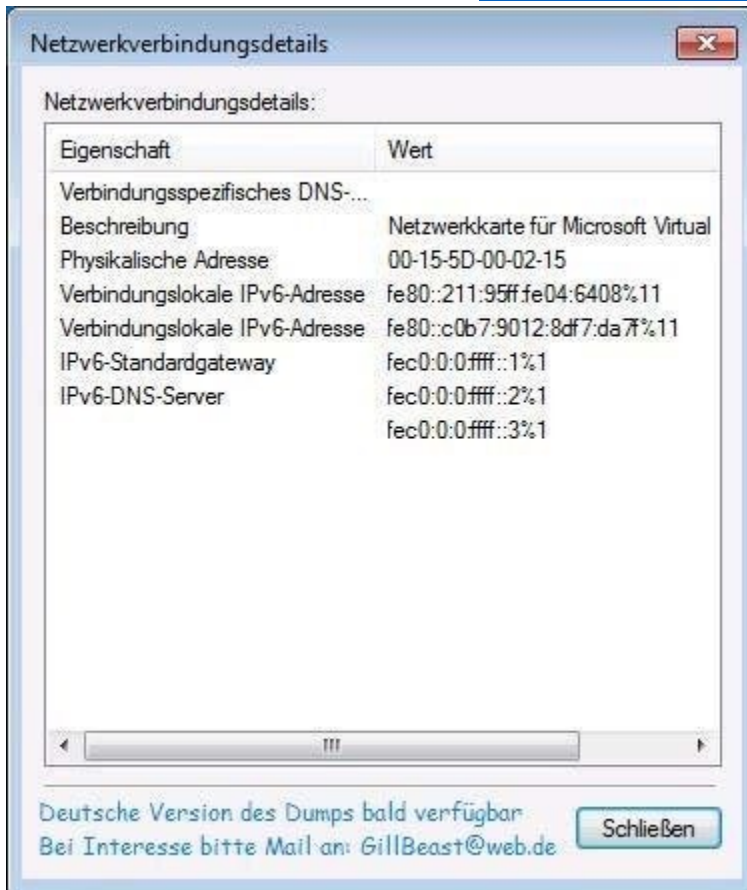
**QUESTION 403**

You have a computer that runs Windows 7. The network connection details are shown in the exhibit. (Click the Exhibit button.)

You need to manually assign an IP address of 192.168.1.50 to the computer.

What should you do first?





- A. Enable TCP/IPv4.
- B. Disable TCP/IPv6.
- C. Run Ipconfig and specify the /renew parameter.
- D. Run Netsh and specify the Interface ipv4 add address command.

**Answer: A**

**Explanation:**

IPv4 is not currently enabled and 192.168.1.50 is an IPv4 address. Therefore IPv4 is required so ENABLE it.

#### QUESTION 404

A network contains computers that run Windows 7 and Windows Vista.

A computer named Computer1 runs Windows 7.

You need to ensure that only users running Windows 7 and Windows Vista can connect to Computer1 using Remote Desktop.

In the System Properties window, on the Remote tab, what should you do?

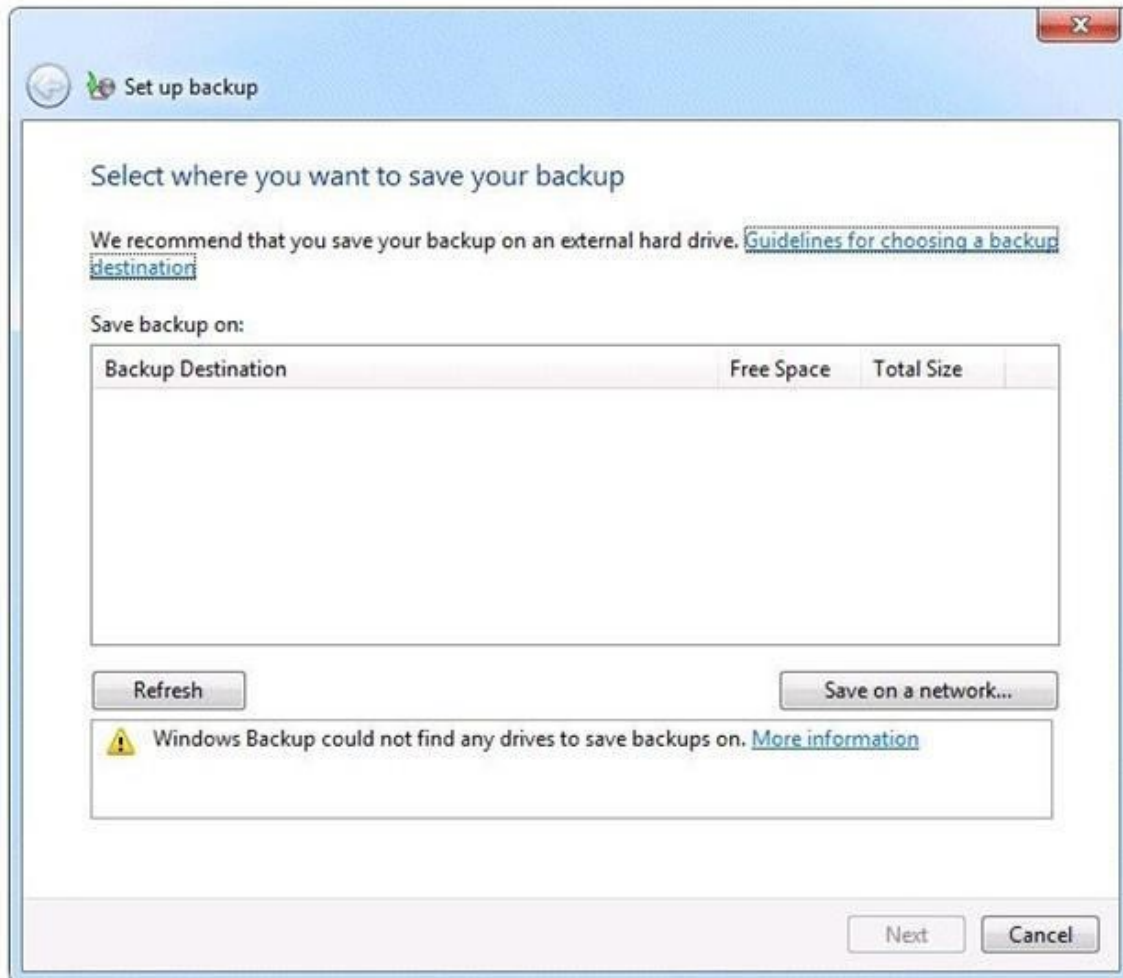
- A. Click the Advanced button.  
Select the Allow this computer to be controlled remotely check box on Computer1.
- B. Select the Allow connections only from computers running Remote Desktop with Network Level Authentication (more secure) check box on Computer1.
- C. Select the Allow connections from computers running any version of Remote Desktop (less secure) check box on Computer1.
- D. Select the Allow Remote Assistance connections to this computer check box on Computer1.

**Answer: B**

**QUESTION 405**

You have a computer that runs Windows 7.

You run the Configure Backup wizard as shown in the exhibit. (Click the Exhibit button.)



You need to ensure that you can back up the computer to a local disk drive.  
What should you do before you run the Configure Backup wizard?

- A. Connect a removable disk.
- B. Log on as an administrator.
- C. Start the Volume Shadow Copy Service (VSS).
- D. Add your user account to the Backup Operators group.

**Answer: A**

**Explanation:**

An external hard drive External hard drives can be removed and stored in a secure location. However, they are typically slower than internal hard drives and tend to be less reliable, mainly because they are by default formatted using FAT rather than NTFS. You cannot use an external hard drive for a System Image backup unless you convert its filing system to NTFS. Because it is easily removable, it is more likely that an external hard drive will be missing when a scheduled backup is required. (Local disk drive was specified, not internal) NOT Administrator You need

administrator credentials to configure scheduled backups or to manually initiate a backup. However, restoring files does not require administrator privileges unless a user attempts to restore another user's file. (NOTE: The issue was a lack of location to store the Backup, not being about to run the Configure Backup, thus it was assumed that the user in this scenario had administrator credentials)NOT Backup OperatorsMembers of this group are able to override file and folder access restrictions for the purpose of backing up data. You can allow a user to back up files and directories by assigning them to the Backup Operators group rather than by modifying the Back Up Files and Directories policy.NOT VSSVSS is installed on computers running Windows 7. Its startup type is Manual. The service starts as needed. If the service does not start when required, shadow copies are unavailable for backup and Windows Backup does not succeed. Nor can you create restore points and previous versions. In this case, check the service and ensure that it has not been disabled.

**QUESTION 406**

You use a computer that has Windows 7 SP1 installed. The computer has a shared folder named C:\Software.

User1 is a local user account on the computer. The account is a member of several groups that have access to the C:\Software folder.

You need to verify whether User1 can save files to C:\Software.

What should you do?

- A. Run the Net Share command.
- B. Run the Wfs C:\Software command.
- C. In the Advanced Security Settings for the Documents folder, select the Effective Permissions tab.
- D. Run the Fsutil C:\Software command.

**Answer: C**

**Explanation:**

To view effective permissions on files and folders Open Windows Explorer, and then locate the file or folder for which you want to view effective permissions.

Right-click the file or folder, click Properties, and then click the Security tab. Click Advanced, click the Effective Permissions tab, and then click Select. In Enter the object name to select (examples), enter the name of a user or group, and then click OK. The selected check boxes indicate the effective permissions of the user or group for that file or folder.

**QUESTION 407**

Hotspot Question

You use a client computer that has Windows 7 Enterprise installed. The computer is located in a branch office.

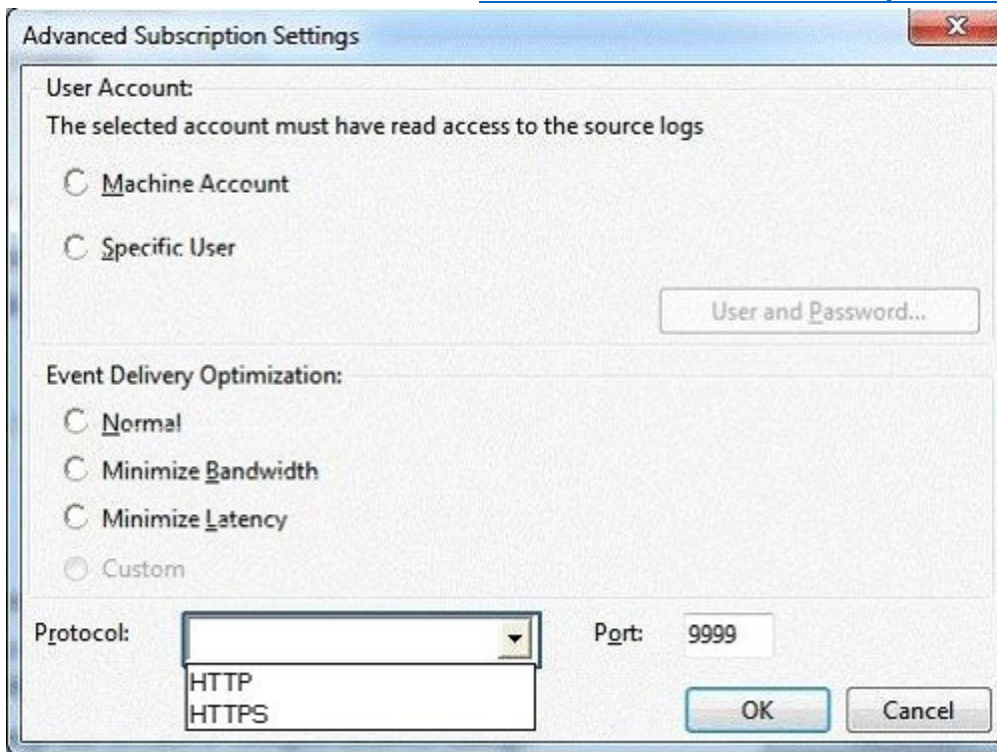
The office is connected by a wide area network (WAN) link to a company's main office.

You need to configure an event subscription that meets the following requirements:

- Forwards events across the WAN on port 3243.
- Forwards events every 6 hours.
- Protects forwarded events while transmission over the WAN network.

What should you do?

(To answer, configure the appropriate option or options in the dialog box in the answer area.)



Advanced Subscription Settings

User Account:  
The selected account must have read access to the source logs

☐ Machine Account  
☐ Specific User

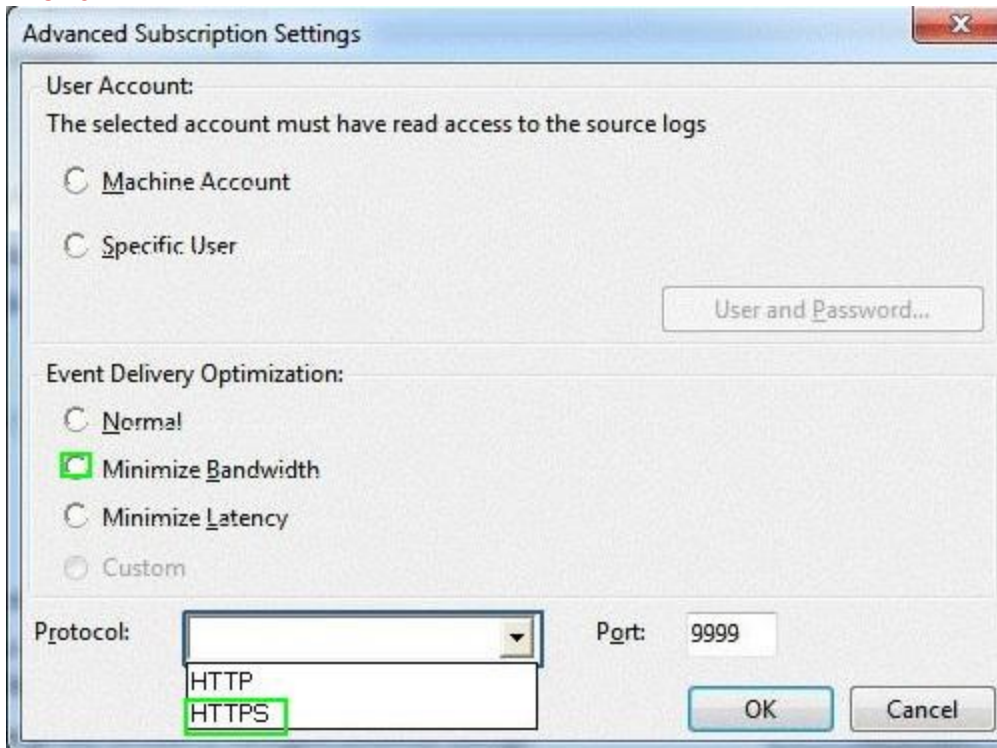
User and Password...

Event Delivery Optimization:  
☐ Normal  
☐ Minimize Bandwidth  
☐ Minimize Latency  
☐ Custom

Protocol:   
Port: 9999

OK Cancel

**Answer:**



Advanced Subscription Settings

User Account:  
The selected account must have read access to the source logs

☐ Machine Account  
☐ Specific User

User and Password...

Event Delivery Optimization:  
☐ Normal  
☒ Minimize Bandwidth  
☐ Minimize Latency  
☐ Custom

Protocol:   
Port: 9999

OK Cancel

**QUESTION 408**

Your company has an Active Directory domain and several branch locations. All sales employees use portable computers that have Windows 7 Enterprise installed. Employees report that when they travel to different branch locations, documents that must be

printed are sent to printers in their home office.

You need to ensure that documents that must be printed are automatically sent to printers at their current locations.

What should you do first?

- A. Publish all printers to Active Directory.
- B. From Devices and Printers, select Change my default printer when I change networks.
- C. From Devices and Printers, select the branch office printer, and then select set as default.
- D. Configure alternate IP settings.

**Answer: B**

**QUESTION 409**

You have a computer that runs a 32-bit version of Windows 7 Home Premium. The computer has a single partition on a single hard disk drive.

You want to test a 64-bit version of Windows 7 Ultimate.

You configure the computer for a dual boot with previously installed Windows 7 Home Premium.

You need to configure the computer to support the dual boot.

What should you do?

- A. Reinstall Windows 7 Home Premium 32 bit as a 64-bit version.
- B. Start Windows 7 Home Premium. Create and mount a new Windows Imaging Format (WIM) file with Windows 7 Ultimate files.
- C. Shrink the existing partition and create a new partition to start Windows 7 Ultimate.
- D. Install Virtual PC into Windows 7 Home Premium.

**Answer: C**

**Explanation:**

Easily Shrink a Volume on a Windows 7 Disk The Windows 7 Disk Management tool provides a simple interface for managing partitions and volumes. There is an easy way to shrink a volume to free up space so you can create a new partition on your disk.

**QUESTION 410**

You have a computer that runs Windows 7. The computer is a member of a workgroup.

You use Encrypting File System (EFS) to protect your local files.

You need to ensure that you can decrypt EFS files on the computer if you forget your password.

What should you do?

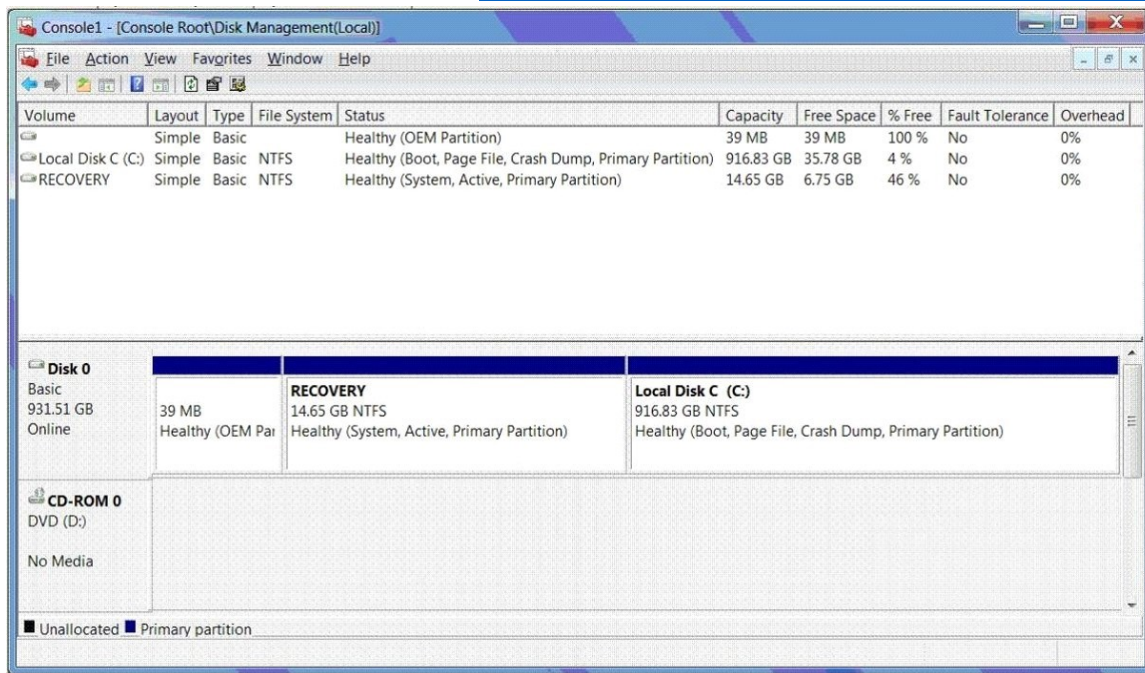
- A. From Authorization Manager, modify the Authorization Manager options.
- B. Run the cipher.exe /adduser /user:administrator command.
- C. From User Accounts, select Manage your file encryption certificates.
- D. From Credential Manager, select Back up vault.

**Answer: C**

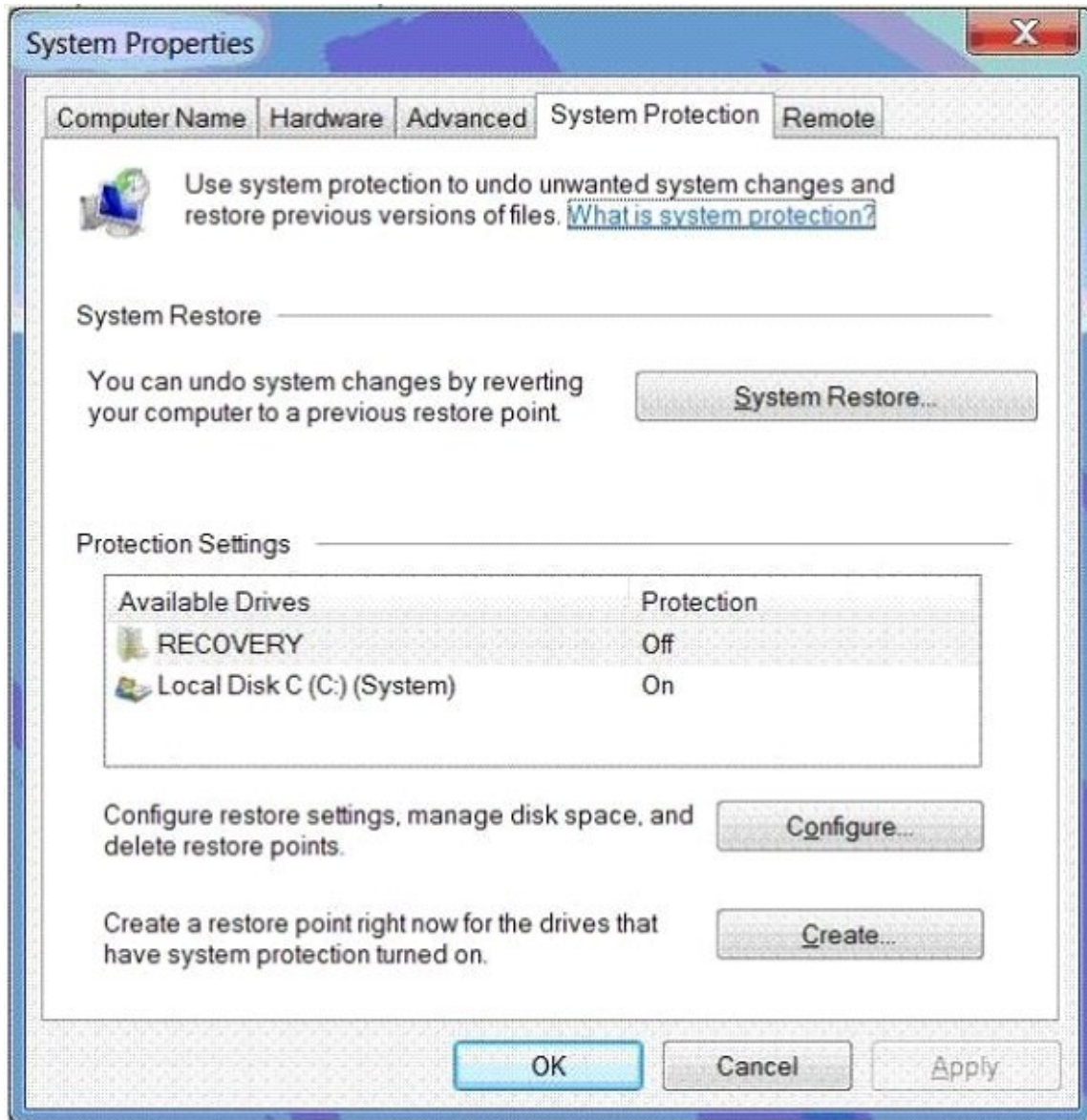
**QUESTION 411**

You use a desktop computer that has Windows 7 Ultimate SP1. The relevant portions of the computer configuration are shown in the following exhibits:

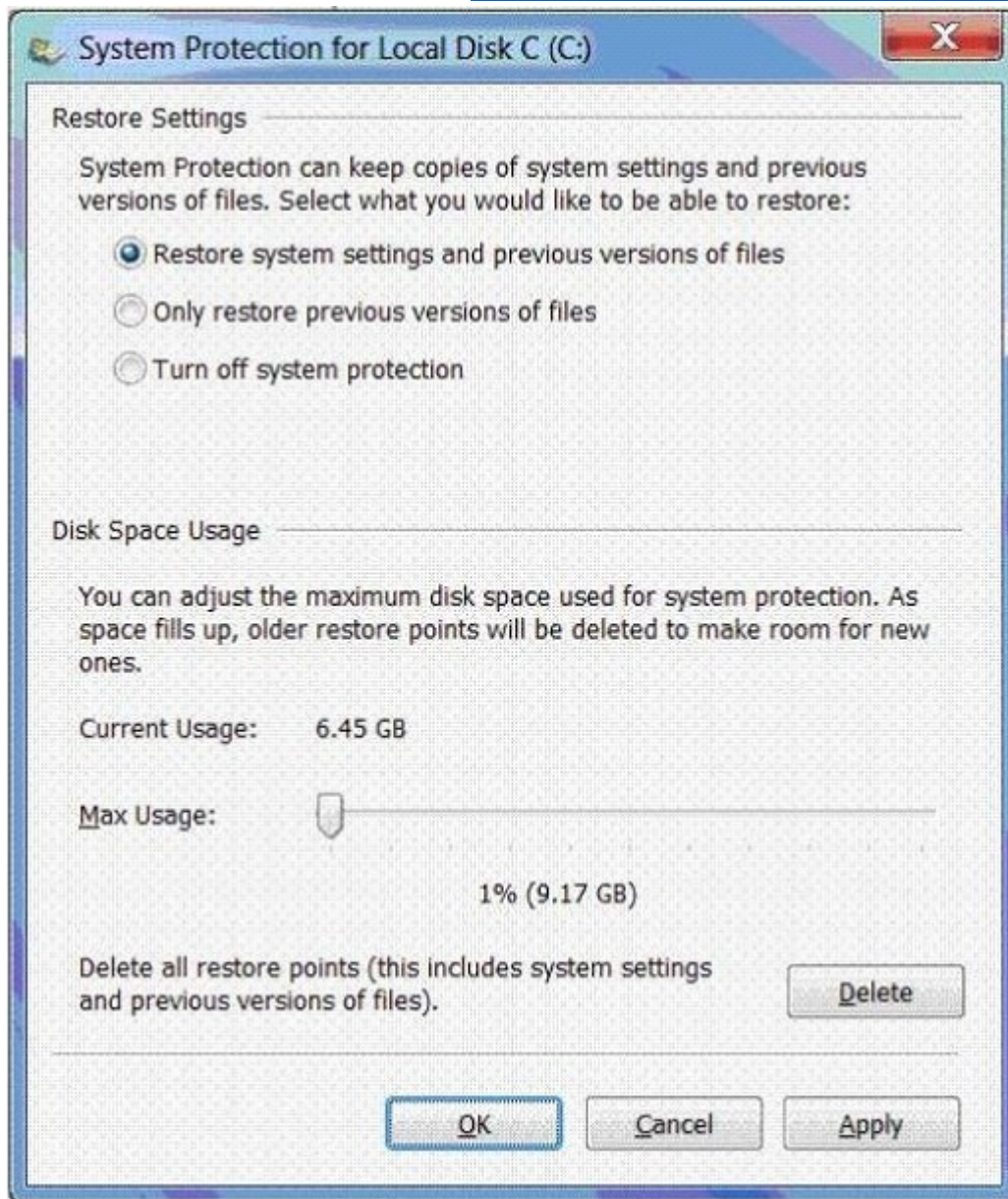
The Disk Management console (Click the Exhibit button.)



The System Properties window (Click the Exhibit button.)



The System protection for Local Disk C window (Click the Exhibit button.)



You encrypt several files on an external USB hard disk drive by using the Encrypting File System (EFS).

You need to ensure that you can access the files from another computer. What should you do?

- A. Delete restore points.
- B. Create a restore point.
- C. Perform a system restore.
- D. Search for the file in the Recycle Bin.
- E. Increase disk space used for system protection.
- F. Copy the file from a previous version of a folder.
- G. Set restore settings to Only restore previous versions of files.
- H. Run the cipher /x command from the elevated command prompt,

- I. Run the vssadmin list volumes command from the elevated command prompt.
- J. Run the vssadmin list shadows command from the elevated command prompt,
- K. Run the compact /U <file\_name> command from the elevated command prompt.

**Answer: H**

**Explanation:**

\* cipher /x[:efsfile] [<FileName>]

Backs up the EFS certificate and keys to the specified file name. If used with :efsfile, /x backs up the user's certificate(s) that were used to encrypt the file. Otherwise, the user's current EFS certificate and keys are backed up.

\* Back Up Your EFS Key

The first time that you use EFS to encrypt something, your system generates a random 256-bit number; that's the key that EFS uses whenever you encrypt something. To back up your EFS key, simply use the Cipher /x command. Cipher will reply with a message asking if you truly want to back up your EFS key--sadly, I haven't found a way to suppress this message. Press OK. The tool will then prompt you for the name of the file in which to store the backup. Don't specify a file extension; Cipher insists on the .pfx extension. For example, if you picked a file named mybackup, you now have a small file called mybackup.pfx. Next, the tool will prompt you to create a password with which to protect that file.

Once you've got that file created, copy it from your computer's hard disk to some offline location (e.g., a USB stick, a CD-ROM) and make a note of the password you've chosen. Now, in the event of unfortunate circumstances-- for example, you lose your profile, you forget your password and a systems administrator has to reset it, the system's OS fails and you need to recover files directly from the nowdead system's hard disk--you can simply restore your EFS key by double-clicking the .pfx file and running the resulting wizard. As soon as the wizard is finished, you'll be able to get to your files again.

**QUESTION 412**

Hotspot Question

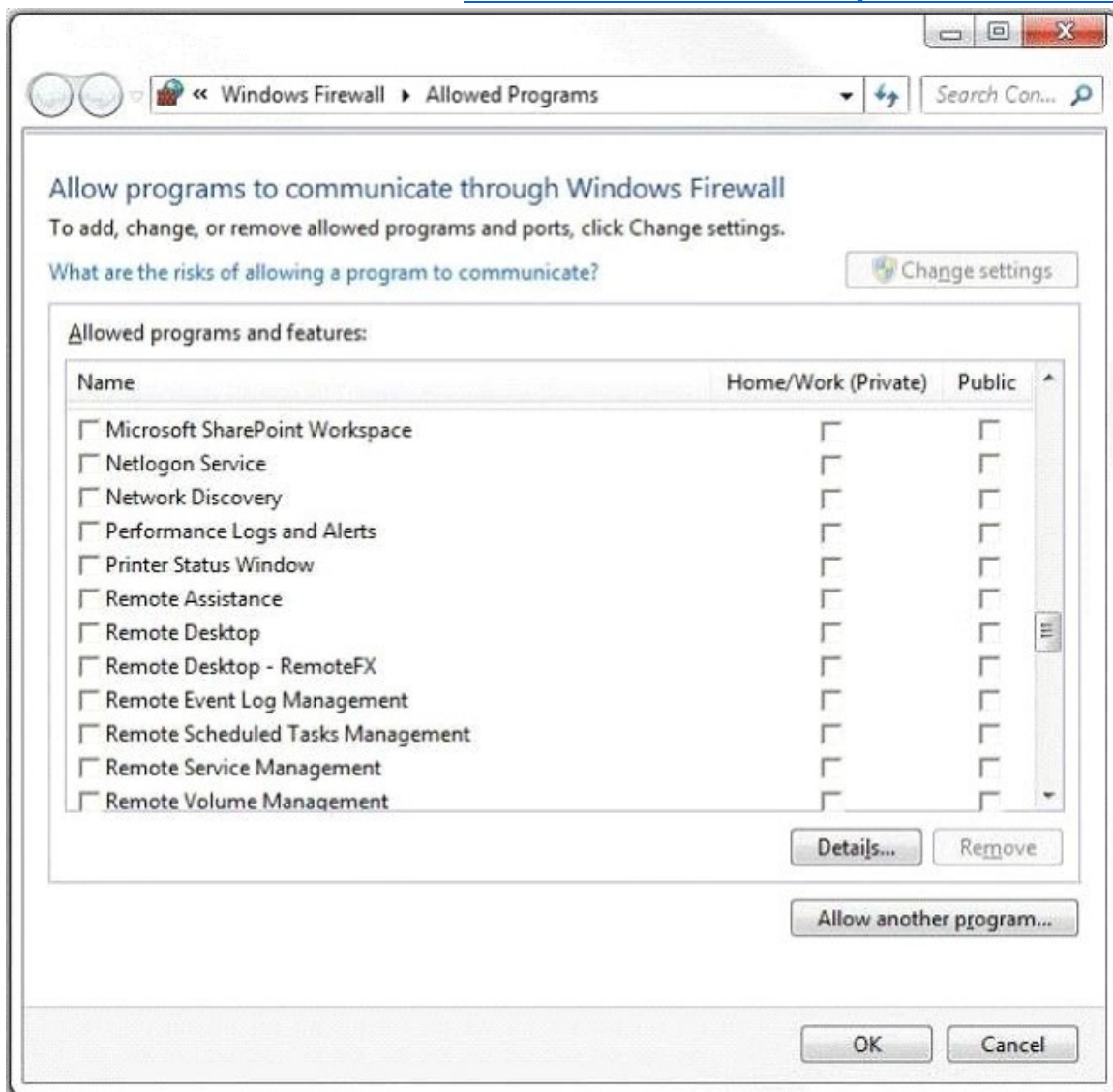
All sales employees use portable computers that have Windows 7 installed. All help desk employees use desktop computers that have Windows 7 installed.

You need to ensure that the sales employees are able to request a remote support from a help desk employee when they are in the office.

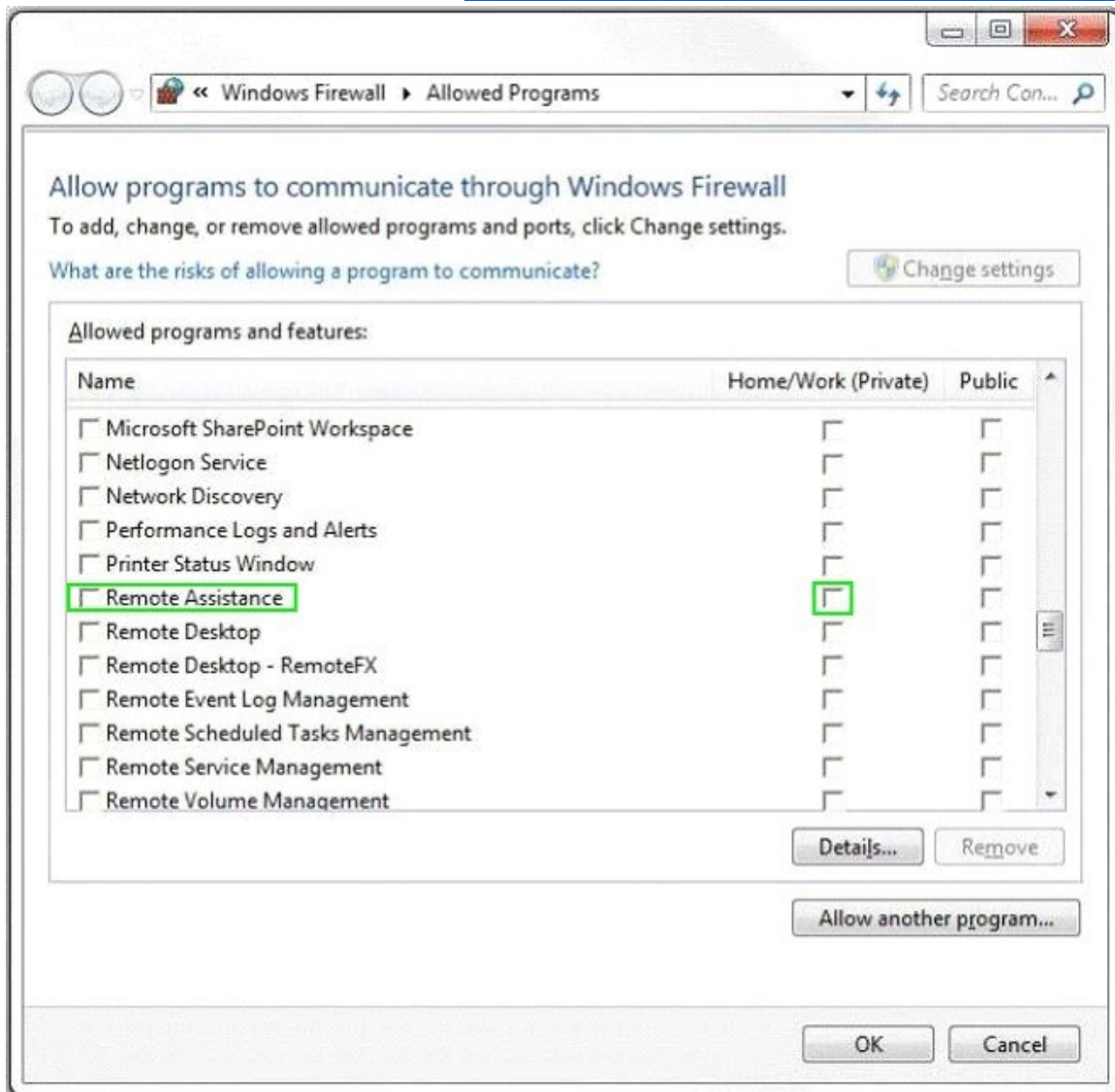
You also need to ensure that sales employees are prevented from receiving remote support during their travel.

What should you do?

(To answer, configure the appropriate option or options in the dialog box in the answer area.)



**Answer:**



**QUESTION 413**

Drag and Drop Question

Your organization needs to perform a Windows Vista to Windows 7 migration for a department with 150 computers.

You want to use User State Migration Tool (USMT) to automate the migration.

You need to move user data and custom settings from the source computers to the destination computers by using USMT with minimal downtime or impact to the end users. The transfer must include files in several custom directories located in the root directory of the boot volume.

Which four actions should you perform in sequence?

(To answer, move the appropriate four actions from the list of actions to the answer area and arrange them in the correct order. )

	Answer Area
Close all applications and run the ScanState tool by using MigUser.xml.	
Close all applications and run the ScanState tool by using MigDocs.xml.	
Install applications on destination systems.	
Log off of the system.	
Close all applications and run the LoadState tool by using MigUser.xml.	
Close all applications and run the LoadState tool by using MigDocs.xml.	

**Answer:**

	Answer Area
Close all applications and run the ScanState tool by using MigUser.xml.	Close all applications and run the ScanState tool by using MigDocs.xml.
Close all applications and run the ScanState tool by using MigDocs.xml.	
Install applications on destination systems.	
Log off of the system.	
Close all applications and run the LoadState tool by using MigUser.xml.	Close all applications and run the LoadState tool by using MigDocs.xml.
Close all applications and run the LoadState tool by using MigDocs.xml.	Log off of the system.

**QUESTION 414**

You use a computer that has Windows SP1 installed. The computer has a shared folder named c:\Software.

User1 is a local user account on the computer. The account is a member of several groups that have access to the C:\Software folders.

You need to verify whether User1 can save files to C:\Software.

What should you do?

- A. Download the Sysinternals Suite bundle from the Microsoft site.  
Run the AccessEnum tool against the C: \Software folder.
- B. Run the Net Share command.
- C. Run the Net View command.
- D. View the Share permissions on C:\Software.

**Answer: D**

**QUESTION 415**

Your company Research department includes client computers that have Windows 7 and Windows Vista installed on separate partitions in a dual-boot configuration. The computers boot into Windows 7 by default or users can choose to boot into Windows Vista during startup.

The company management has decided that the Windows Vista partition must be deleted from all the computers.

You need to ensure that the staff of the Research department are not prompted to select a boot option during startup and that Windows 7 is chosen automatically.

What should you do?

- A. In Windows Vista, from an elevated command prompt, run `bcdedit /delete {current}`.
- B. Select the Selective startup option button by using `msconfig.exe`.
- C. In Windows Vista, from an elevated command prompt, run `bcdedit /delete {default}`.
- D. In Windows 7, from an elevated command prompt, run `bcdedit /delete {default}`.

**Answer: A**

**QUESTION 416**

Your laptop has a 400 GB drive and currently reserves, by default, 2% (8 GB) for shadow copies.

You need to reserve more space for previous versions of files.

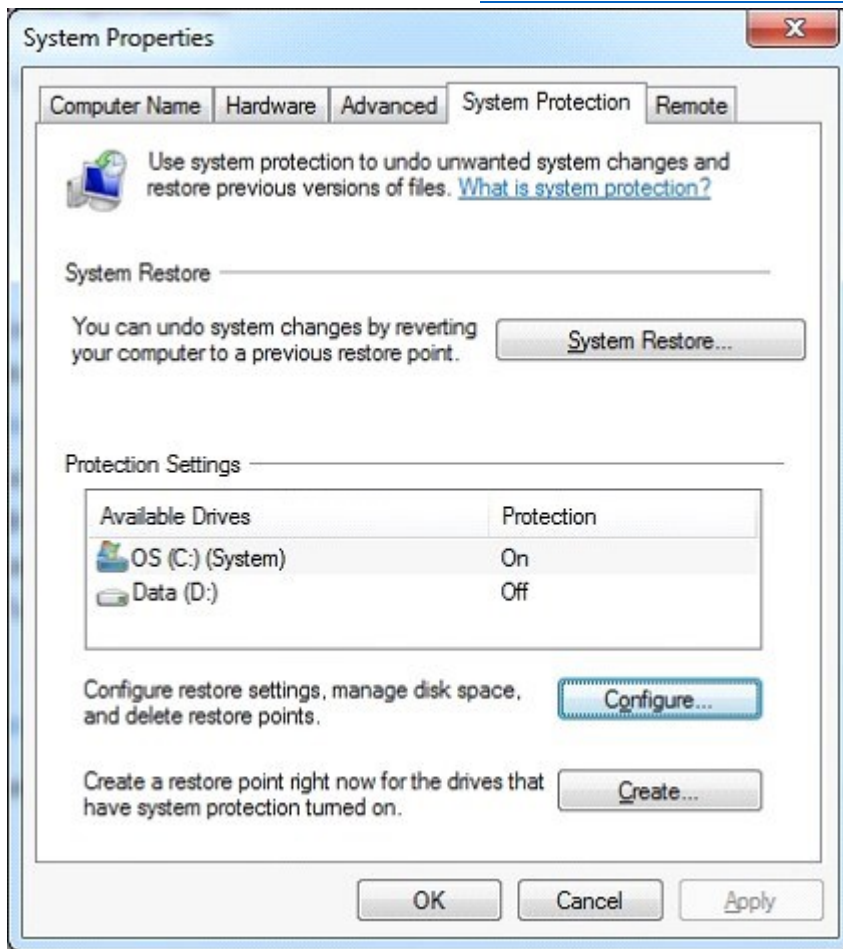
What should you do?

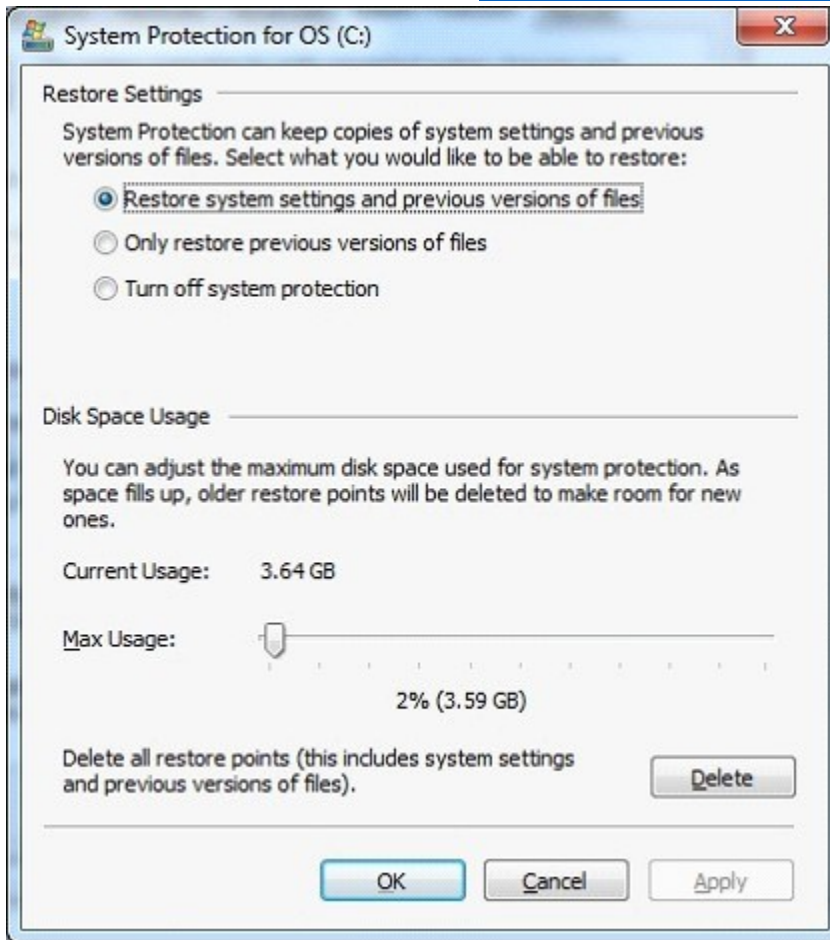
- A. From System Properties, System Protection, expand the Max usage to 20 GB.
- B. From System Properties, System Protection, turn off system protection.
- C. From Disk Properties, change the Quota Settings from 8 GB to 20 GB.
- D. From System Properties, System Protection, set it to only restore previous versions of files.

**Answer: A**

**Explanation:**

Control Panel->System and Security. >System [Properties]->System Protection->Configure





#### QUESTION 417

Drag and Drop Question

You manage the Windows 7 Professional computers for a small architecture firm. All computers operate in workgroup mode.

The lead engineer asks you to enable employees to share CAD files located on their desktop computers with all of the other members of the firm.

You create a HomeGroup on the lead engineer's computer.

You need to configure the rest of the computers in the firm to join this HomeGroup.

Which four actions should you perform in sequence?

(To answer, move the appropriate four actions from the list of actions to the answer area and arrange them in the correct order. 1)

	Answer Area
Provide the HomeGroup password.	
Choose the libraries that you want to share to the HomeGroup.	
Click <b>Join Now</b> in the Control Panel/HomeGroup utility.	
Configure each computer with the same workgroup name.	
Identify the current network connection as a Home location.	

**Answer:**

	Answer Area
Provide the HomeGroup password.	Identify the current network connection as a Home location.
Choose the libraries that you want to share to the HomeGroup.	Click <b>Join Now</b> in the Control Panel/HomeGroup utility.
Click <b>Join Now</b> in the Control Panel/HomeGroup utility.	Choose the libraries that you want to share to the HomeGroup.
Configure each computer with the same workgroup name.	Provide the HomeGroup password.
Identify the current network connection as a Home location.	

**QUESTION 418**

You administer client computers that have Windows 7 Enterprise installed. A server named Server1 has an IP address of 10.10.4.46. The server accepts Remote Desktop connections at a custom port 10876.

You need to connect to the server from a client computer by using Remote Desktop.

What should you do?

- A. From an elevated command prompt, run `mstsc.exe /v:server1:10876`
- B. From an elevated command prompt, run `msts.exe 10.10.4.56 port:10876`
- C. From an elevated command prompt, run `msts.exe Server1 port:10876`
- D. From the Advanced tab of your remote Desktop connection, configure the IP address and port of Server1 as the RD Gateway Server

**Answer: A**

**Explanation:**

<http://windows.microsoft.com/en-us/windows-vista/Use-command-line-parameters-with-Remote-Desktop-Connection>

**QUESTION 419**

You administer computers that have Windows 7 and Internet Explorer 8 installed.

You want to log on to one of the computers and access a web-based management application that runs on a server by using Internet Explorer.

You need to ensure that any data about your browser session is not saved on the computer.

What should you do?

- A. From Internet Options, modify the security settings for the Internet zone.
- B. From the Local Group Policy, enable the InPrivate Filtering Threshold setting.
- C. From Internet Options, select Delete browsing history on exit.
- D. From Internet Options, on the Advanced tab, clear Enable DOM Storage.

**Answer: C**

**QUESTION 420**

Drag and Drop Question

You use a computer that has Windows 7 Enterprise installed.

You install two new hard disk drives and verify that the disks have been detected by Disk Management.

You need to configure the two new disks as a software fault-tolerant disk array.

What should you do?

(To answer, move the appropriate actions from the list of actions to the answer area and arrange them in the correct order.)

	Answer Area
Initialize the disks.	
Import foreign disks.	
Convert disks to GPT disks.	
Convert disks to dynamic disks.	
Create new mirrored volume.	
Create new spanned volume.	

**Answer:**

Answer Area	
Initialize the disks.	Initialize the disks.
Import foreign disks.	Convert disks to dynamic disks.
Convert disks to GPT disks.	Create new mirrored volume.
Convert disks to dynamic disks.	
Create new mirrored volume.	
Create new spanned volume.	

**QUESTION 421**

Drag and Drop Question

Windows 7 client computers in your company network are assigned IP addresses manually or by using DHCP.

Recent changes have been made to a DHCP Server scope. Desktops that have manually assigned IP addresses are reporting that they can no longer connect to the Internet.

You need to ensure that all client computers receive IP address and DNS servers' addresses from the DHCP server.

Which commands should you run?

(To answer, move the appropriate commands from the list of commands to the answer area and arrange them in the correct order.)

Answer Area	
IPconfig /renew	
IPconfig /release	
IPconfig /registerdns	
netsh dhcpclient trace enable	
netsh interface ipv4 set interface "1" routerdiscovery=enable	
netsh interface ipv4 set address "Local Area Connection" source=dhcp	
netsh interface ipv4 set dnsservers "Local Area Connection" source=dhcp	

**Answer:**

Answer Area	
IPconfig /renew	IPconfig /release
IPconfig /release	netsh interface ipv4 set dnsservers "Local Area Connection" source=dhcp
IPconfig /registerdns	IPconfig /renew
netsh dhcpclient trace enable	
netsh interface ipv4 set interface "1" routerdiscovery=enable	
netsh interface ipv4 set address "Local Area Connection" source=dhcp	
netsh interface ipv4 set dnsservers "Local Area Connection" source=dhcp	

**QUESTION 422**

You have a computer that runs a 32-bit version of Windows 7 Home Premium. The computer has a single partition on a single hard disk drive.

You want to test a 64-bit version of Windows 7 Ultimate.

You configure the computer for a dual boot with previously installed Windows 7 Home Premium.

You need to configure the computer to support the dual boot.

What should you do?

- A. Start Windows 7 Home Premium. Create a Virtual Hard Disk (VHD) file to start Windows 7 Ultimate.
- B. Start Windows 7 Home Premium. Add a new entry to the boot menu.
- C. Attach Windows 7 Ultimate media as an ISO image into Windows 7 Home Premium.
- D. Install Virtual PC into Windows 7 Home Premium.

**Answer: A**

**Explanation:**

The Virtual Hard Disk (VHD) format is a publicly-available image format specification that allows encapsulation of the hard disk into an individual file for use by the operating system as a virtual disk in all the same ways physical hard disks are used. These virtual disks are capable of hosting native file systems (NTFS, FAT, exFAT, and UDFS) while supporting standard disk and file operations. VHD API support allows management of the virtual disks. Virtual disks created with the VHD API can function as boot disks.

**QUESTION 423**

You install the Windows Automated Installation Kit (WAIK) for Windows 7 on a computer that runs Windows 7.

You want to deploy a Windows image (WIM) file to other computers in the domain.

You need to capture the operating system, computer configuration, and applications installed on the computer to a WIM file.

What should you do before you capture the image?

- A. Run Defrag.exe.

- B. Run Oscdimg.exe.
- C. Start the computer by using the Windows Preinstallation Environment (WinPE) ram disk.
- D. Run Diskpart.exe.

**Answer: B**

**Explanation:**

Oscdimg is a command-line tool that you can use to create an image (.iso) file of a customized 32-bit or 64-bit version of Windows Preinstallation Environment (Windows PE). You can then burn the .iso file to a CD or DVD. Osdimg supports ISO 9660, Joliet, and Universal Disk Format (UDF) file systems.

Note:

You just created your Windows PE Boot Flash Drive. Now you need to capture a generalized image for deployment.

If you would like to burn WindowsPE to a CD instead of a USB thumb drive. The following command will copy all of the files necessary to create a WindowsPE boot disc into an ISO image file. Then you can burn the image file to a CD to create a bootable WindowsPE CD. In the command below the ISO image file that you will want to burn is winpex86.iso Osdimg -n -bC:\winpe\_x86\Etfsboot.com C:\winpe\_x86\ISO C:\winpe\_x86\winpex86.iso Now burn the ISO image file winpex86.iso to a CD as a bootable image disc and you are finished!

#### **QUESTION 424**

You have a Windows 7 Professional computer that is a member of an Active Directory domain. The domain group policy redirects documents to save to the network-attached storage device mapped to the F: drive.

You want to implement a disaster recovery solution that restores only the local drives to a previous state.

You attach an external drive to the computer locally and assign it to the X: drive.

You need to configure the solution to perform the backup on a weekly basis.

What should you do?

- A. Configure a Windows Backup to include a system image file to back up to the X: drive. Run the X: drive weekly.
- B. Create a batch file that runs the command "ntbackup backup systemstate /J "SystemStateBackup" /F "X: \Backup. bkf". Configure a Scheduled Task to run the command weekly.
- C. Create a batch file that runs the command "wbadmin start backup -backuptarget:x: - included: -quiet". Configure a Scheduled Task to run the command weekly.
- D. Configure a Windows Backup to include a system image file and select the F: drive to back up to the X: drive. Run the F: drive weekly.

**Answer: A**

#### **QUESTION 425**

You have an answer file named Unattend.xml for a Windows 7 automated installation.

You need to perform an unattended installation of Windows 7 by using the answer file.

What should you do?

- A. Name the answer file as unattend.xml and save it to a floppy disk. Start the computer from the Windows Preinstallation Environment (WinPE).
- B. Name the answer file as unattend.xml and save it to a USB disk. Start the computer from the Windows Preinstallation Environment (WinPE).
- C. Name the answer file as autounattend.xml and save it to a floppy disk. Start the computer from the Windows 7 DVD.
- D. Name the answer file as autounattend.ini and save it to a floppy disk.

Start the computer from the Windows 7 DVD.

**Answer: C**

**Explanation:**

Unattended installation

You can perform an unattended installation of Windows 7 by using an installation file called Unattend.xml. These installation files store answers to the questions asked by the Setup Wizard. When the Windows 7 installation process starts, Windows checks for attached USB storage devices that have this file in their root directory. Unattended installations are suitable when you need to deploy Windows 7 to a large number of computers because you do not have to interact with them manually, responding to prompts, as the installation progresses. Building a Reference Installation You configure your reference computer with a customized installation of Windows 7 that you then duplicate onto one or more destination computers. You can create a reference installation by using the Windows product DVD and (optionally) the answer file you created in the previous section. To install your reference computer using an answer file, perform the following procedure:

1. Turn on the reference computer. Insert the Windows 7 product DVD and the UFD containing the answer file (Autounattend.xml) that you created in the previous section. Note that the use of an answer file is optional, although it is the method Microsoft recommends. If you prefer, you can install Windows 7 manually from the installation DVD-ROM.
2. Restart the computer by pressing CTRL+ALT+DEL. You may have to override the boot order to boot from the CD/DVD-ROM disk. If so, select the appropriate function key to override the boot order during initial boot. Windows Setup (Setup.exe) starts automatically and searches the root directory of all removable media for an answer file called Autounattend.xml.
3. After Setup finishes, you can validate that all customizations were applied. For example, if you included the optional Microsoft-Windows-IE-InternetExplorer feature and set the Home\_Page setting in your answer file, you can verify these settings by opening Internet Explorer.
4. To prepare the reference computer for the user, you use the Sysprep utility with the /generalize option to remove hardware-specific information from the Windows installation and the /oobe option to configure the computer to boot to Windows Welcome upon the next restart.

#### **QUESTION 426**

You have two computers named Computer1 and Computer2 that run Windows 7.

You connect from Computer1 to Computer2 by using Remote Desktop.

You discover that you cannot copy any files between the computers during the Remote Desktop session.

You need to ensure that you can copy files between the computers during the Remote Desktop session.

What should you do?

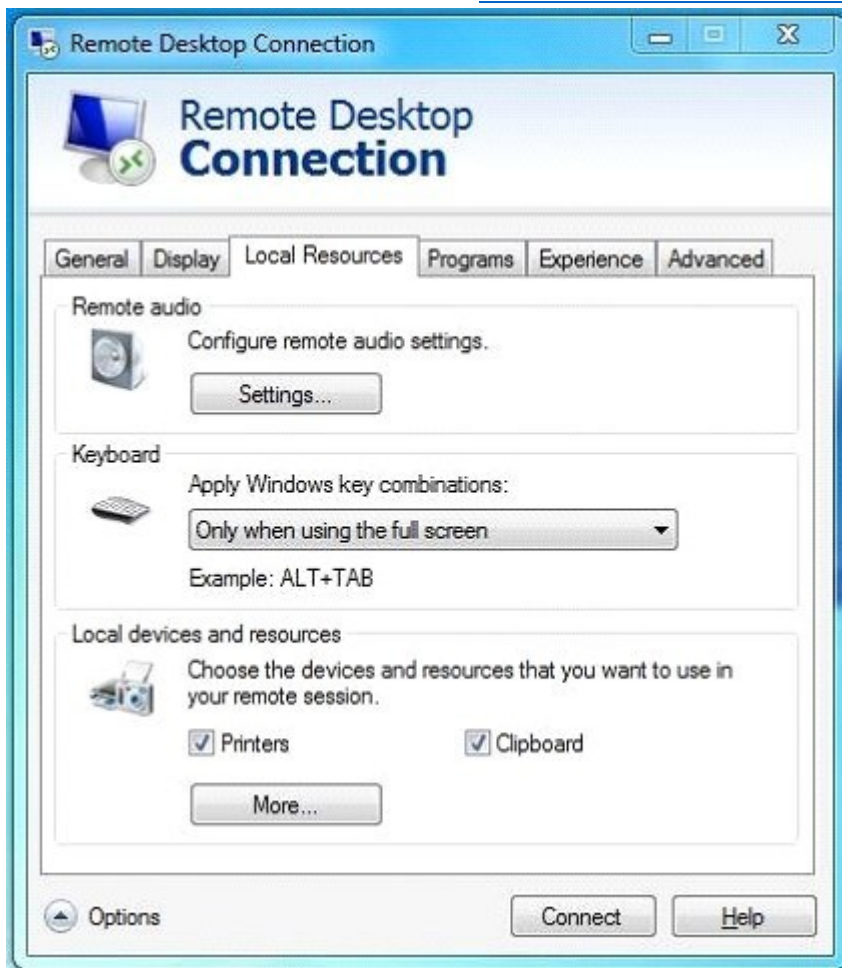
- A. On Computer1, open Windows Firewall and allow file and printer sharing.
- B. On Computer2, open Windows Firewall and allow file and printer sharing.
- C. On Computer1, open Remote Desktop Connection and configure the Local devices and resources setting.
- D. On Computer2, open Remote Desktop Connection and configure the Local devices and resources setting.

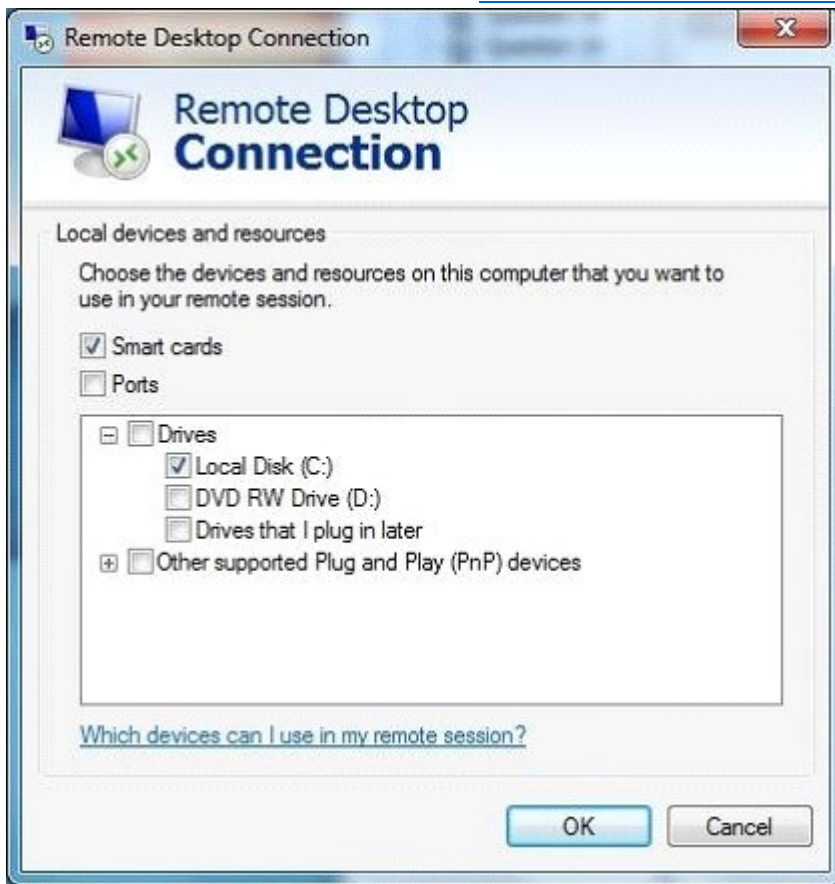
**Answer: C**

**Explanation:**

How can I use my devices and resources in a Remote Desktop session?

Redirecting a device on your computer makes it available for use in a Remote Desktop session. If you have a recent version of Remote Desktop, you can redirect most devices, including printers, smart cards, serial ports, drives, Plug and Play devices, media players based on the Media Transfer Protocol (MTP), and digital cameras based on the Picture Transfer Protocol (PTP). Some USB devices can be redirected, and you can also redirect your Clipboard.





#### QUESTION 427

##### Hotspot Question

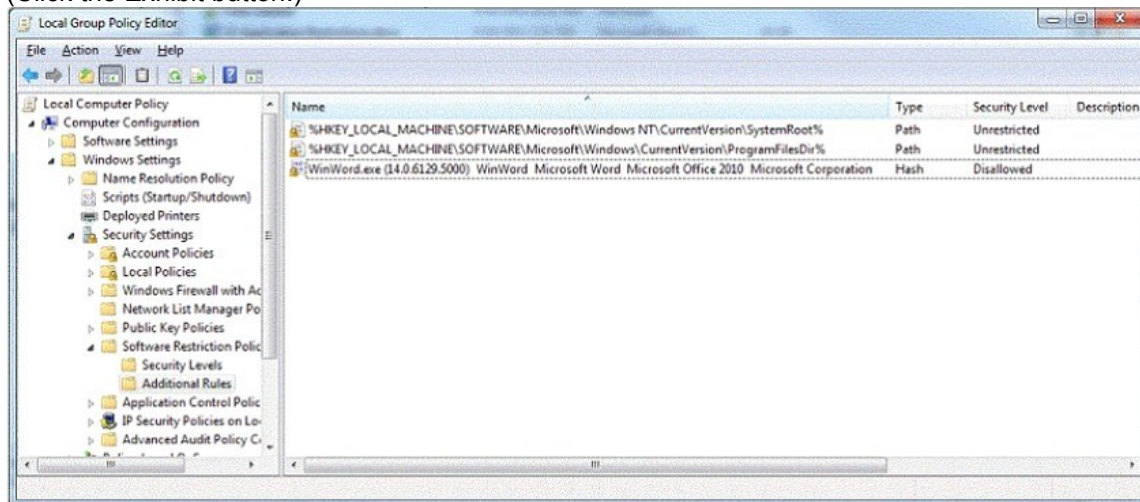
You work with Windows 7 computers.

Your company has a policy of not allowing software to be upgraded without proper authorization from the managers.

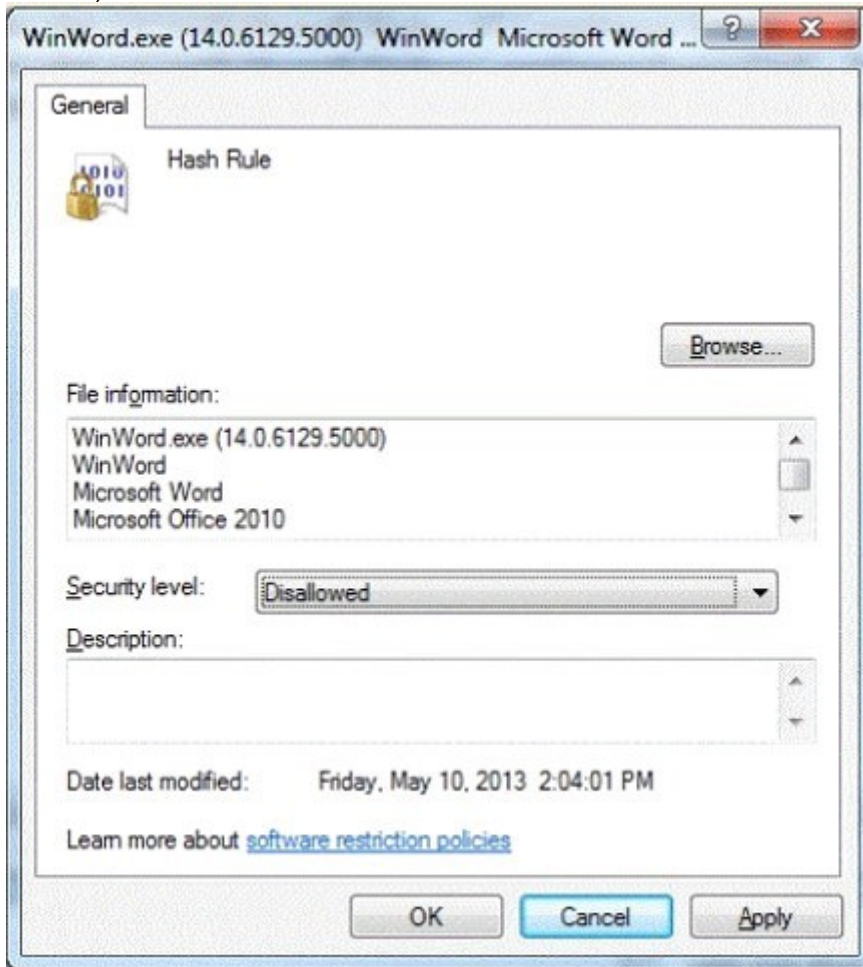
You set a Software Restriction Policy to allow only a certain version of Microsoft Word 2010 to run.

The policy of the Local Group Policy Editor is shown in the Policy Editor exhibit.

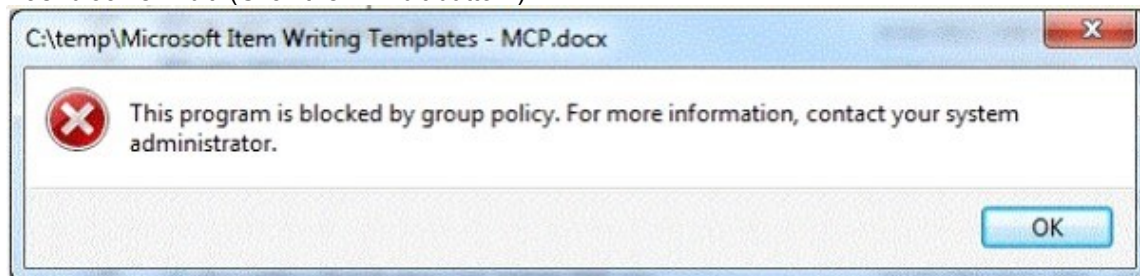
(Click the Exhibit button.)



Additionally, the hash policy for WmWord.exe is shown in the Hash Policy exhibit. (Click the Exhibit button. )



Any upgrades or change to the WinWord.exe will result in the program not operating. When you attempt to run MS Word, the program does not execute. The error is shown in the Hashblock exhibit. (Click the Exhibit button.)



Consider each of the following statements. Does the information in the three statements support the inference as stated? (This question is worth three points. )

Answer Area

Yes No

☐ ☐ You should set a path rule instead of a hash rule.

☐ ☐ You should set the Security Level of the hash rule to Unrestricted.

**Answer:**

Answer Area

Yes No

☐ ☒ You should set a path rule instead of a hash rule.

☒ ☐ You should set the Security Level of the hash rule to Unrestricted.

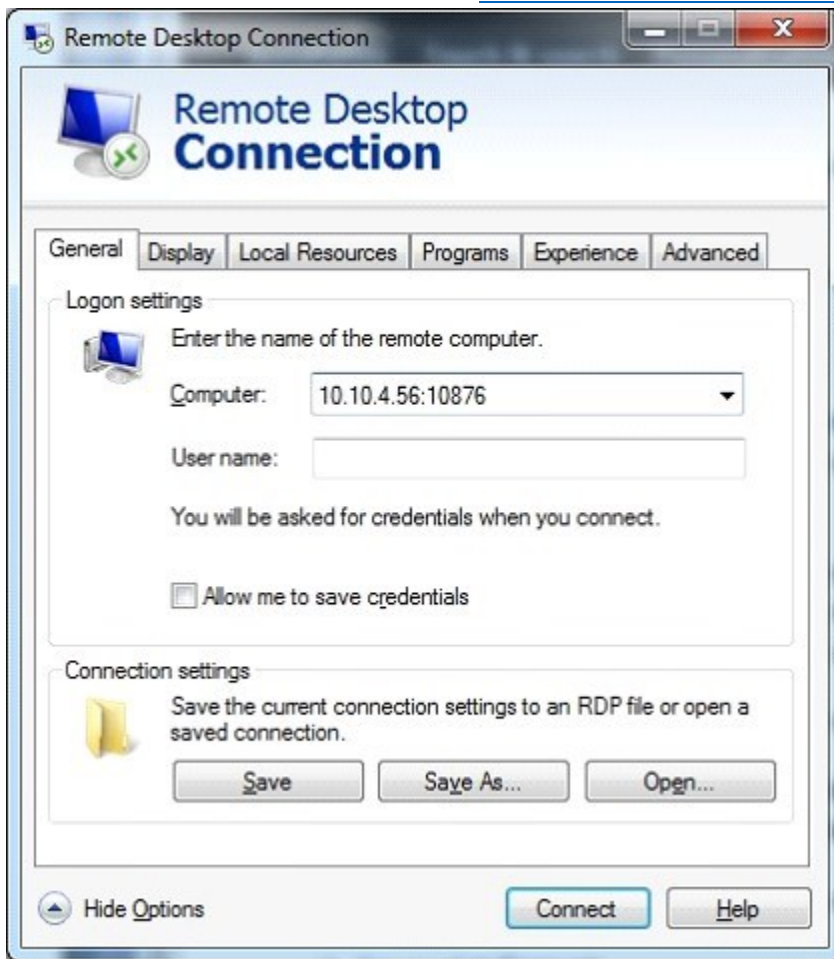
**QUESTION 428**

You administer client computers that have Windows 7 Enterprise installed.  
A server named Server1 has an IP address of 10.10.4.56. The server accepts Remote Desktop connections at a custom port 10876.  
You need to connect to the server from a client computer by using Remote Desktop.  
What should you do?

- A. From an elevated command prompt, run `mstsc.exe 10.10.4.56 port: 10876`.
- B. From the Advanced tab of your Remote Desktop connection, configure the port of Server1 in the Connect from anywhere option.
- C. From the General tab of your Remote Desktop connection, type 10.10.4.56:10876 in the Computer field.
- D. From the Advanced tab of your Remote Desktop connection, configure the IP address and port of Server1 as the RD Gateway Server.

**Answer: C**

**Explanation:**



Note:

\* mstsc.exe allows you to initiate terminal services commands via the command line, and forms an important part of this additional Windows service.

Incorrect:

Not A: Incorrect syntax.

### QUESTION 429

Hotspot Question

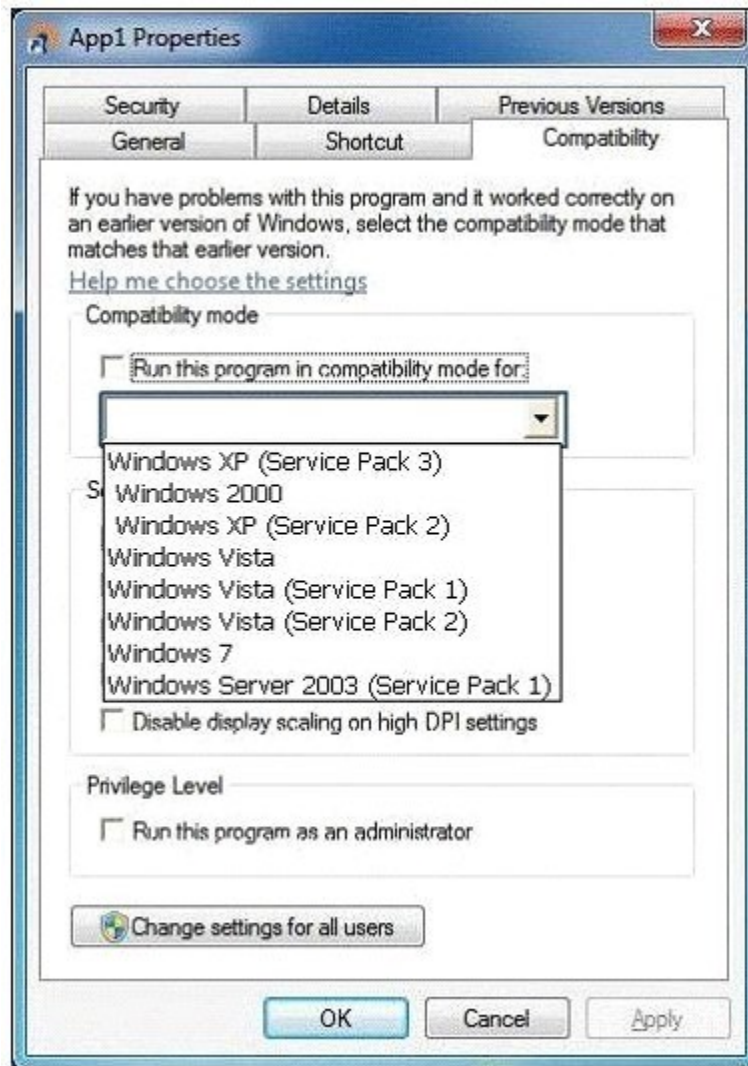
You use a computer that has Windows 7 and a legacy application named App1 installed.

App1 is designed for Windows 2000 and implements large-scale font sizes.

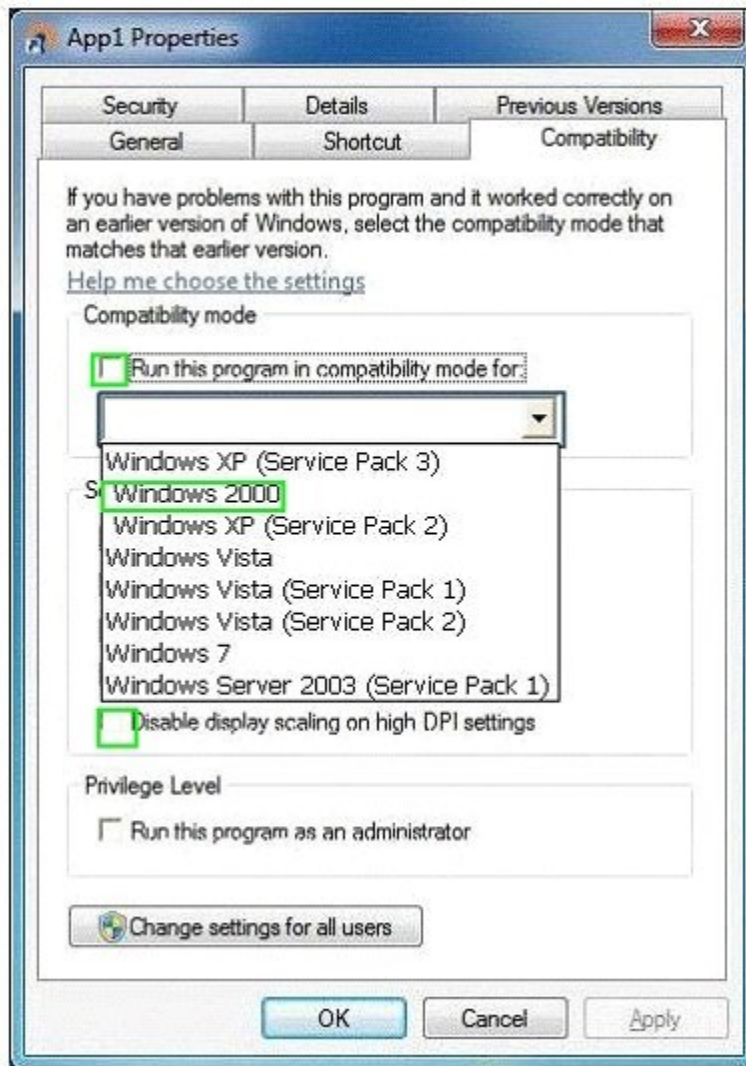
You need to configure application compatibility settings for App1 according to the following requirements:

- Compatible with Windows 2000
- Large-scale fonts must not be resized

What should you do? (To answer, select the appropriate check boxes in the Application "App1" Compatibility Properties tab in the answer area.)



**Answer:**



**QUESTION 430**

You administer client computers that have Windows 7 Professional SP1 64-bit installed. All desktops are members of a single Active Directory domain. You plan to install a driver manufactured by an unknown provider. You need to prepare the client computers for the driver installation. What should you do?

- A. Disable the Code signing for device drivers Domain Group Policy setting.
- B. Add each user to the Domain Administrators group.
- C. Run the SigVerif.exe command.
- D. Enable the Code signing for device drivers Domain Group Policy setting.

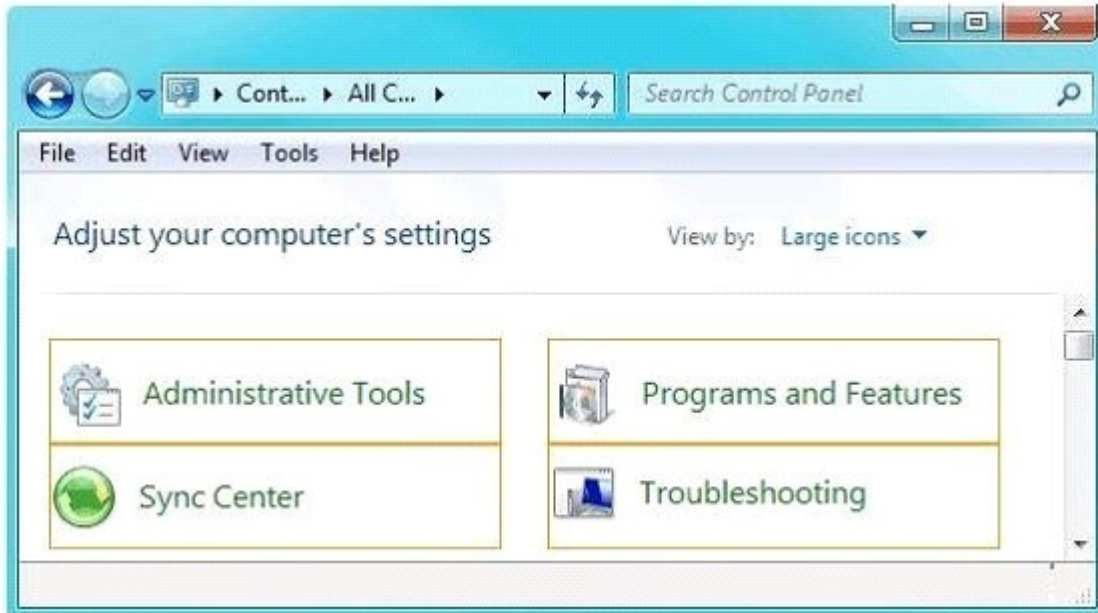
**Answer: A**

**QUESTION 431**

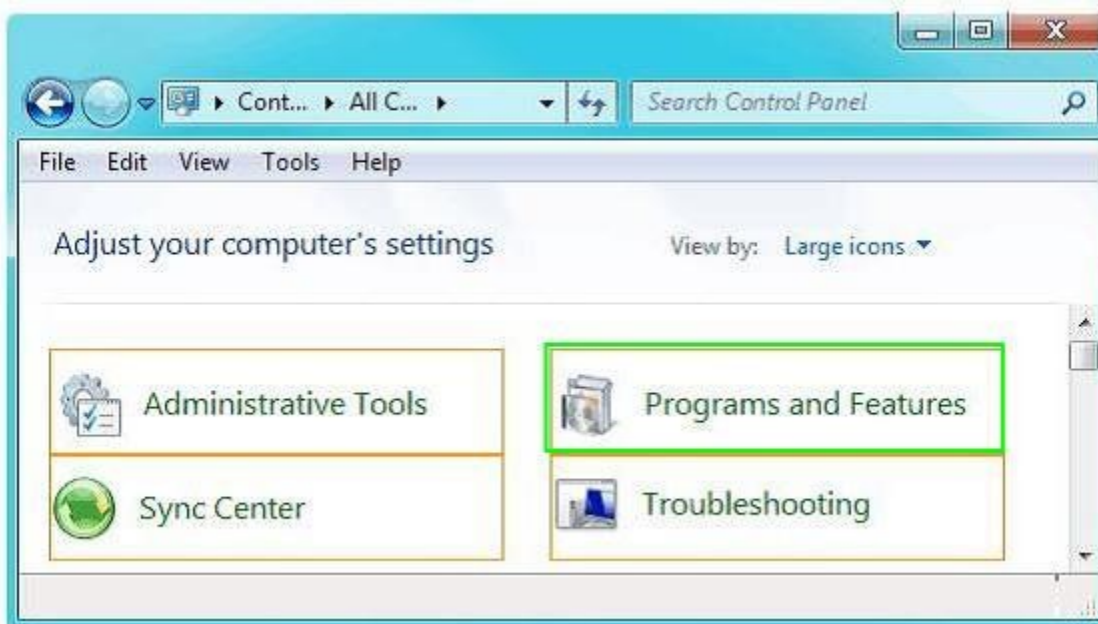
Hotspot Question

You need to uninstall a Windows update from a computer that runs Windows 7. Which Control Panel item should you use?

(To answer, select the appropriate item in the Control Panel in the answer area.)



**Answer:**



**QUESTION 432**

You manage several client computers in an organization.

You need to ensure that all users, including administrators, are required to enter a username and password when uninstalling applications from any computer in the organization.

What should you do?

- A. Create a custom GPO to modify the User Account Control: Behavior of the elevation prompt for administrators in Admin Approval Mode setting.
- B. Configure an AppLocker Windows Installer rule.

- C. Configure the User Account Control (UAC) settings on all client computers to always notify.
- D. Create a custom GPO to configure a software restriction policy.

**Answer: A**

**QUESTION 433**

You are a network administrator for a global company that has Windows Server 2008 R2 servers and Windows 7 Enterprise computers.

Management wants to decrease VPN costs by implementing DirectAccess for remote network access.

They assign you to evaluate the current network infrastructure, which includes the following elements:

- Active Directory
- IPv6 network and applications
- Server for DirectAccess service

You need to ensure that all critical infrastructure components are present.

What should you add to the infrastructure?

- A. Windows Internet Name Service (WINS) server
- B. Public key infrastructure
- C. NAT-PT devices
- D. Windows Software Update Services (WSUS) server

**Answer: B**

**Explanation:**

DirectAccess With Windows Server 2008 R2 requires:

- \* Public key infrastructure (PKI) to issue computer certificates.
- \* One or more DirectAccess servers running Windows Server 2008 R2 with two network adapters: one that is connected directly to the Internet, and a second that is connected to the intranet.
- \* On the DirectAccess server, at least two consecutive, public IPv4 addresses assigned to the network adapter that is connected to the Internet.
- \* DirectAccess clients running Windows 7 or Windows 8 "Enterprise" edition clients
- \* At least one domain controller and Domain Name System (DNS) server running Windows Server 2008 SP2 or Windows Server 2008 R2.

**QUESTION 434**

A company has Windows 7 Enterprise computers that use BitLocker drive encryption on operating system drives.

You need to configure multi-factor authentication before client computers are booted into Windows. On each client computer, what should you do?

- A. Configure a TPM PIN.
- B. Implement fingerprint authentication.
- C. Implement a Dynamic Access Control policy.
- D. Install a standalone certification authority server.

**Answer: A**

**Explanation:**

BitLocker supports multifactor authentication for operating system drives. If you enable BitLocker on a computer that has a TPM version 1.2, you can use additional forms of authentication with the TPM protection. BitLocker offers the option to lock the normal boot process until the user supplies a personal identification number (PIN) or inserts a USB device (such as a flash drive) that contains

a BitLocker startup key, or both the PIN and the USB device can be required. These additional security measures provide multifactor authentication and help ensure that the computer will not start or resume from hibernation until the correct authentication method is presented.

**QUESTION 435**

Drag and Drop Question

An employee has a Windows Vista SP1 32-bit computer that uses legacy devices.

You need to upgrade the computer to Windows 7 32-bit based on the following requirements:

- Ensure application and third-party hardware compatibility.
- Preserve existing applications, settings, and documents.

Which three actions should you perform in sequence?

(To answer, move the appropriate three actions from the list of actions to the answer area and arrange them in the correct order. )

	Answer Area
Run the Windows 7 Upgrade Advisor tool.	
Install Vista Service Pack 2.	
Update the drivers.	
Run the Windows 7 Easy Transfer tool.	
Perform an Upgrade installation of Windows 7.	

**Answer:**

	Answer Area
Run the Windows 7 Upgrade Advisor tool.	Install Vista Service Pack 2.
Install Vista Service Pack 2.	Run the Windows 7 Upgrade Advisor tool.
Update the drivers.	
Run the Windows 7 Easy Transfer tool.	Perform an Upgrade installation of Windows 7.
Perform an Upgrade installation of Windows 7.	

**QUESTION 436**

Drag and Drop Question

You deploy Windows 7 on client computers by using a default Windows 7 DVD.

You discover that the client computers use the most recently released critical updates.

You download the updates' package files from the Microsoft site to your desktop.

You need to prepare a new installation DVD that includes the updates.

What should you do?

(To answer, move the appropriate actions from the list of actions to the answer area and arrange them in the correct order.)

	Answer Area
Burn a new DVD.	
Mount the install.wim file.	
Use the DISM tool to update the image.	
Install updates on the new target computer.	
Use the DISM tool to update the target computer.	
Commit changes and unmount the install.wim file.	
Copy the install.wim file from the original DVD to your desktop.	
Install a new system from the install.wim file on a new target desktop.	

**Answer:**

	Answer Area
Burn a new DVD.	Copy the install.wim file from the original DVD to your desktop.
Mount the install.wim file.	Mount the install.wim file.
Use the DISM tool to update the image.	Use the DISM tool to update the target computer.
Install updates on the new target computer.	Commit changes and unmount the install.wim file.
Use the DISM tool to update the target computer.	Burn a new DVD.
Commit changes and unmount the install.wim file.	
Copy the install.wim file from the original DVD to your desktop.	
Install a new system from the install.wim file on a new target desktop.	

**QUESTION 437**

Drag and Drop Question

A company has client computers that run Windows XP. The company plans to deploy Windows 7 to all client computers. Each employee will keep the same computer.

You need to migrate the client computers from Windows XP to Windows 7 while maintaining each user's files and settings.

Which actions would you perform in sequence?

(To answer, move the appropriate actions from the list of actions to the answer area and arrange them into the correct order).

Install Windows 7.	
Apply data by using the LoadState tool.	
Gather data by using the ScanState tool.	
Gather data by using the Windows 7 Upgrade Advisor.	
Gather and apply data by using Windows Backup and Restore.	
Gather and apply data by using the Files and Transfer Settings Wizard.	

**Answer:**

Install Windows 7.	Gather data by using the ScanState tool.
Apply data by using the LoadState tool.	Install Windows 7.
Gather data by using the ScanState tool.	Apply data by using the LoadState tool.
Gather data by using the Windows 7 Upgrade Advisor.	
Gather and apply data by using Windows Backup and Restore.	
Gather and apply data by using the Files and Transfer Settings Wizard.	

#### QUESTION 438

You administer a computer that has Windows 7 Enterprise installed.

The computer reboots unexpectedly.

You suspect that an unsigned driver causes the reboots.

You need to view a list of all installed device drivers that contain information about the digital signature of the device driver.

Which should you do?

- A. Run the driverquery.exe /SI command.
- B. Open the System Protection configuration for drive
- C. Open Device Manager, show hidden devices, and sort all devices by type.
- D. Run sigverif.exe and start the verification process of the device drivers.  
Then, review the generated log file.

**Answer: A**

#### QUESTION 439

You have a computer joined to a domain that runs Windows 7.

Your company network contains a Windows Server 2008 R2 remote access server. The server is configured as a Network Access Protection (NAP) enforcement point.

You set the startup type of the NAP Agent service to Automatic on the computer.

You need to complete the configuration of the computer as a NAP client.

What should you do?

- A. From the command line of the computer, enable the DHCP Quarantine Enforcement Client by using the netsh command.
- B. From the command line of the computer, enable the DHCP Quarantine Enforcement Client by using the ipconfig command.
- C. From the NAP Client Configuration console, configure the user interface settings.
- D. From the NAP Client Configuration console, configure the Health Registration settings.

**Answer: A**

**QUESTION 440**

You have 20 client computers. The computers run Windows XP. The computers are joined to a domain.

You plan to perform installation of Windows 7 on the computers.

You need to transfer all users' documents and settings.

You must exclude music and video files.

You need to use the minimum amount of administration effort.

What should you do first?

- A. Create a config.xml file.  
Configure a logon script for windows XP computers to launch Windows 7 installations.
- B. Modify the migapp.xml file.  
Configure a logon script for the Windows XP computer to launch Windows 7 installation.
- C. Modify the miguser.xml file.  
Configure a logon script for the Windows XP computer to launch Windows 7 installation.
- D. Modify the migdocs.xml file.  
Configure a logon script for the Windows XP computer to launch Windows 7 installation.

**Answer: D**

**QUESTION 441**

Drag and Drop Question

You have a Windows XP computer.

You need to migrate to Windows 7 and determine that all third-party applications installed on the computer continue to operate with the new operating system.

Which four actions should you perform in sequence?

(To answer, move the appropriate four actions from the list of actions to the answer area and arrange them in the correct order. )

	Answer Area
Reinstall the applications.	
Run Windows 7 Upgrade Advisor.	
Install Windows 7.	
Upgrade to Windows 7.	
Migrate files with Windows Easy Transfer.	

**Answer:**

Answer Area	
Reinstall the applications.	Run Windows 7 Upgrade Advisor.
Run Windows 7 Upgrade Advisor.	Migrate files with Windows Easy Transfer.
Install Windows 7.	Install Windows 7.
Upgrade to Windows 7.	Reinstall the applications.
Migrate files with Windows Easy Transfer.	

**QUESTION 442**

Hotspot Question

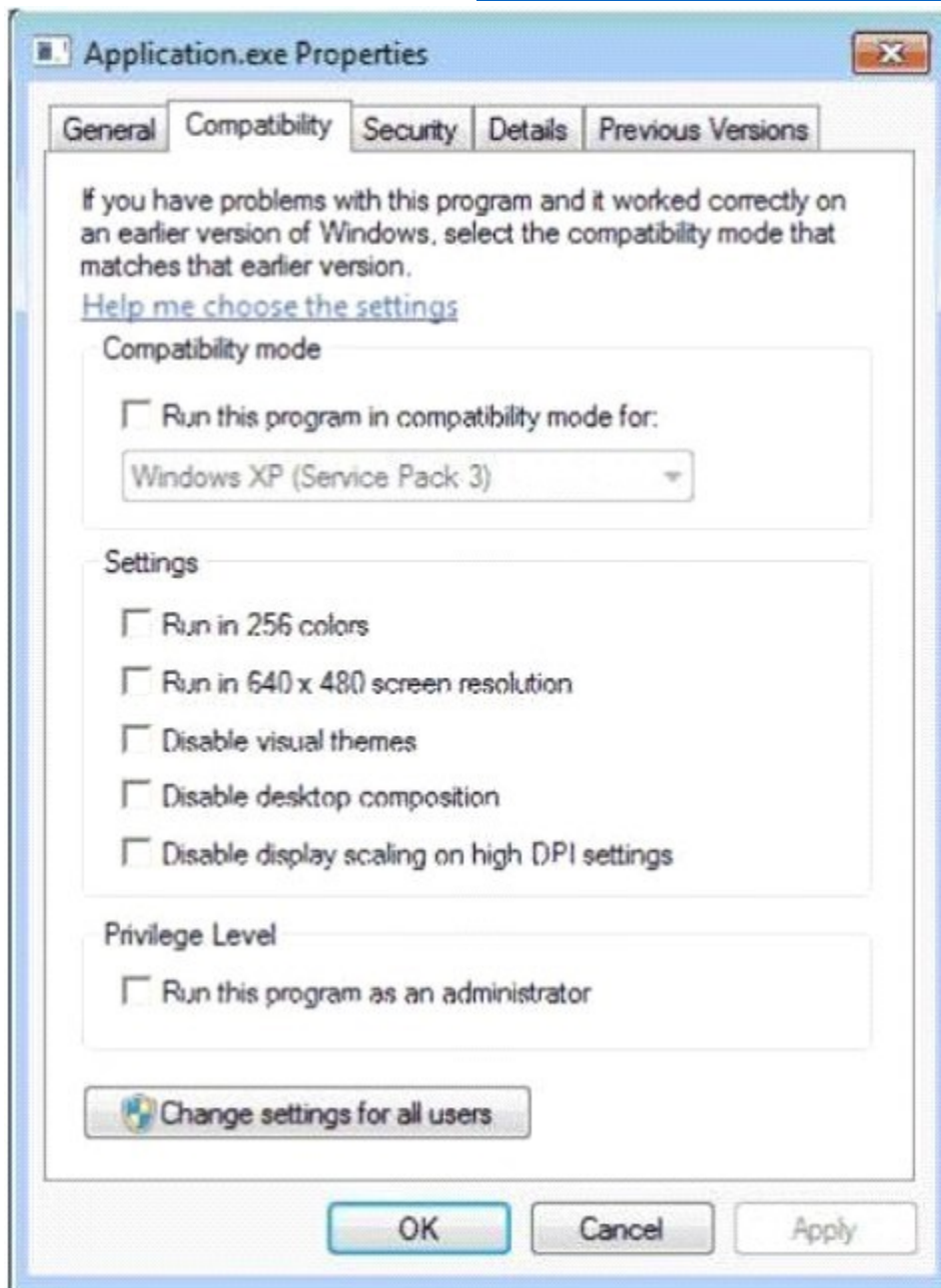
A company is in the process of upgrading its client computers from Windows XP to Windows 7. You add an application to the Windows 7 base image.

When users move the application window, the application is displayed improperly.

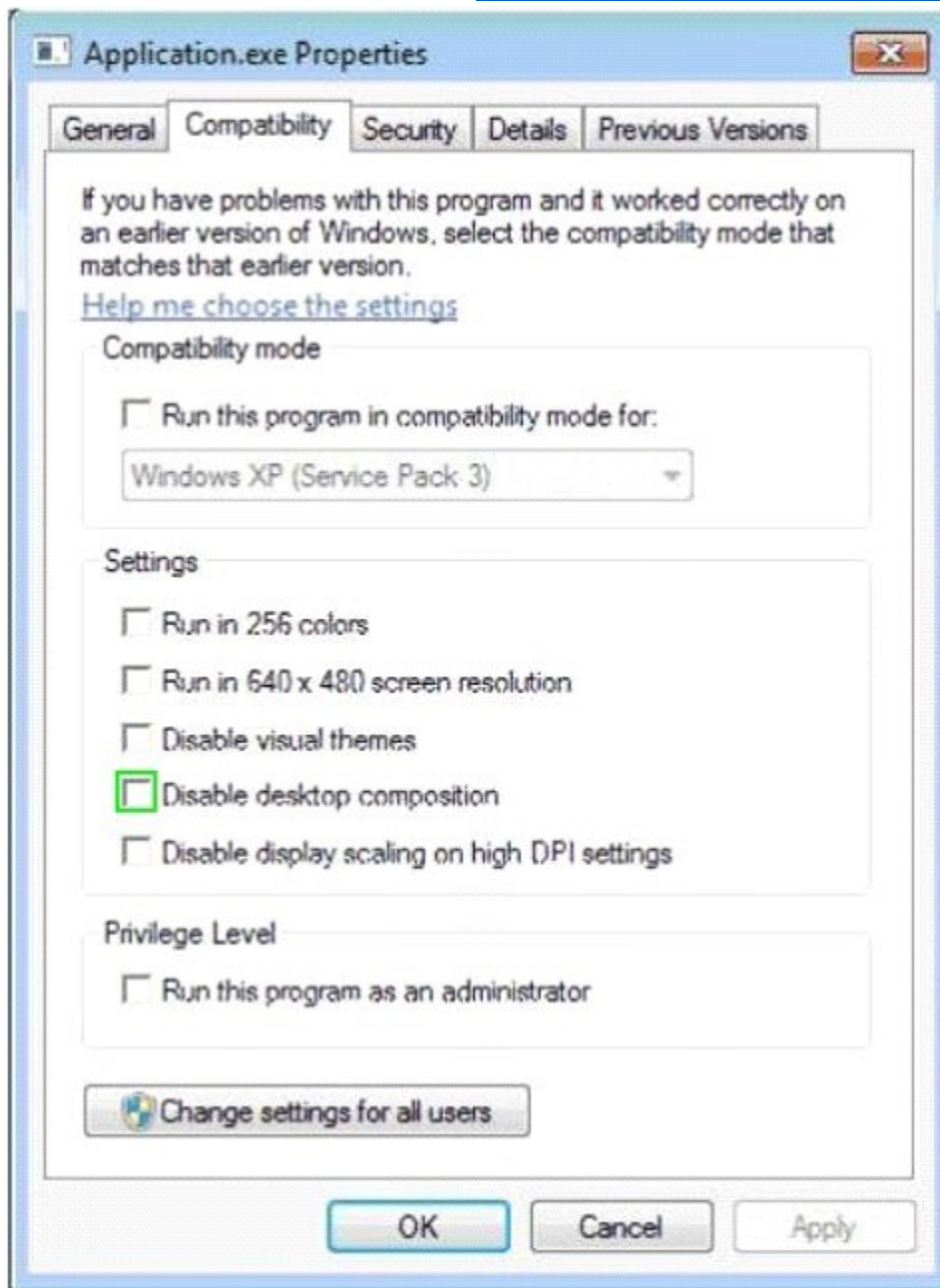
You need to ensure that the application is displayed properly by disabling the Aero theme.

Which setting should you choose?

(To answer, select the appropriate check box in the dialog box.)



**Answer:**



**QUESTION 443**

You maintain Windows 7 virtual hard disks (VHDs) at Contoso, Ltd. You are applying a series of updates to one of the company's VHDs by using the Windows Deployment Image Servicing and Management (DISM) system. The VHD contains a Windows 7 64-bit operating system. The image is stored in N:\Images\Win7img.vhd. Additionally, there are three updates required, which are stored in subfolders of N:\updates. You need to mount and apply Windows updates to the offline VHD. Which two actions should you perform? (Each correct answer presents part of the solution. Choose two. )

A. Use diskpart to mount the VHD.

- B. Use Dism with /Add-Driver and /recurse options.
- C. Use Dism to mount the VHD.
- D. Use Dism with /Add-Package /recurse.

**Answer: AD**

**Explanation:**

A: To Attach a VHD

Diskpart

Select vdisk file=c:\wims\W7Ultimate.vhd

attach vdisk

assign letter=F

exit

D: Example:

Dism /image:C:\WIM\offline /Add-Package /PackagePath:C:\Updates\

Incorrect:

not B: we are not adding drivers.

#### **QUESTION 444**

You are the system administrator for a large manufacturing company.

You and your team are responsible for managing over 1,000 Windows 7 Professional desktop and laptop computers. All computers are members of a Windows 2008 R2 Active Directory domain.

You want to utilize the Windows Remote Management Service available in Windows 7 Professional.

You plan to configure all desktop and laptop computers so that the Windows Remote Management Service can manage them remotely.

You need to run a command on each Windows 7 computer so that you can configure the service.

Which two commands can you use to achieve this goal?

(Each correct answer presents a complete solution. Choose two. )

- A. Mstsc /v:computername configure
- B. Enable-PSRemoting -force
- C. Psexec Wcomputername -enable
- D. Winrm quickconfig

**Answer: BD**

**Explanation:**

B: To configure Windows PowerShell for remoting, type the following command:

Enable-PSRemoting -force

D:

\*When you are working with computers in workgroups or homegroups, you must either use HTTPS as the transport or add the remote machine to the TrustedHosts configuration settings. If you cannot connect to a remote host, verify that the service on the remote host is running and is accepting requests by running the following command on the remote host:

winrm quickconfig

This command analyzes and configures the WinRM service.

\* The Windows PowerShell remoting features are supported by the WS-Management protocol and the Windows Remote Management (WinRM) service that implements WS- Management in Windows.

Incorrect:

Not C:

\* PsExec is a light-weight telnet-replacement that lets you execute processes on other systems, complete with full interactivity for console applications, without having to manually install client software. PsExec's most powerful uses include launching interactive command-prompts on remote systems and remote-enabling tools like IpConfig that otherwise do not have the ability to show

information about remote systems.

```
* psexec [\computer[,computer2[,...]] | @file][[-u user [-p psswd][[-n s][[-r servicename][[-h][- l][[-s|-e][[-x][[-i session]][-c [-f|-v]][[-w directory][[-d][[-a n,n,...]] cmd [arguments]
```

#### QUESTION 445

Hotspot Question

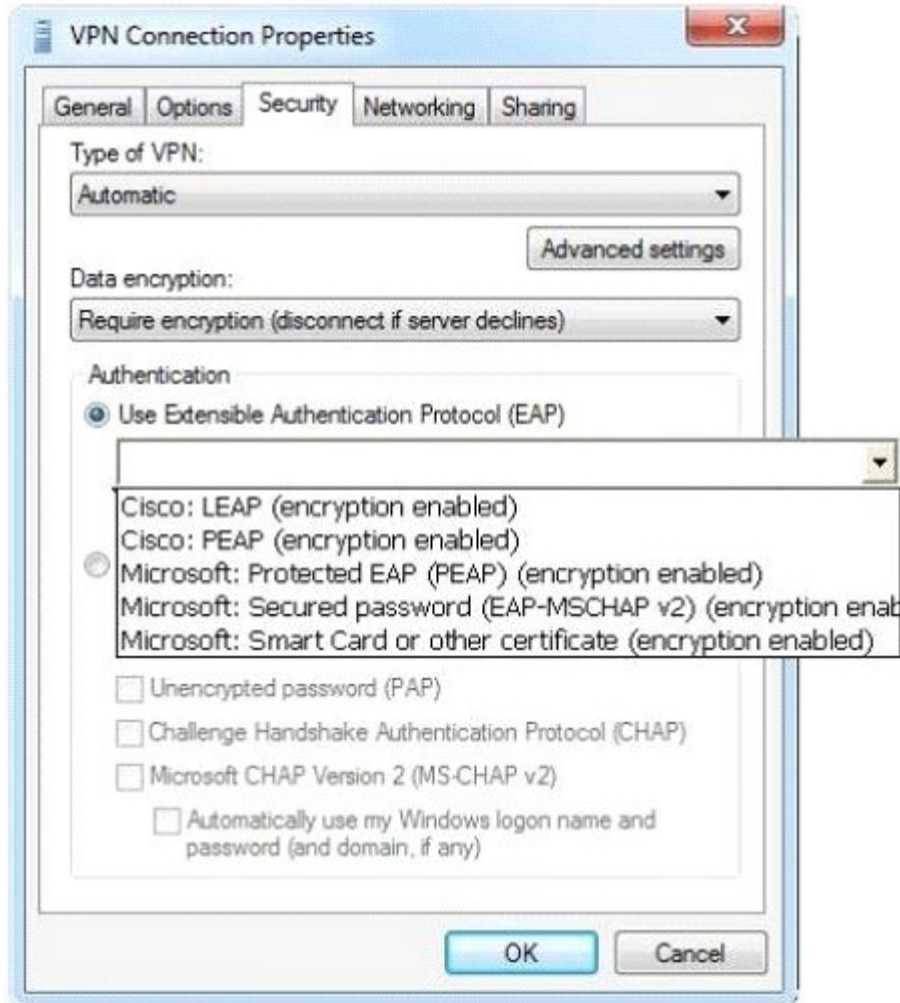
A company has client computers that run Windows 7.

You need to secure a virtual private network (VPN) connection on the client computers.

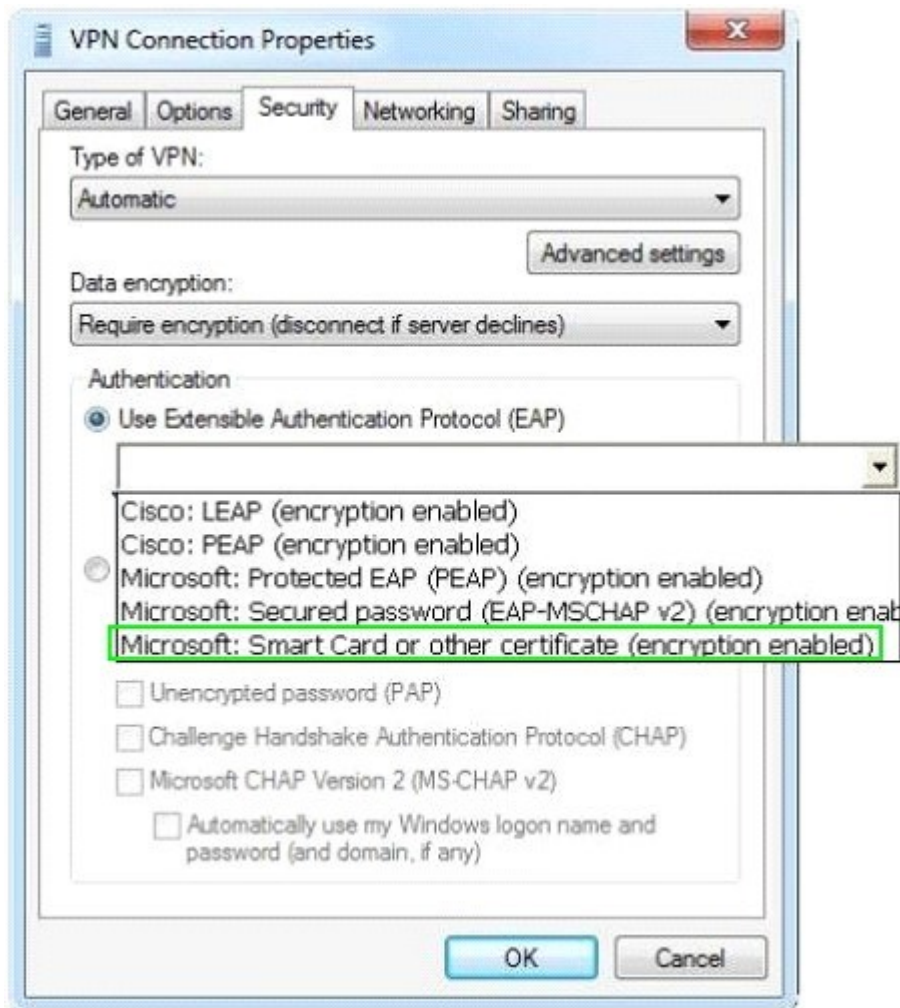
The remote access server must verify the identity of the client computers without requiring user credentials.

Which authentication protocol should you use?

(To answer, select the appropriate setting or settings in the work area.)



**Answer:**



#### QUESTION 446

##### Hotspot Question

A manufacturing company has Windows Vista and Windows XP computers.

You are responsible for upgrading all computers to Windows 7.

You test the Windows 7 installation on a Windows Vista computer. Early in the installation process, you are prompted to choose the "Upgrade" option or the "Custom (Advanced)" installation option. You need to determine which installation option is appropriate for the different computers in your company.

In the table below, identify the characteristics of the Upgrade and Custom installation options. (Make only one selection in each column. This question is worth two points. )

Answer Area

Upgrade	Custom	Installation characteristics
<input type="radio"/>	<input type="radio"/>	Performs a clean installation
<input type="radio"/>	<input type="radio"/>	Preserves files
<input type="radio"/>	<input type="radio"/>	Applies compatibility settings to programs
<input type="radio"/>	<input type="radio"/>	Upgrades programs

**Answer:**

Answer Area

Upgrade	Custom	Installation characteristics
<input type="radio"/>	<input checked="" type="radio"/>	Performs a clean installation
<input checked="" type="radio"/>	<input type="radio"/>	Preserves files
<input checked="" type="radio"/>	<input type="radio"/>	Applies compatibility settings to programs
<input checked="" type="radio"/>	<input type="radio"/>	Upgrades programs

**QUESTION 447**

Drag and Drop Question

You use a computer that has Windows 7 Professional SP1 installed. The computer has a single network interface.

You need to prevent the computer from using NetBIOS applications.

What should you do?

(To answer, move the appropriate actions from the list of actions to the answer area and arrange them in the correct order.)

	Answer Area
Disable NetBIOS over TCP/IP support.	
Disable LMHOSTS look up in the WINS settings.	
Disable Windows Firewall for all network profiles.	
Open Windows Firewall from Control Panel.	
Open advanced settings of the Internet Protocol Version 4 (TCP/IP v4) protocol.	
Open the Internet Protocol Version 4 (TCP/IP) protocol from the network interface.	
Add a new isolation connection security rule.	
Unbind the File and Printer Sharing for Microsoft Networks protocol from the network interface.	

**Answer:**

	Answer Area
Disable NetBIOS over TCP/IP support.	Open the Internet Protocol Version 4 (TCP/IP) protocol from the network interface.
Disable LMHOSTS look up in the WINS settings.	
Disable Windows Firewall for all network profiles.	Open advanced settings of the Internet Protocol Version 4 (TCP/IP v4) protocol.
Open Windows Firewall from Control Panel.	
Open advanced settings of the Internet Protocol Version 4 (TCP/IP v4) protocol.	
Open the Internet Protocol Version 4 (TCP/IP) protocol from the network interface.	Disable NetBIOS over TCP/IP support.
Add a new isolation connection security rule.	
Unbind the File and Printer Sharing for Microsoft Networks protocol from the network interface.	

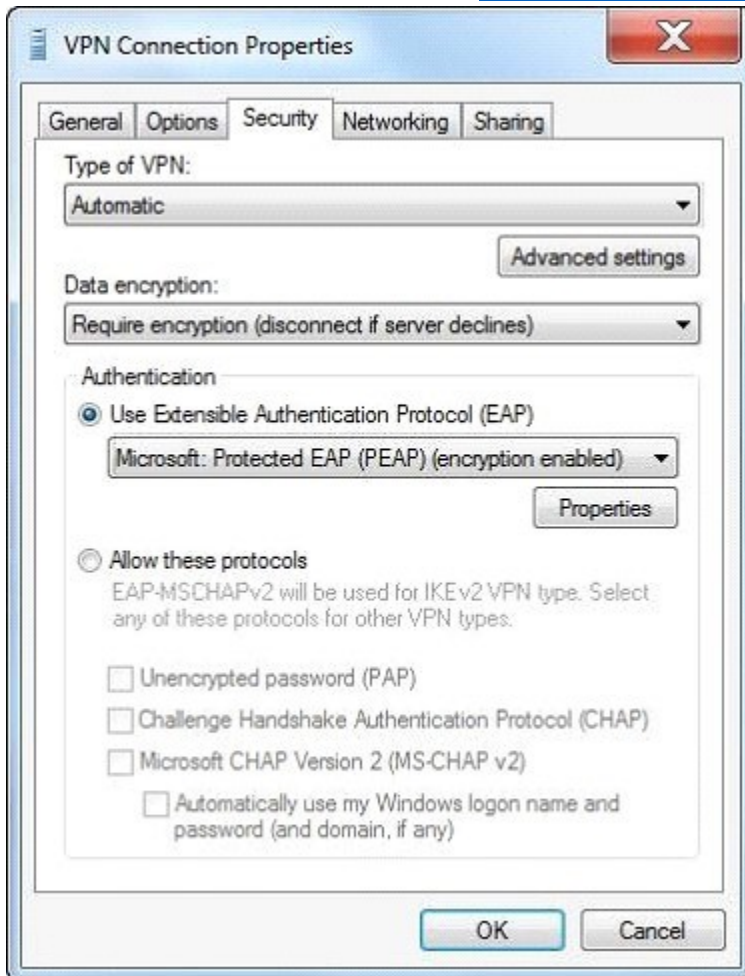
**QUESTION 448**

Hotspot Question

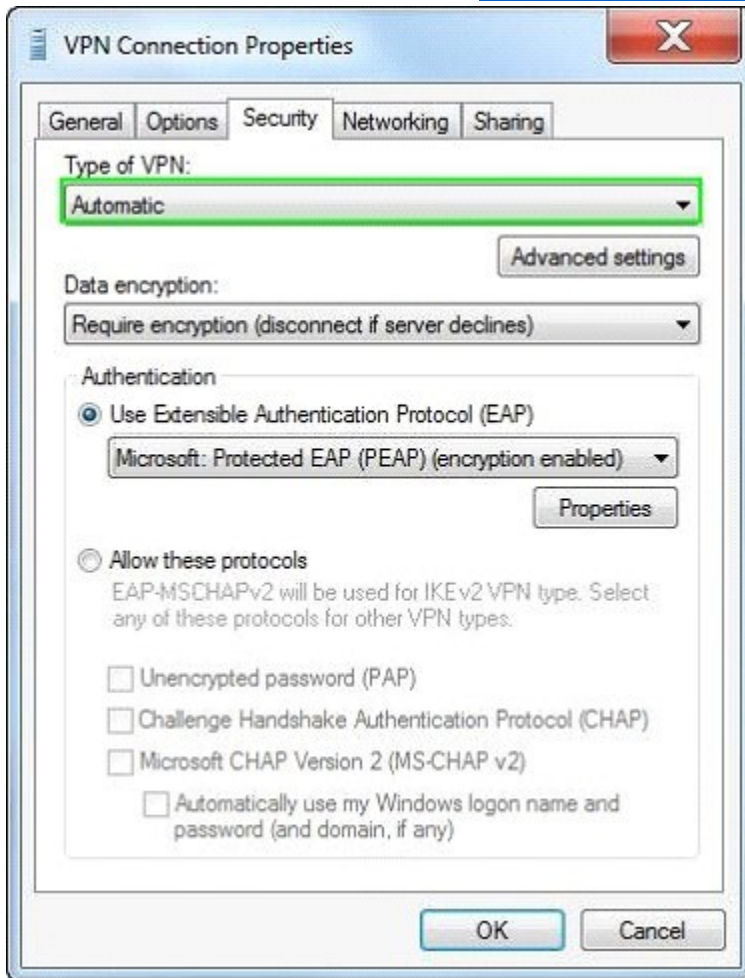
You have a computer running Windows 7 Enterprise.

You need to set up a VPN connection using PPP protocol over SSL (Secure Socket Layer) using HTTPS channel.

What type of VPN connection would you need?



**Answer:**



**QUESTION 449**

A company has client computers that run Windows 7 Enterprise. You need to ensure that Windows does not display notifications when programs try to install software or make changes to the computer, or if users make changes to Windows settings. Which two choices should you use to achieve this goal? (Each correct answer presents a complete solution. Choose two.)

- A. the leads command
- B. the netsh command
- C. share permissions
- D. Device Manager
- E. Local Users and Groups
- F. the folder Properties window
- G. the Services management console
- H. the Group Policy management console
- I. the User Account Control Settings Control Panel window

**Answer: HI**

**QUESTION 450**

You use a portable computer that has Windows 7 Ultimate installed. The computer has a single 1-

terabyte local drive C. 400 GB of the drive space is used by Windows and your documents libraries. You configure a backup task by using default settings to back up data to an empty 500-GB external USB drive. After two hours, the backup task stops, indicating that no free space is available on the USB drive.

You need to be able to back up your libraries to the USB drive.

You reformat a partition on the USB drive.

What should you do next?

- A. Exclude the system image from the backup.
- B. Enable the NTFS file system compression on the USB drive,
- C. Enable the NTFS file system compression on drive C.
- D. Exclude folders located on remote computers from your libraries.

**Answer: A**

[Visit PassLeader and Download Full Version 70-680 Exam Dumps](#)