

➤ **Vendor: Citrix**

➤ **Exam Code: 1Y0-201**

➤ **Exam Name: Managing Citrix XenDesktop 7.6 Solutions**

➤ **Question 41 -- Question 60**

[Visit PassLeader and Download Full Version 1Y0-201 Exam Dumps](#)

QUESTION 41

Scenario: A Citrix Administrator needs to set up an alert on a service that is important for Desktop OS machine performance. The infrastructure includes 3000 Desktop OS machines and two Provisioning Services servers.

Which service on the Provisioning Services server should the administrator monitor?

- A. TFTP
- B. BootP
- C. Stream
- D. Two-Stage Boot

Answer: C

QUESTION 42

Which tool could a Citrix Administrator use to generate a graphical performance report of memory for the last two quarters?

- A. XenCenter
- B. Citrix Studio
- C. Citrix Director
- D. XenServer tools
- E. Provisioning Services Console

Answer: A

QUESTION 43

Scenario: A line of business application has been deployed as a hosted server application in XenDesktop. The deadline for a critical project is quickly approaching. Users report that the application is slower than usual. The Server OS machines are non-persistent.

Where should a Citrix Administrator gather information to resolve the performance issue?

- A. Citrix Studio
- B. Citrix Director
- C. Provisioning Services vDisk statistics

D. Performance Monitor on the Delivery Controller

Answer: B

QUESTION 44

Scenario: A Citrix Administrator performed maintenance activities in a XenDesktop environment. The next day, a second Citrix Administrator discovers that server-hosted applications are missing from Citrix Receiver.

Where could the second administrator go to determine the cause of this issue?

- A. Citrix Director
- B. StoreFront store
- C. Configuration Logging
- D. Delivery Controller Windows Event logs

Answer: C

QUESTION 45

Scenario: A Citrix Administrator manages a XenDesktop site for a Call Center consisting of 2000 Desktop OS machines. Many users are unable to log on to the Desktop OS machines. The administrator suspects there is an issue with the Desktop OS machines that is impacting the user's ability to log on.

Where should the administrator look to gather information about this issue?

- A. HDX Insight in Citrix Director
- B. Logging node of Citrix Studio
- C. Citrix Director on the Failed Desktop OS machines node
- D. The Provisioning Services Console on the Device Collection node

Answer: C

QUESTION 46

Scenario: Users in an environment access hosted applications from thin clients connected to overhead projectors. Some of these users have complained about delays and interruptions in the video playing when viewing videos that require Adobe Flash player.

Where could a Citrix Administrator gather information to resolve this issue?

- A. Logging node in Citrix Studio
- B. Session Detail in Citrix Director
- C. Activity Manager in Citrix Director
- D. Event logs on the Delivery Controller

Answer: B

QUESTION 47

Where in Citrix Director could a Citrix Administrator validate that Flash Redirection is enabled?

- A. User Details
- B. Activity Monitor
- C. The Network tab
- D. The Sessions tab

Answer: A

QUESTION 48

Where in Citrix Director could a Citrix Administrator monitor slow performing applications?

- A. Dashboard
- B. Sessions tab
- C. User session details
- D. Logon performance tab

Answer: C

QUESTION 49

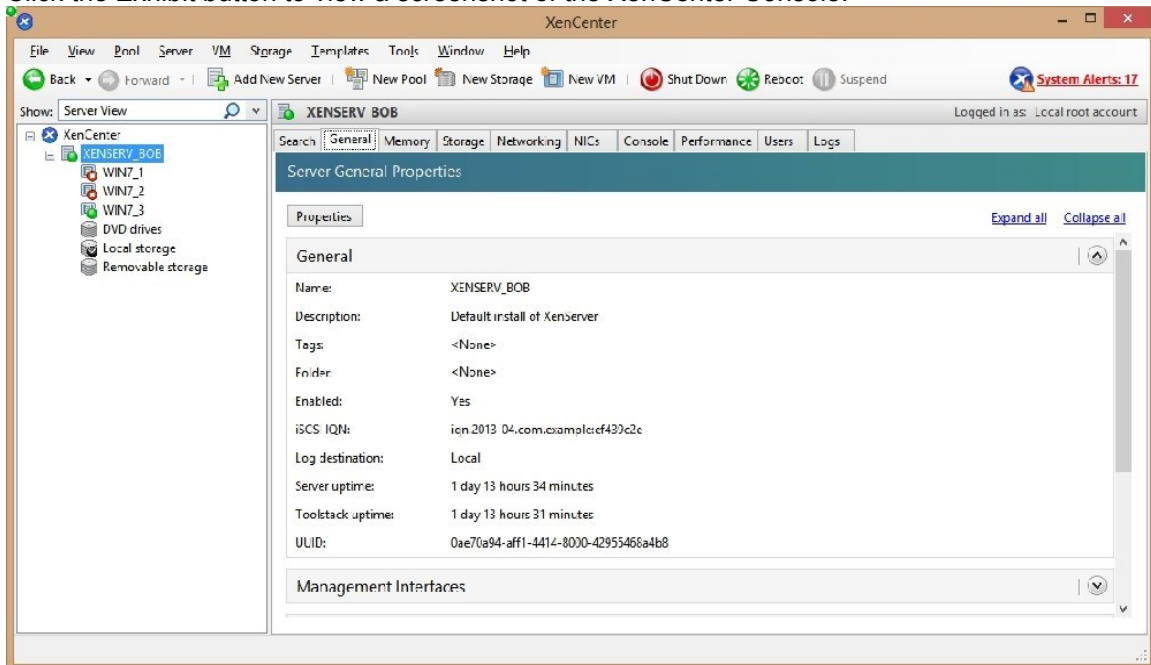
What should a Citrix Administrator do to restart a machine from Citrix Director after a user or machine name has been found?

- A. From the dashboard, select the session and restart the machine.
- B. On the User Details or Machine Details pages, select 'Power Control'.
- C. On the User Details or Machine Details pages, select 'Session Control'.
- D. From the dashboard, filter all connections, click on 'Maintenance Mode' and select 'Turn off'.

Answer: B

QUESTION 50

A Citrix Administrator discovers that several virtual desktops in Citrix Studio are unregistered. Click the Exhibit button to view a screenshot of the XenCenter Console.



Based on the information in the screenshot, why are the virtual desktops unregistered?

- A. XenServer is NOT a pool member.
- B. XenServer is in maintenance mode.

- C. The virtual machines are NOT running.
- D. The virtual machines have been suspended.

Answer: B

QUESTION 51

Scenario: Users of the Finance group lost access to their local drive through their desktop-hosted applications. Due to this issue, those users missed a critical deadline. Now management has requested that a Citrix Administrator provide a report of recent changes to the environment. Which tool could the administrator use to generate a report of recent changes to the environment?

- A. Event logs
- B. StoreFront
- C. Citrix Studio
- D. Citrix Director

Answer: C

QUESTION 52

Scenario: A Citrix Administrator needs to audit logins from the NetScaler Gateway. Company policy states that the logs need to be sent to a centralized server. What should the administrator configure to audit ICA sessions on the NetScaler Gateway?

- A. SYSLOG
- B. HDX Monitoring
- C. Application Firewall
- D. Configuration Logging
- E. NetScaler Web Logging

Answer: A

QUESTION 53

A Citrix Administrator has received several reports of network connectivity issues throughout the day and thinks these issues might be affecting the vDisk assigned to Desktop OS machines. What should the administrator monitor to determine if the network issues have affected disk streaming?

- A. NetStat Utility
- B. Error messages in Citrix Studio
- C. The number of warning messages in Citrix Director
- D. The number of retries performed by the Streaming service

Answer: D

QUESTION 54

A Citrix Administrator monitoring virtual machine network performance is unable to see memory utilization data in XenCenter. Why is the administrator unable to monitor memory utilization data?

- A. SR-IOV is NOT configured.
- B. Performance monitor service is NOT running.
- C. XenServer tools are NOT installed on the virtual machines.

D. Additional administrative rights are required to monitor memory utilization.

Answer: C

QUESTION 55

Scenario: A Citrix Administrator created a new Delivery Group named 'Sales' and assigned Desktop OS machines to users who are members of the Delivery Group. The Server OS machines assigned to the Delivery Group are based on Windows Server 2012 R2.

Where should the administrator look to identify the number of active sessions to Server OS machines assigned to the 'Sales' Delivery Group?

- A. Filter in Citrix Studio
- B. Event Log on the StoreFront server
- C. Event Log on the Delivery Controller server
- D. Filter by collection in the Provisioning Services Console

Answer: A

QUESTION 56

Scenario: When a Citrix Administrator attempts to shadow a user connected to a Desktop OS machine, the following error is displayed:

`Failed to initiate Remote Assistance`

What could be the cause of this issue?

- A. Remote Assistance is NOT enabled on the host machine.
- B. The administrator created a firewall exception for port 3398.
- C. The administrator added Citrix Director to the Intranet Zone trusted sites.
- D. The administrator does NOT have the proper scope for the user's Desktop OS machine.

Answer: A

QUESTION 57

A Citrix Administrator needs to obtain logs from Machine Creation Services.

Which .config file should the administrator manually modify to enable logging?

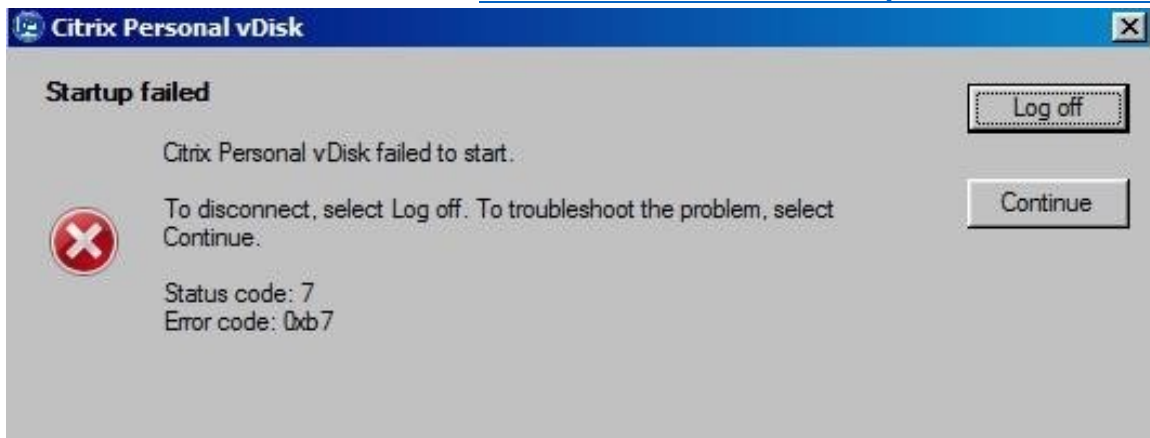
- A. BrokerService.exe.Config
- B. Citrix.Configuration.SdkWcfEndpoint.exe.Config
- C. Citrix.MachineIdentity.SdkWcfEndpoint.exe.Config
- D. Citrix.MachineCreation.SdkWcfEndpoint.exe.Config

Answer: D

QUESTION 58

Scenario: A Citrix Administrator created a Device Collection and a Delivery Group for the Human Resources (HR) and Accounting user groups. The administrator used the XenDesktop Setup Wizard to create the Desktop OS machines and assigned the V: drive as their personal drives. While testing all the new configurations prior to rolling out the Desktop OS machines to the HR user group, the administrator receives an error when attempting to access the V: drive. Users from the Accounting user group do NOT receive the error.

Click on the Exhibit button to view the error.



How could the administrator resolve this issue?

- A. Change the V: drive to another drive letter.
- B. Run the inventory update on the master image and release the image to the HR user group.
- C. Recreate the master image with Personal vDisk and release that image to the HR user group.
- D. Delete all of the Desktop OS machines and rerun the Streamed VM Setup Wizard to recreate the Desktop OS machines.

Answer: A

QUESTION 59

Scenario: An employee attempts to log in to a Desktop OS machine and receives the following error:

```
Startup Failed
Personal vDisk failed to start
Status Code: 15
```

How could a Citrix Administrator resolve this issue?

- A. Change the startup order.
- B. Restart the Desktop OS machine.
- C. Run an inventory update on the Desktop OS machine.
- D. Reconfigure the Virtual Delivery Agent of the affected Desktop OS machine.

Answer: C

QUESTION 60

Scenario: An application is NOT functioning as expected. The application was installed on a vDisk that has been placed in Standard mode. The vDisk is assigned to Desktop OS machines. Those Desktop OS machines have a 5 GB cache disk associated with them and the vDisk is configured to 'cache to RAM with overflow to disk'. A Citrix Administrator attempted to view the Windows event logs from the previous week, but the logs only go back to the most recent restart. What should the administrator do to ensure that all logs are retained?

- A. Enable WINRM on the image.
- B. Change the location of the write cache.
- C. Use the write-eventlog PowerShell cmdlet.
- D. Change the path of the event logs to that of the write cache disk.

Answer: D

[Visit PassLeader and Download Full Version 1Y0-201 Exam Dumps](#)