

2016 NEW CHANGED 70-680 Exam Questions RELEASED Today!

【Exam Code】 [70-680](#)

【Exam Name】 Windows 7, Configuring

【Certification Provider】 Microsoft

2016 NEW 70-680 Study Guides:

1. Installing, upgrading, and migrating to Windows 7;
2. Deploying Windows 7;
3. Configuring hardware and applications;
4. Configuring network connectivity;
5. Configuring access to resources;
6. Configuring mobile computing;
7. Monitoring and maintaining systems that run Windows 7;
8. Configuring backup and recovery options;

Braindump2go 2016 NEW 70-680 Exam PDF and VCE
Dumps **580Q** Free Share: **81-100**

QUESTION 81

Your company has a main office and a branch office. A portable computer runs Windows 7. On the computer, you configure a printer for each office.

You need to configure printing on the computer to meet the following requirements:

- When you are located in the main office, all documents must automatically print to the main office printer.
- When you are located in the branch office, all documents must automatically print to the branch office printer.

What should you do?

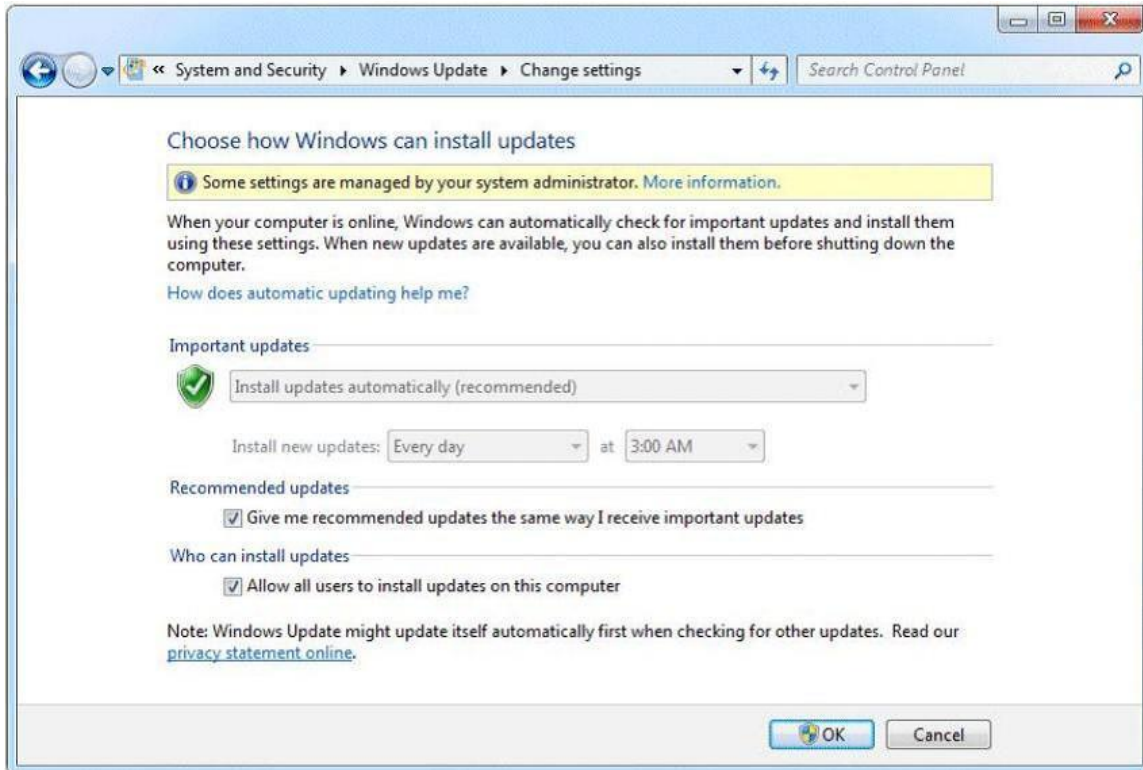
- A. From Location and Other Sensors, configure a default location.
- B. From Devices and Printer, configure the Manage Default Printers settings.
- C. From Region and Language, modify the Location settings.
- D. From Network and sharing Center, configure the network location.

Answer: B

QUESTION 82

You have a stand-alone computer that runs Windows 7.

You open Windows Update as shown in the exhibit. (Click the Exhibit button.)



You need to ensure that you can manually change the Windows Update settings on the computer.

What should you do?

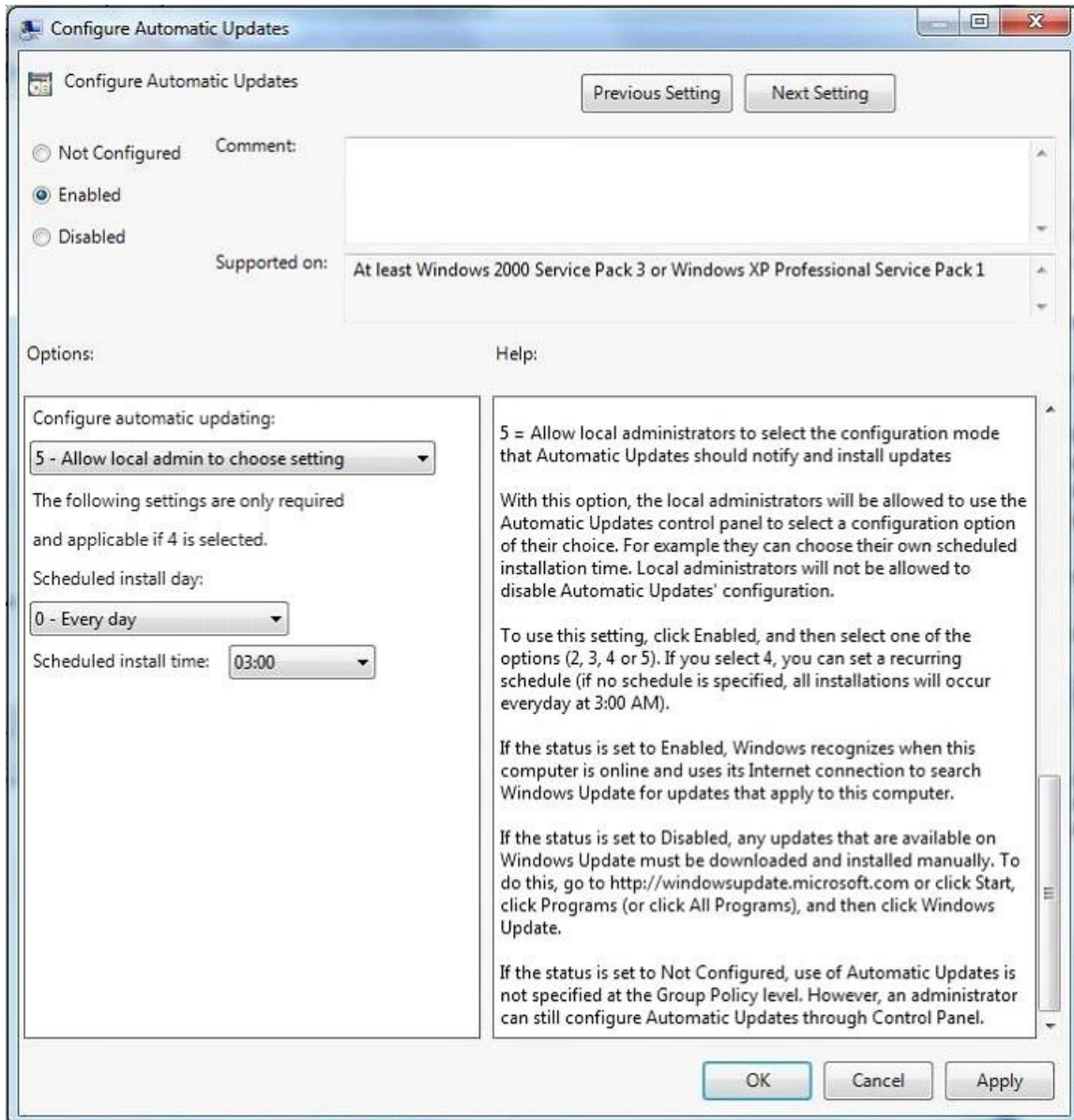
- A. Log on to Windows 7 as member of the Administrators group.
- B. From the local Group Policy, modify the Windows Update settings.
- C. Right-click Windows Update and select Run as administrator.
- D. Right-click the command prompt, select Run as administrator, and then run Wuapp.exe.

Answer: B

Explanation:

Configuring Automatic Updates by using local Group Policy

1. Click Start, and then click Run.
2. Type gpedit.msc, and then click OK.
3. Expand Computer Configuration.
4. Right-click Administrative Templates, and then click Add/Remove Templates.
5. Click Add, click Wuau.adm in the Windows\Inf folder, and then click Open.
6. Click Close.
7. Under Computer Configuration, expand Administrative Templates, expand Windows



Components, and then expand Windows Update.

QUESTION 83

You have a reference computer that runs Windows 7.

You plan to create an image of the computer and then deploy the image to 100 computers.

You need to prepare the reference computer for imaging.

What should you do before you create the image?

- A. Run Package Manager.
- B. Run the System Preparation tool.
- C. Install the User State Migration Tool.
- D. Install Windows Automated Installation Kit.

Answer: B

Explanation:

Sysprep

Sysprep is a tool designed for corporate system administrators, OEMs, and others who need to deploy the Windows XP operating system on multiple computers. After performing the initial setup steps on a single system, you can run Sysprep to prepare the sample computer for cloning. Sysprep prepares the image for capture by cleaning up various user-specific and computer-specific settings, as well as log files. The reference installation now is complete and ready to be imaged.

QUESTION 84

You have a standalone computer that runs Windows 7.
You need to prevent non-administrative users from using Device Manager.
Users must be able to access Event Viewer.
What should you do?

- A. From Control Panel, modify the default settings for media and devices.
- B. From Control Panel, modify the default settings for device installation.
- C. From the local computer policy, modify the application control policies.
- D. From the local computer policy, modify the Microsoft Management Console (MMC) settings.

Answer: D

Explanation:

Controlling MMC usage by using local Group Policy

To control MMC usage by using local Group Policy

11. Open MMC 3.0.

12. On the File menu, click Add/Remove Snap-in.

13. In the Available snap-ins list, click the Group Policy editor, and then click Add.

14. In the Select Group Policy Object wizard, use the default setting, Local Computer, in the Group Policy Object field.

15. Click Finish to close the Select Group Policy Object wizard.

16. By default, all available snap-in extensions are enabled. If you want to enable only certain extensions, highlight the snap-in in the Selected snap-ins list, and then click Edit Extensions.

17. By default, snap-ins load as child objects of the Console Root node. Click Advanced to modify this behavior and allow you to choose a different parent snap-in.

18. In the Add or Remove Snap-ins dialog box, click OK.

19. Before closing the new console, perform any of these procedures:

- To restrict access to author mode in MMC

- To restrict access to a permitted list of snap-ins

- To permit or restrict access to a snap-in

QUESTION 85

You have a computer that runs Windows 7 and Windows Internet Explorer 8.

A user named User1 attempts to access a Web page. User1 fails to access the Web page and receives an error message stating that the page does not have a rating.

You need to configure Internet Explorer to allow User1 to access Web pages that do not have a rating.

Which settings should you modify?

- A. Content Advisor
- B. InPrivate Filtering
- C. Parental Controls
- D. Restricted Sites

Answer: A

Explanation:

Using Content Advisor to help block inappropriate web content The Internet is a great resource for children, offering a wealth of information and experiences. However, it can also expose

children to information that might not be appropriate for them. Content Advisor allows you to control the types of Internet content that can be viewed on your computer. Depending on how you configure it, Content Advisor uses ratings that websites voluntarily provide to block or allow certain content. Because not all websites are rated, unrated websites are automatically blocked (but you can choose to allow them). Once you've adjusted the settings and turn Content Advisor on, it checks websites as you visit them. To use Content Advisor, you first need to create the supervisor password, and then you can specify the filters and rules you want applied to your children's web use. To change settings, you'll need to log in with the supervisor password before you can make changes. The following procedures describe how to create or change your supervisor password, and how to make specific changes to control Internet use.

To allow unrated sites

By default, content advisor will block unrated websites. To allow unrated sites to be viewed, follow the steps below.

9. Click to open Internet Explorer.

10. Click the Tools button, and then click Internet Options.

11. Click the Content tab, and then, under Content Advisor, click Settings. If you are prompted for an administrator password or confirmation, type the password or provide confirmation.

12. In the Supervisor Password Required dialog box, type your password, and then click OK.

13. In the Content Advisor dialog box, click the General tab.

14. Under User options

QUESTION 86

Which of the following can be used to increase the physical memory on your Windows 7 PC and increase the speed?

- A. BranchCache
- B. Aero Glass
- C. DirectAccess
- D. ReadyBoost

Answer: D

QUESTION 87

To which of the following versions and editions of Windows 7 can you directly upgrade a computer running Windows Vista Enterprise (x86)?

- A. Windows 7 Home Professional (x86)
- B. Windows 7 Ultimate (x86)
- C. Windows 7 Ultimate (x64)
- D. Windows 7 Enterprise (x64)

Answer: B

Explanation:

Windows 7 Upgrade paths:

<http://technet.microsoft.com/en-us/library/dd772579%28v=ws.10%29.aspx> The only applicable solution is Windows 7 Enterprise (64-bit) as for the following reasons:

All versions are support Hardware wise.

Requirements:

Windows 7 Home Premium, Professional, Ultimate, and Enterprise editions have the following minimum hardware requirements:

1 GHz 32-bit (x86) or 64-bit (x64) processor

1 GB of system memory a 40-GB hard disk drive (traditional or SSD) with at least 15 GB of available space a graphics adapter that supports DirectX 9 graphics, has a Windows Display Driver Model (WDDM) driver, Pixel Shader 2.0 hardware, and 32 bits per pixel and a minimum of 128 MB graphics memory XP Mode

Windows XP Mode is a downloadable compatibility option that is available for the Professional, Enterprise, and Ultimate editions of Windows 7. Windows XP Mode uses the latest version of Microsoft Virtual PC to allow you to run an installation of Windows XP virtually under Windows 7. Use all of the installed memory

The x86 version supports a maximum of 4 GB of RAM, whereas the x64 version supports a maximum of 8 GB of RAM.

Windows 7 Professional

Windows 7 Professional is available from retailers and on new computers installed by manufacturers. It supports all the features available in Windows Home Premium, but you can join computers with this operating system installed to a domain. It supports EFS and Remote Desktop Host but does not support enterprise features such as AppLocker, DirectAccess, BitLocker, and BranchCache.

Windows 7 Enterprise and Ultimate Editions

The Windows 7 Enterprise and Ultimate editions are identical except for the fact that Windows 7 Enterprise is available only to Microsoft's volume licensing customers, and Windows 7 Ultimate is available from retailers and on new computers installed by manufacturers. The Enterprise and Ultimate editions support all the features available in other Windows 7 editions but also support all the enterprise features such as EFS, Remote Desktop Host, AppLocker, DirectAccess, BitLocker, BranchCache, and Boot from VHD.

QUESTION 88

A user has a home computer with a cable Internet connection and no other computers on his home network.

Which of the following methods can this person use to upgrade from Windows 7 Home Premium to Windows 7 Ultimate?

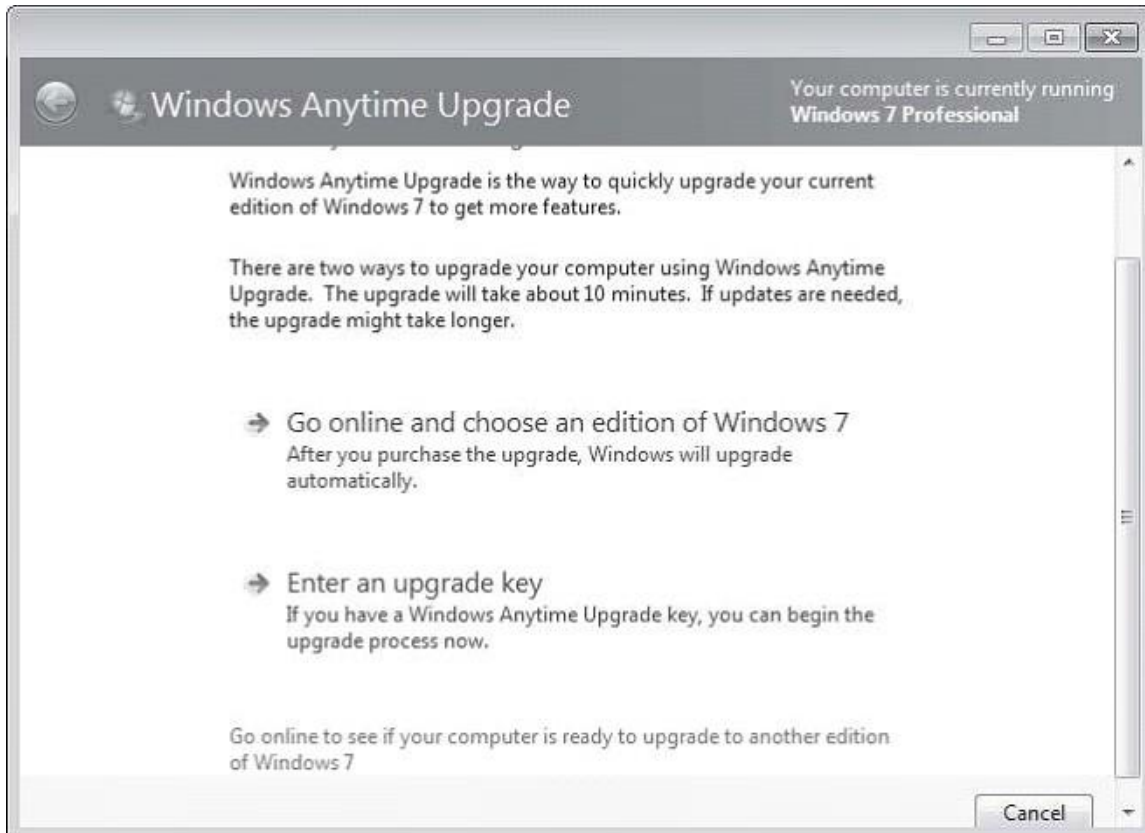
- A. Sysprep
- B. Windows PE
- C. WDS
- D. Windows Anytime Upgrade

Answer: D

Explanation:

Windows Anytime Upgrade

With Windows Anytime Upgrade, shown in Figure, you can purchase an upgrade to an application over the Internet and have the features unlocked automatically. This upgrade method is more suitable for home users and users in small businesses where a small number of intra-edition upgrades is required.



QUESTION 89

Which of the following tools can you use to determine if the applications installed on your computer running Windows Vista are known to have problems with Windows 7?

- A. Windows 7 Upgrade Advisor
- B. Sysprep
- C. USMT
- D. Windows PE

Answer: A

Explanation:

Windows 7 Upgrade Advisor

Prior to attempting to perform the upgrade from Windows Vista to Windows 7, you should run the Windows 7 Upgrade Advisor. The Windows 7 Upgrade Advisor is an application that you can download from Microsoft's Web site that will inform you if Windows 7 supports a computer running the current hardware and software configuration of Windows Vista.

Prior to running the Windows 7 Upgrade Advisor, you should ensure that all hardware that you want to use with Windows 7, such as printers, scanners, and cameras, are connected to the computer. The Upgrade Advisor generates a report that informs you of which applications and devices are known to have problems with Windows 7.

QUESTION 90

Which of the following operating systems support an offline migration using USMT? Choose three.

- A. Windows 2000 Professional
- B. Windows XP Professional

- C. Windows Vista
- D. Windows 7

Answer: BCD

QUESTION 91

Which of the following must you download from Microsoft's Web site to obtain USMT 4.0?

- A. Windows Anytime Upgrade
- B. Windows Upgrade Advisor
- C. WAIK
- D. Microsoft Toolkit

Answer: C

Explanation:

User State Migration Tool

USMT 4.0 is a command-line utility that allows you to automate the process of user profile migration. The USMT is part of the Windows Automated Installation Kit (WAIK) and is a better tool for performing a large number of profile migrations than Windows Easy Transfer. The USMT can write data to a removable USB storage device or a network share but cannot perform a direct side-by-side migration over the network from the source to the destination computer. The USMT does not support user profile migration using the Windows Easy Transfer cable. USMT migration occurs in two phases, exporting profile data from the source computer using ScanState and importing profile data on the destination computer using LoadState.

QUESTION 92

Which Windows Setup configuration pass applies settings to Windows 7 before Windows Welcome starts?

- A. OobeSystem
- B. AuditSystem
- C. Specialize
- D. OfflineServicing

Answer: A

QUESTION 93

You require fault tolerance for your operating system so that your computer running Windows 7 Home Premium can still boot up if a disk fails. You have two disks and unallocated space on your second disk. What should you do?

- A. Create a VHD and install an image of your computer on the VHD. Use BCDEdit to make the VHD bootable.
- B. Create a RAID-0 volume.
- C. Create a RAID-1 volume.
- D. Create a RAID-5 volume.

Answer: C

QUESTION 94

You have two computers on the same subnet. The computers have the IPv6 addresses shown in the following table:

| Computer name | IPv6 address |
|---------------|--------------------|
| Computer1 | fe80::39cd:4c93%10 |
| Computer2 | Fe80::44df:1b68%12 |

You need to test the connection to the IPv6 address from Computer1 to Computer2. Which command should you run?

- A. Ping -6 fe80::44df:1b68%12
- B. Ping -6 fe80::44df:1b68%10
- C. Ping -R fe80::44df:1b68%12
- D. Ping -R fe80::44df:1b68%10

Answer: B

Explanation:

If you are pinging from one host to another using link-local addresses, you also need to include your interface ID, for example ping fe80::39cd:4c93%10.

The % character followed by a number after each IPv6 address is the interface ID. If you want to display the configuration of the IPv6 interfaces on the local computer, you can enter netsh interface ipv6 show address.

Ping -6

Force using IPv6.

QUESTION 95

You have a computer that runs Windows 7. IPv6 is disabled on the computer.

The computer has the following IPv4 settings:

- IP address: 10.1.1.193
- Subnet mask: 255.255.0.0
- Default gateway: 10.1.1.194
- Preferred DNS server: 10.1.1.195

You need to ensure that the computer can only communicate with computers on the local subnet. What should you do?

- A. Delete the default gateway address.
- B. Delete the preferred DNS server IP address.
- C. Configure the subnet mask to use 255.255.255.0.
- D. Configure the subnet mask to use 255.255.255.192.

Answer: A

Explanation:

Why gateways work

Default gateways are important to make IP routing work efficiently. In most cases, the router that acts as the default gateway for TCP/IP hosts--either a dedicated router or a computer that connects two or more network segments--maintains knowledge of other networks in the larger network and how to reach them. TCP/IP hosts rely on default gateways for most of their communication needs with hosts on remote network segments. In this way, individual hosts are freed of the burden of having to maintain extensive and continuously updated knowledge about individual remote IP network segments. Only the router that acts as the default gateway needs to maintain this level of routing knowledge to reach other remote network segments in the larger internetwork. If the default gateway fails, communication beyond the local network segment may be impaired. To prevent this, you can use the Advanced TCP/IP Settings dialog box (in Network Connections) for each connection to specify multiple default gateways. You can also use the route command to manually add routes to the routing table for heavily used hosts or networks.

QUESTION 96

You are running Windows 7 on a portable computer. A custom power plan named "On The Move" is optimized for battery life. The computer remains running when the portable computer is closed. You need to change a setting so that when you close the portable computer, it enters sleep mode.

Which setting should you change?

(To answer, select the appropriate setting in the work area.)



Answer:



QUESTION 97

You have a computer that runs Windows 7.

You need to modify the file extensions that are associated to Internet Explorer.

What should you do?

- A. From Internet Explorer, click Tools and then click Manage Add-ons.
- B. From Control Panel, open Default Programs and then click Set Associations.
- C. From the local Group Policy, expand Computer Configuration and then click Software Settings.
- D. From Window Explorer, right-click %programfiles%\Internet Explorer\iexplore.exe and then click Properties.

Answer: B

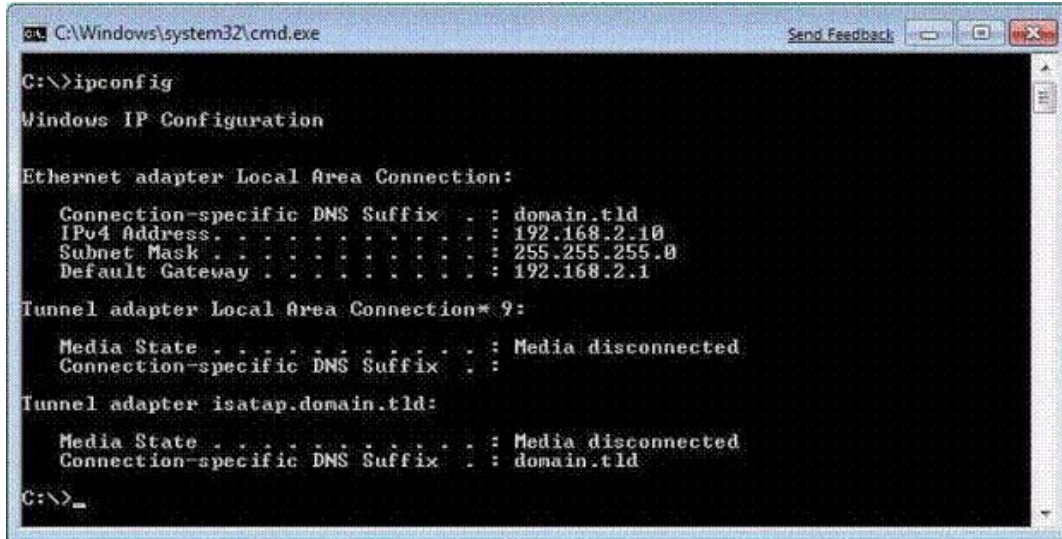
QUESTION 98

You have a computer that runs Windows 7.

You run Ipconfig as shown in the exhibit. (Click the Exhibit button.)

You need to ensure that you can establish a DirectAccess connection to the network.

What should you do first?



```
C:\Windows\system32\cmd.exe
C:\>ipconfig

Windows IP Configuration

Ethernet adapter Local Area Connection:

    Connection-specific DNS Suffix  . : domain.tld
    IPv4 Address. . . . . : 192.168.2.10
    Subnet Mask . . . . . : 255.255.255.0
    Default Gateway . . . . . : 192.168.2.1

Tunnel adapter Local Area Connection* 9:

    Media State . . . . . : Media disconnected
    Connection-specific DNS Suffix  . :

Tunnel adapter isatap.domain.tld:

    Media State . . . . . : Media disconnected
    Connection-specific DNS Suffix  . : domain.tld

C:\>_
```

- A. Create a new VPN connection.
- B. Configure a static IPv4 address.
- C. Enable IPv6 on the network adapter.
- D. Add an additional default gateway address.

Answer: C

QUESTION 99

You have a computer that runs Windows 7.
You discover that an application named App1 runs during the startup process.
You need to prevent only App1 from running during startup. Users must be allowed to run App1 manually.
What should you do?

- A. From the local Group Policy, modify the application control policy.
- B. From the local Group Policy, modify the software restriction policy.
- C. From the System Configuration tool, select Diagnostic Startup.
- D. From the System Configuration tool, modify the Startup applications.

Answer: D

QUESTION 100

You are in charge of two computers that are respectively named Computer1 and Computer2.
Computer1 runs Windows 7 and Computer2 runs Windows XP Professional.
On Computer1, you enable Remote Desktop as shown in the Remote Desktop exhibit. (Click the Exhibit button.)



Later you log on to Computer2 and try to connect to Computer1 by using Remote Desktop. The connection fails and you receive the error message shown in the Remote Desktop Disconnected exhibit. (Click the Exhibit button.)



You need to ensure, that you can connect to Computer1 by using Remote Desktop. What action should you perform?

- A. On Computer1, enable the Allow connections from computers running any version of Remote Desktop setting.
- B. On Computer2, assign the Client (Respond Only) IPsec policy.
- C. On Computer1, add your user account to the Remote Desktop Users group.
- D. On Computer2, create a firewall exception for the Remote Desktop Protocol (RDP).

Answer: A