

## **2016 NEW CHANGED 70-686 Exam** **Questions RELEASED Today!**

**【Exam Code】** [70-686](#)

**【Exam Name】** Windows 7, Enterprise Desktop Administrator

**【Certification Provider】** Microsoft

### **2016 NEW 70-686 Study Guides:**

- 1.Planning and managing a client life cycle strategy
- 2.Designing a standard image
- 3.Designing client configurations
- 4.Designing a Windows 7 client deployment
- 5.Designing application packages for deployment
- 6.Identifying and resolving deployment and client configuration issues

### **Braindump2go 2016 NEW 70-686 Exam PDF and VCE** **Dumps 200Q Free Share: 81-100**

#### **QUESTION 81**

A network consists of 1,000 laptop computers that run Windows XP.  
The computers do not have access to the corporate network.  
You plan to migrate 200 of the computers immediately to Windows 7.  
The remainder will be migrated over the next several months.  
You need to plan the most efficient method for activating all of the computers.  
What should you do?

- A. Use Multiple Activation Key (MAK) Independent for the first 200 computers, and then use Multiple Activation Key (MAK) Proxy for the remaining computers.
- B. Use the Key Management Service (KMS) for all the computers.
- C. Use Multiple Activation Key (MAK) Independent for all the computers.
- D. Use Multiple Activation Key (MAK) Proxy for the first 200 computers, and then use the Key Management Service (KMS) for the remaining computers.

**Answer:** B

**Explanation:**

Key Management Service (KMS) requires a count of 25 or higher from the KMS host to activate itself.

refer to <http://technet.microsoft.com/en-us/library/ee939272.aspx>

**[70-686 Dumps](#)**   **[70-686 Exam Questions](#)**   **[70-686 PDF](#)**   **[70-686 VCE](#)**  
**<http://www.braindump2go.com/70-686.html>**

MAK:

If users install a MAK using the user interface (UI), the MAK client attempts to activate itself over the Internet one time. If the users install a MAK using the Slmgr.vbs script, the MAK client does not try to activate itself automatically.

refer to <http://technet.microsoft.com/en-us/library/ff793438.aspx>

Hints:

The computers do not have access to the internet

### QUESTION 82

Your company's network is shown in the following diagram.

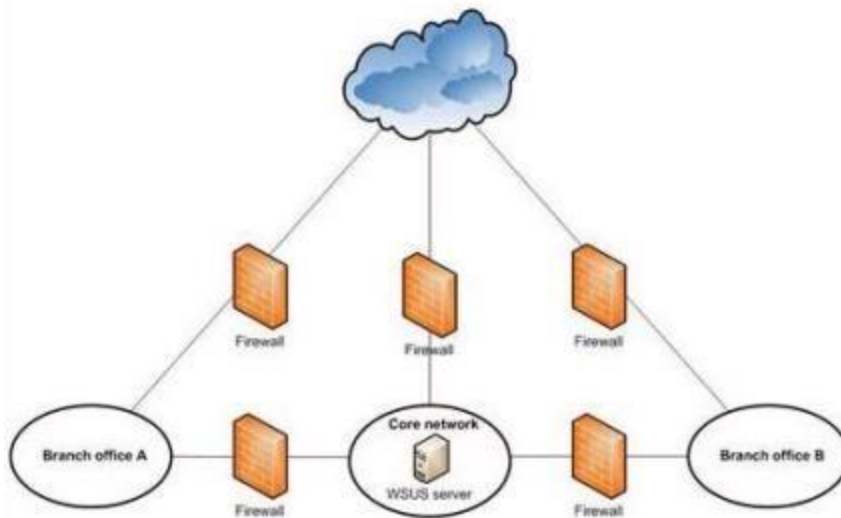
Each office is connected to the Internet through a high-bandwidth connection.

The branch offices are connected to the core network through low-bandwidth connections.

Microsoft Windows Server Update Services (WSUS) must provide software updates for all offices.

You need to design the WSUS infrastructure to minimize traffic over the low-bandwidth connections.

Which two actions should you perform? (Each correct answer presents part of the solution. Choose two.)



- A. Deploy BranchCache on the WSUS server and client computers
- B. Configure WSUS to use updates that are stored locally
- C. Configure WSUS to use updates that are stored on Microsoft Update
- D. Deploy Quality of Service (QoS) on the WSUS server and client computers
- E. Deploy WSUS servers in the branch offices

**Answer:** CE

**Explanation:**

WSUS update from Microsoft update is faster than core network

Deploy WSUS servers in each branch office in order to provide WSUS server for branch client.

hints:

1. Each office is connected to the Internet through a high-bandwidth connection.
2. The branch offices are connected to the core network through low-bandwidth connections.

### QUESTION 83

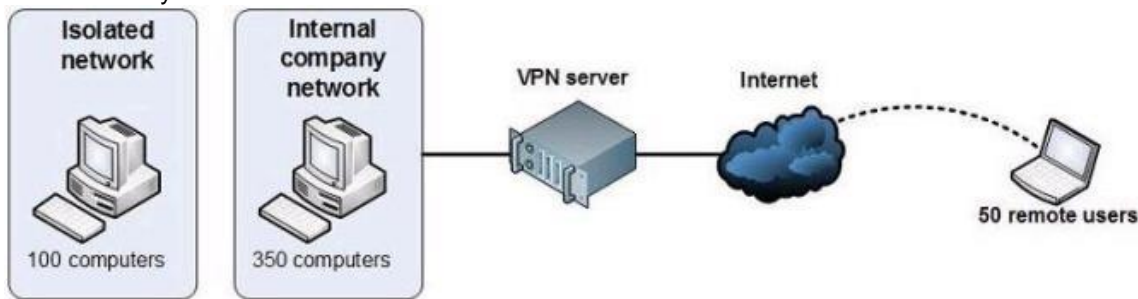
Your network is configured as shown in the following diagram.

You are planning to deploy Windows 7.

You have the following requirements:

- Use BitLocker on all computers in the isolated network.

- Provide DirectAccess on all portable computers.
  - Use the Key Management Service (KMS) to activate all client computers.
- You need to plan a client computer licensing strategy that meets the requirements.  
What should you do?



- A. License 500 copies of Windows 7 Ultimate.
- B. License 500 copies of Windows 7 Enterprise.
- C. License 350 copies of Windows 7 Professional, license 150 copies of Windows 7 Ultimate, and purchase Software Assurance for the Windows 7 Professional licenses.
- D. License 350 copies of Windows 7 Enterprise, and license 150 copies of Windows 7 Ultimate.

**Answer: B**

**Explanation:**

hints:

Direct Access only available for Ultimate and Enterprise only.

Company should use Enterprise version

#### QUESTION 84

Your company has 1,000 client computers that run Windows 7.

The company uses several custom line-of-business applications that are not compatible with Windows 7.

You need to distribute a Microsoft Enterprise Desktop Virtualization (MED-V) virtual machine (VM) image that includes the custom applications to all Windows 7 client computers.

What should you do?

- A. Mount the VM image from the MED-V workspace.
- B. Deploy the VM image from the MED-V server.
- C. Deploy the VM image by using Windows Deployment Services (WDS).
- D. Deploy the VM image by using Windows Server Update Services (WSUS).

**Answer: B**

#### QUESTION 85

Your company plans to upgrade all client computers to Windows 7.

The company uses a custom line-of-business application.

The application contains sensitive data.

The application will not run on Windows 7

You establish that Microsoft Enterprise Desktop Virtualization (MED-V) is the appropriate technology to allow your organization to continue to use the application.

You need to ensure that the virtual machine (VM) images that contain sensitive data can be used only when the user is connected to the MED-V server.

What should you do?

- A. Using MED-V TrimTransfer technology, deploy the VM image over the network

- B. In the MED-V console, configure the MED-V workspace to prevent offline operation
- C. Use BitLocker Drive Encryption to encrypt the drive on which the VM image is stored
- D. Using Microsoft System Center Configuration Manager, deploy the VM image to an image store directory

**Answer: B**

#### QUESTION 86

The client computers in your network run either Windows XP or Windows 7. All client computers are in a single Active Directory Domain Services (AD DS) organizational unit (OU) named MyClients.

You install Windows Software Update Services (WSUS).

You create a Group Policy object (GPO) that enables automatic updates from the WSUS server, and you link the GPO to the MyClients OU.

You place all client computers in a targeting group named MyClients.

Testing reveals that a security update that is applicable to both Windows XP and Windows 7 causes a line-of-business application to fail on the Windows XP client computers.

You need to ensure that the application runs on the Windows XP client computers and that the Windows 7 client computers receive the security update.

What should you do?

- A. Remove the Windows XP client computers from the MyClients targeting group. Approve the update for installation to the All Computers targeting group.
- B. Remove the Windows 7 client computers from the MyClients targeting group. Approve the update for installation to the All Computers targeting group.
- C. Create a targeting group named MyXPclients beneath the MyClients targeting group. Move the Windows XP client computers to the MyXpClients targeting group. Approve the update for installation to the MyClients targeting group.
- D. Remove the Windows 7 client computers from the MyClients targeting group. Approve the update for installation to the Unassigned Computers targeting group.

**Answer: D**

#### Explanation:

All computers targeting group = assigned group and unassigned group.

Unassigned computer targeting group = all computer which is not assign to any group.



untitled

hints:

Windows 7 remove from MyClients = unassigned computer targeting group

Windows XP = MyClients targeting group

update will only done for unassigned computer targeting group

#### QUESTION 87

Your network has a single domain with 1,000 client computers that run Windows 7.

You use Microsoft System Center Configuration Manager 2007 to distribute and install software applications.

All users have standard user accounts.

You plan to use Group Policy to ensure that application installation functions properly.

You need to design the User Account Control (UAC) policy.

Which setting should you select? To answer, select the appropriate setting in the work area.

Answer Area

- ☐ User Account Control: Admin Approval Mode for the Built-in Administrator account
- ☐ User Account Control: Allow UIAccess applications to prompt for elevation without using the s...
- ☐ User Account Control: Behavior of the elevation prompt for administrators in Admin Approval ...
- ☐ User Account Control: Behavior of the elevation prompt for standard users
- ☐ User Account Control: Detect application installations and prompt for elevation
- ☐ User Account Control: Only elevate executables that are signed and validated
- ☐ User Account Control: Only elevate UIAccess applications that are installed in secure locations
- ☐ User Account Control: Run all administrators in Admin Approval Mode
- ☐ User Account Control: Switch to the secure desktop when prompting for elevation
- ☐ User Account Control: Virtualize file and registry write failures to per-user locations

**Answer:**

Answer Area

- ☐ User Account Control: Admin Approval Mode for the Built-in Administrator account
- ☐ User Account Control: Allow UIAccess applications to prompt for elevation without using the s...
- ☐ User Account Control: Behavior of the elevation prompt for administrators in Admin Approval ...
- ☐ User Account Control: Behavior of the elevation prompt for standard users
- ☒ User Account Control: Detect application installations and prompt for elevation
- ☐ User Account Control: Only elevate executables that are signed and validated
- ☐ User Account Control: Only elevate UIAccess applications that are installed in secure locations
- ☐ User Account Control: Run all administrators in Admin Approval Mode
- ☐ User Account Control: Switch to the secure desktop when prompting for elevation
- ☐ User Account Control: Virtualize file and registry write failures to per-user locations

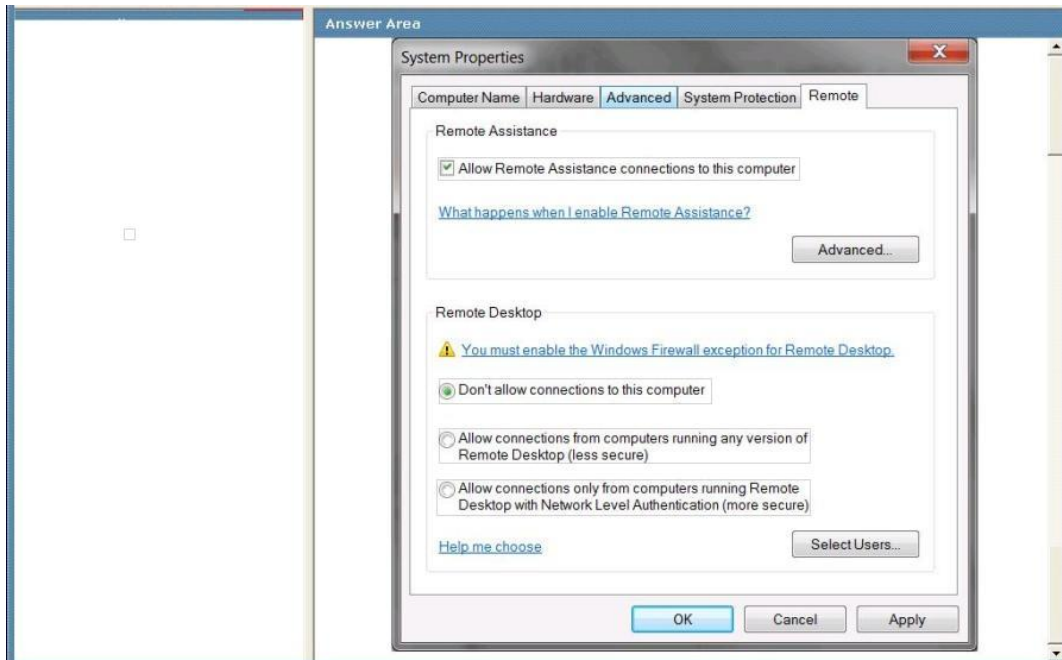
#### QUESTION 88

You are creating a Windows 7 image.

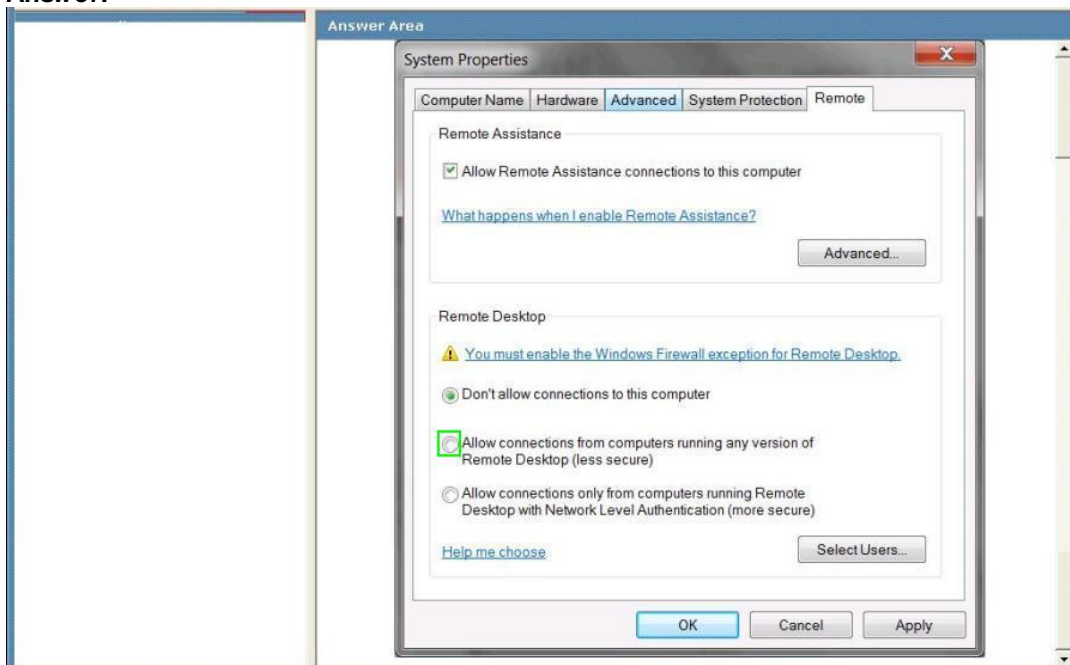
You need to prevent users from sharing their desktop sessions with remote users.

You also need to allow administrators who are using Windows XP to administer the Windows 7 image remotely.

Which settings should you configure? To answer, select the appropriate setting or settings in the work area.



**Answer:**



**QUESTION 89**

A company has 1,000 computers in the main office and 20 computers in store kiosks.

All the computers run Windows 7 Enterprise.

The kiosk computers do not have network connections.

The company brands the Microsoft Internet Explorer program window on all computers by displaying the company logo at the left end of the title bar.

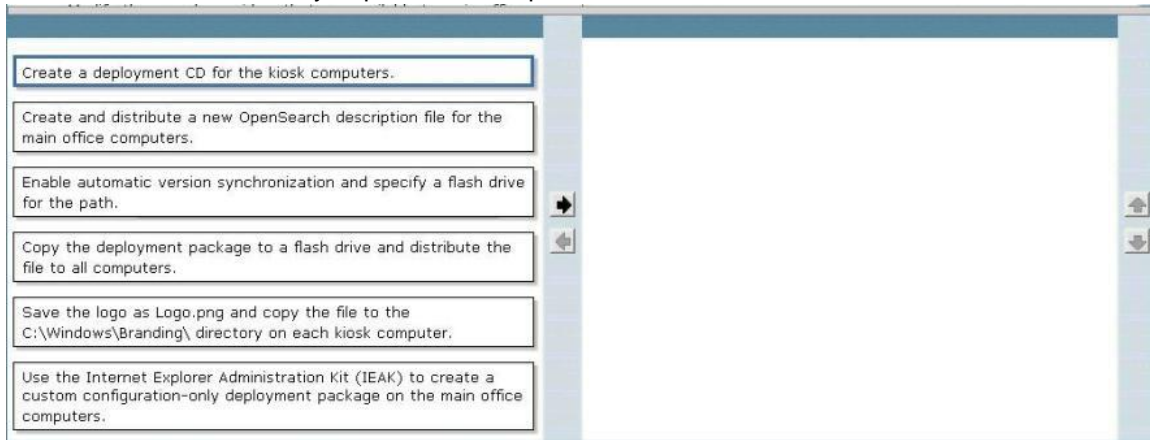
The company changes its logo.

You have the following requirements:

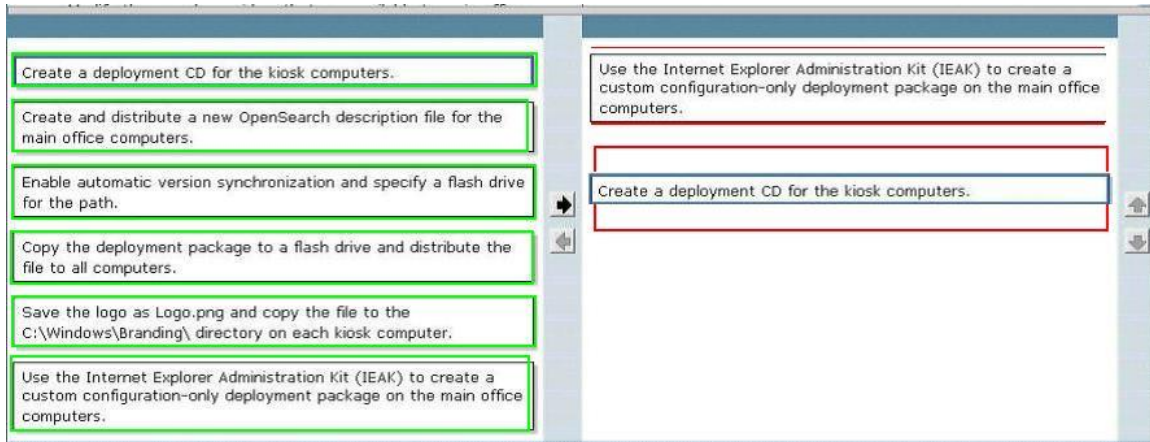
- Display the new logo on the Internet Explorer program window title bar on the main office computers and the kiosk computers.
- Modify the search providers that are available to main office computers.



You need to define Internet Explorer settings to support the requirements.  
Which two actions should you perform in sequence?



**Answer:**



#### QUESTION 90

You are planning to upgrade Microsoft Internet Explorer.  
You must create a report that identifies which computers are successfully upgraded.  
You need to design a deployment method that meets this requirement.  
What should you use? (Choose all that apply.)

- A. Microsoft System Center Essentials
- B. Windows Intune
- C. Microsoft System Center Configuration Manager
- D. Internet Explorer Administration Kit (IEAK) and Group Policy
- E. Windows Server Update Services (WSUS)

**Answer:** ABDE

#### QUESTION 91

You use a computer named Client02 to manage the BitLocker configuration on a remote computer named Client01.

A new company policy states that when BitLocker is used, you must be able to access the data in case of a system failure.

You need to comply with the company policy.

Using manage-bde, how should you achieve this goal? (To answer, drag the appropriate parameter from the list of options to the correct location or locations in the work area.)

**Answer Choices Group 1**

☐ -on   ☐ -tpm   ☐ -lock

☐ C:

**Answer Choices Group 2**

☐ Client01

☐ Client02

☐ C:\BitLocker

☐ -RecoveryKey

☐ -ComputerName

☐ -TakeOwnership

**Answer Area**

Administrator: Command Prompt

C:\>manage-bde

**Answer:**

**Answer Choices Group 1**

☒ -on   ☒ -tpm   ☒ -lock

☒ C:

**Answer Choices Group 2**

☒ Client01

☒ Client02

☒ C:\BitLocker

☒ -RecoveryKey

☒ -ComputerName

☒ -TakeOwnership

**Answer Area**

Administrator: Command Prompt

C:\>manage-bde ☒ -on ☒ C: ☒ -RecoveryKey ☒ C:\BitLocker ☒ -ComputerName ☒ Client01

### QUESTION 92

A network has a single domain with 1,000 client computers that run Windows 7.

A large number of software installation scripts are configured to run on the client computers.

You need to recommend a Group Policy setting that allows users to log on to their computers as soon as possible at first boot.

What should you recommend?

**Answer Area**

Setting	State
Allow logon scripts when NetBIOS or WINS is disabled	Not configured
Maximum wait time for Group Policy scripts	Not configured
Run Windows PowerShell scripts first at computer sta...	Not configured
Run logon scripts synchronously	Not configured
Run shutdown scripts visible	Not configured
Run startup scripts asynchronously	Not configured
Run startup scripts visible	Not configured
Run Windows PowerShell scripts first at user logon, l...	Not configured

**Answer:**




Setting	State
Allow logon scripts when NetBIOS or WINS is disabled	Not configured
Maximum wait time for Group Policy scripts	Not configured
Run Windows PowerShell scripts first at computer sta...	Not configured
Run logon scripts synchronously	Not configured
Run shutdown scripts visible	Not configured
Run startup scripts asynchronously	Not configured
Run startup scripts visible	Not configured
Run Windows PowerShell scripts first at user logon, l...	Not configured

### QUESTION 93

A company network includes Windows 7 client computers and DirectAccess. When using DirectAccess, users cannot connect to the company's internal resources. You need to create a batch file that users can execute to trace all network traffic for DirectAccess from their home computers. Which command should you use? To answer, drag the appropriate terms from the list of terms to the correct location or locations in the work area.

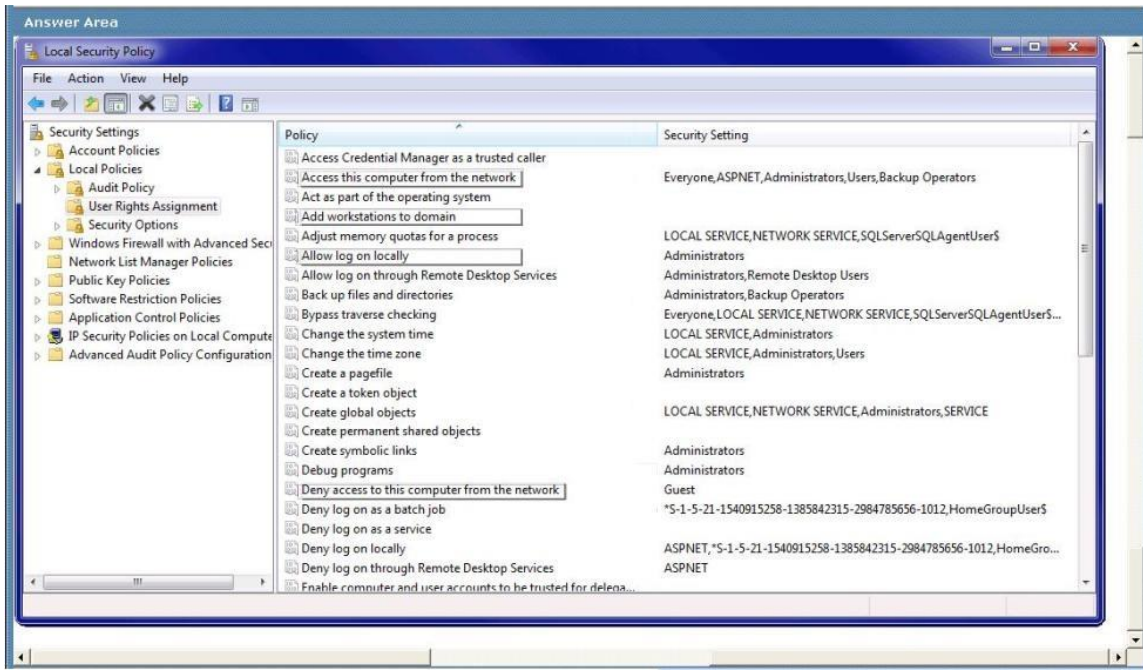
Answer Choices	Answer Area
add	
set	
start	
trace	
netsh	
scenario=directaccess	
provider=Microsoft-Windows-DNS-Client	

**Answer:**

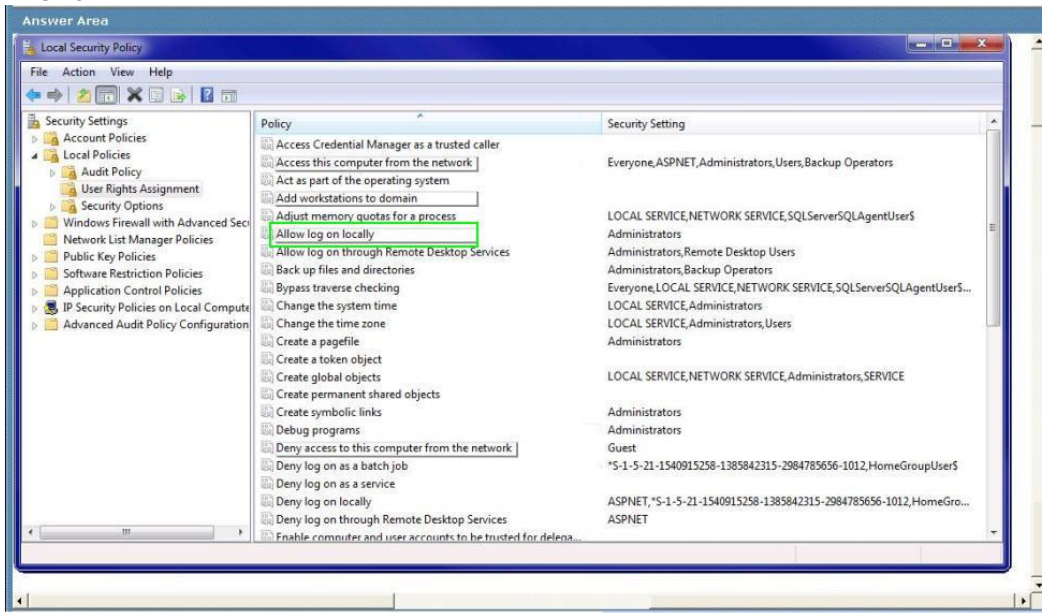
Answer Choices	Answer Area
add	
set	
start	
trace	
netsh	
scenario=directaccess	
provider=Microsoft-Windows-DNS-Client	

### QUESTION 94

A user is unable to log on to a client computer that runs Windows 7. The user receives an error message that says "The local policy of this system does not permit you to logon interactively." The user belongs only to the Users group. You need to ascertain which policy in the local security policy must be modified. Which security policy should you select? To answer, select the appropriate policy in the work area.

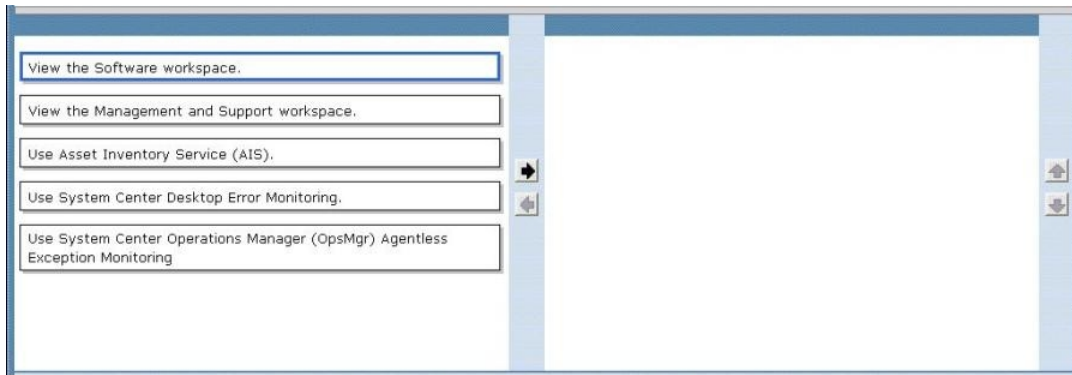


**Answer:**

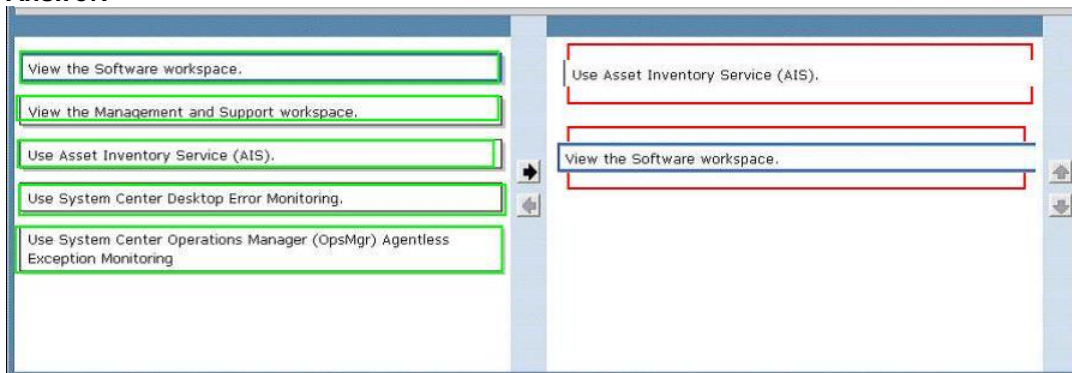


### QUESTION 95

You upgrade all of an organization's client computers to Windows 7. After the upgrade, a specific legacy application does not function correctly. You need to generate a list of all the computers that have the legacy application installed. Which two actions should you perform? (To answer, move the appropriate action from the list of actions to the answer area and arrange them in the correct order.)



**Answer:**



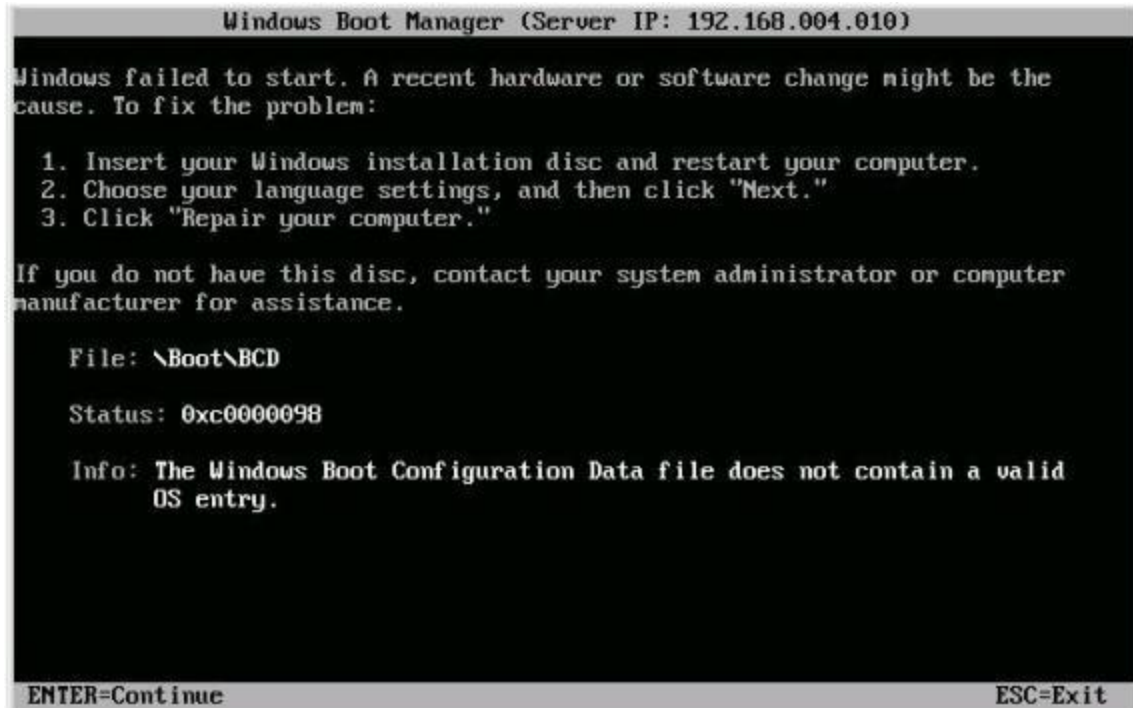
**QUESTION 96**

You are using Windows Deployment Services (WDS) to deploy new images of Windows 7 to 64-bit computers.

Technicians receive the error message shown in the exhibit when they attempt to boot by using PXE.

You need to ensure that the technicians can boot the client computers by using PXE.

What should you do? (Choose all that apply.)



- A. Run the bcdedit/set {ntldr} description "Windows 7 32-bit" command.
- B. Add a 64-bit boot image to the WDS server.
- C. Add a 64-bit install image to the WDS serve
- D. Add a 32-bit boot image to the WDS server.
- E. Run the bcdedit/set {ntldr} description "Windows 7 64-bit" command.
- F. Add a 32-bit install image to the WDS server.

**Answer: BD**

#### **QUESTION 97**

A company runs Windows Server 2008 R2 in an Active Directory Domain Services (AD DS) environment.

Windows 7 is installed on all the companys client computers.

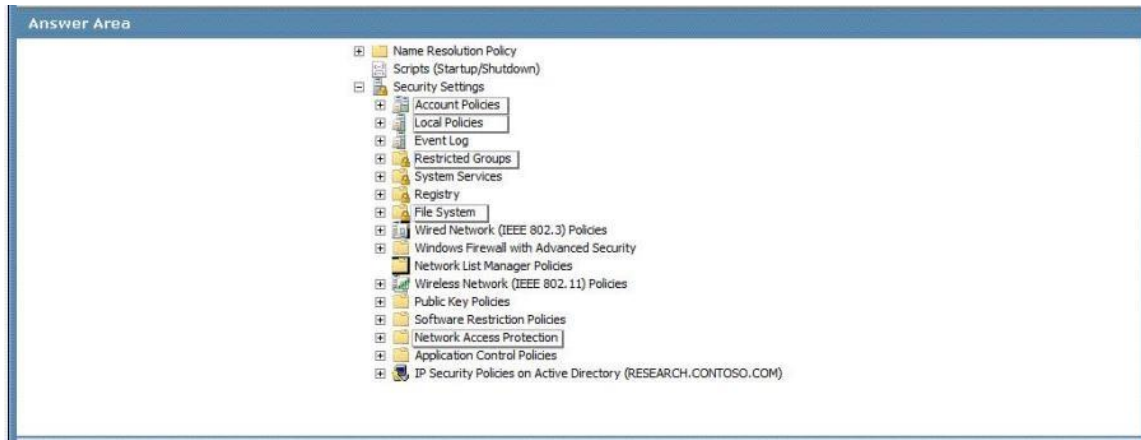
You add a domain user account named User1 to the local Administrators group on a client computer named PC01.

When User1 returns to the office, User1 does not have administrative access on PC01.

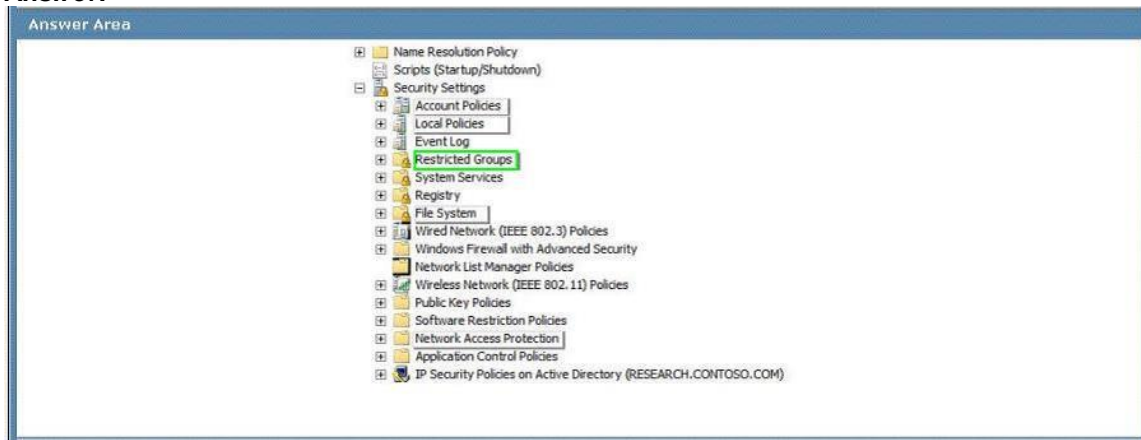
When you inspect PC01, you find that the local Administrators group does not contain the user account.

You need to ensure that User1 is a member of the local Administrators group.

Which Group Policy setting should you select? To answer, select the appropriate Group Policy setting in the work area.



**Answer:**



#### **QUESTION 98**

You are planning a deployment of Windows 7 on multiple client computers.

You need to recommend a Windows 7 deployment solution that meets the following requirements:

- Must support the deployment of WIM or VHD
- Must support deployment by using multicast

What should you include in the recommendations?

- A. System Center Configuration Manager 2010
- B. Microsoft Deployment Toolkit (MDT)
- C. Deployment Image Servicing and Management (DISM)
- D. Windows Deployment Services

**Answer: D**

#### **QUESTION 99**

You are planning a Windows 7 deployment infrastructure for a new company.

You have the following requirements:

- Three domains
- 10,000 client computers
- No user interaction

You need to recommend a deployment infrastructure.

What should you recommend?

- A. Deploy Microsoft System Center Configuration Manager 2007 R2.



- Design a zero-touch installation.
- B. Deploy Microsoft System Center Virtual Machine Manager.  
Design a lite-touch installation
- C. Deploy Microsoft System Center Operations Manager 2007 R2.  
Design a lite-touch installation.
- D. Deploy Microsoft Deployment Toolkit (MDT) 2010.  
Design a zero-touch installation.

**Answer:** A

**Explanation:**

Hints:

no user interaction = zero touch

**QUESTION 100**

Your network contains an Active Directory domain.

You plan to deploy Windows 7 by using zero-touch installation.

You need to test the zero-touch installation on a computer named computer1.

You create a computer account for Computer1.

What should you do next?

- A. Create a computer collection that contains the computer account for computer1.
- B. Create a distribution group that contains the computer account for computer1.
- C. Create a child domain and move the computer account for computer1 to the child domain.
- D. Create a security group that contains the computer account for computer1.

**Answer:** B

**Explanation:**

Original answer is B but some ppl believe is A. so i put it as A

-----  
CheddaBob from United States-Apr 18 2012, 8:40 PM Report Spam @looller

Answer is A.

I took the test late December. I used a different dump that had the correct answer.

-----  
looller from United States-Apr 17 2012, 9:42 PM Report Spam

I think the answer is "A" here? anyone agree? answer given is B