

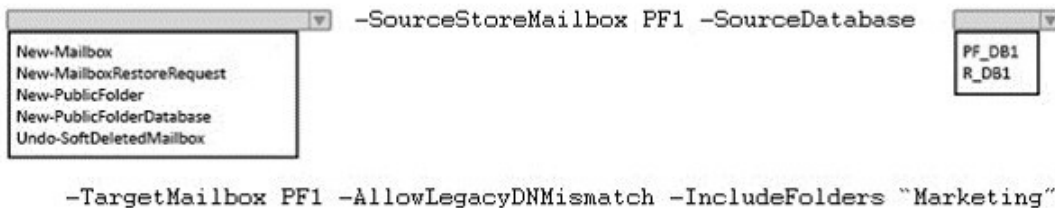
- **Vendor: Microsoft**
- **Exam Code: 70-345**
- **Exam Name: Designing and Deploying Microsoft Exchange Server 2016**
- **Question 41 – Question 50**

[Visit PassLeader and Download Full Version 70-345 Exam Dumps](#)

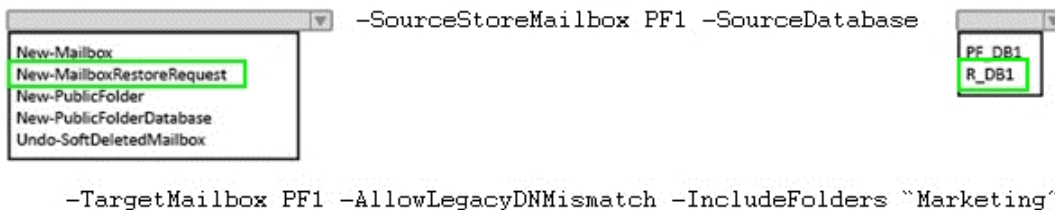
**QUESTION 41**

Hotspot Question

You have an Exchange Server 2016 organization. You have a mailbox database named PF\_DB1 that contains a public folder mailbox named PF1. PF1 contains a public folder named Marketing. Three weeks ago, a user deleted the Marketing folder. You restore the database files from the last full backup to a recovery database named R\_DB1. You need to recover Marketing folder. What command should you run? To answer, select appropriate options in the answer area.



**Answer:**



**QUESTION 42**

Your company has two offices. The offices are located in San Francisco and Los Angeles. Each office contains a data center. Each data center has a local connection to the Internet. You deploy an Exchange Server 2016 organization named Contoso and install three servers in each data center. All of the servers are members of a single database availability group (DAG). Each data center hosts 2,000 mailboxes that replicate to the other data center. You create four records in DNS. The records are configured as shown in the following table.

Record Name	Type	Points to	Zone
Lamail.contoso.com	A	Los Angeles data center	Public
Sfmail.contoso.com	A	San Francisco data center	Public
Mail.contoso.com	CNAME	Lamail.contoso.com Sfmail.contoso.com	Public
Mail.contoso.com	A	Los Angeles data center	Internal

You need to recommend a client access solution for the organization to meet the following requirements: When connecting from the Internet, all users must connect to the same namespace for Outlook on the Web. If a connection to the Internet fails at one data center, all users must be able to access their mailbox from the Internet. When connecting from the Internet, all user connections to Exchange ActiveSync must be balanced equally across both data centers. What is the best recommendation to achieve the goal? More than one answer choice may achieve the goal. Select the BEST answer.

- A. in the San Francisco office, configure the internal URLs of the servers to use the internal URLofsfmail.contoso.com. In the Los Angeles office, configure
- B. in the San Francisco office, configure the external URLs of the servers to use the internal URLofsfmail.contoso.com. In the Los Angeles office, configure
- C. Deploy a hardware-based load balancer to each office and configure all of the internal URLs to use mail.contoso.com
- D. Deploy a hardware-based load balancer to each office and configure all of the external URLs to use mail.contoso.com

**Answer: D**

**QUESTION 43**

Your network contains a single Active Directory forest. The forest contains two sites named Site1 and Site2. You have an Exchange Server 2016 organization. The organization contains two servers in each site. You have a database availability group (DAG) that spans both sites. The file share witness is in Site1. If a power failure occurs at Site1, you plan to mount the databases in Site2. When the power is restored in Site1, you need to prevent the databases from mounting in Site1. What should you do?

- A. Disable AutoReseed for the DAG.
- B. Implement an alternate file share witness.
- C. Configure Datacenter Activation Coordination (DAC) mode.
- D. Force a rediscovery of the network when the power is restored.

**Answer: C**

**Explanation:**

[https://technet.microsoft.com/en-us/library/dd979790\(v=exchg.150\).aspx](https://technet.microsoft.com/en-us/library/dd979790(v=exchg.150).aspx)

**QUESTION 44**

You have an Exchange Server 2016 organization. The organization contains three Mailbox servers. The servers are configured as shown in the following table:

Server Name	Active Directory site
EX01	Site1
EX02	Site2
EX03	Site3

You have distribution group named Group1. Group1 contains three members. The members are configured as shown in the following table.

User Name	Mailbox server
User1	EX01
User2	EX02
User3	EX03

You discover that when User1 sends email messages to Group1, all of the messages are delivered to EX02 first. You need to identify why the email messages sent to Group1 are sent to EX02 instead. What should you identify?

- A. EX02 is configured as an expansion server.
- B. The arbitration mailbox is hosted on EX02.
- C. Site2 has universal group membership caching enabled.
- D. Site2 is configured as a hub site.

**Answer: A**

**Explanation:**

[https://technet.microsoft.com/en-us/library/aa998825\(v=exchg.150\).aspx](https://technet.microsoft.com/en-us/library/aa998825(v=exchg.150).aspx)

**QUESTION 45**

Your network contains an Active Directory forest that has the site topology shown in the diagram.



You have an Exchange Server 2016 organization. The organization contains three servers. The servers are configured as shown in the following table:

Server Name	Active Directory site
EX01	Site1
EX02	Site2
EX03	Site3

You have the users described as shown in the following table:

User Name	Mailbox server
User1	EX01
User2	EX02
User3	EX03

You need to ensure that any email messages sent from User1 to User3 are sent to EX02 first, and then delivered to EX03. What should you configure?

- A. Site 2 as a hub site
- B. EX02 as an expansion server
- C. the Exchange cost for the site link from Site 2 to Site 3
- D. the Exchange cost for the site link from Site 1 to Site 2

**Answer: A**

**Explanation:**

[https://technet.microsoft.com/en-us/library/aa998825\(v=exchg.150\).aspx](https://technet.microsoft.com/en-us/library/aa998825(v=exchg.150).aspx)

#### QUESTION 46

Your company has an Exchange Server 2016 organization and a Microsoft Office 365 subscription configured in a hybrid deployment. You configure the synchronization of on-premises Active Directory accounts to Office 365. All users connect to email services by using Outlook 2016. You plan to deploy Office 365 Message Encryption for the mailboxes of two executives named Exec1 and Exec2. The mailboxes are hosted in Office 365. You need to recommend which actions must be performed to ensure that all of the email messages sent from Exec1 and Exec2 to any recipient on the Internet are encrypted. Which two actions should you recommend? Each correct answer presents part of the solution.

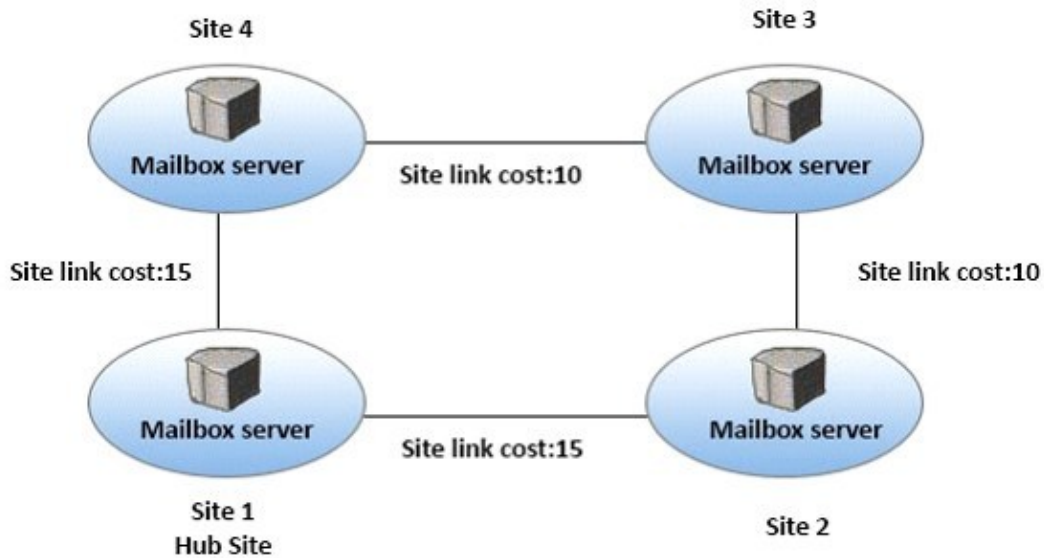
- A. Deploy Microsoft Azure Rights Management (Azure RMS) to the Office 365 subscription.
- B. Deploy Active Directory Rights Management Services (AD RMS) to the network.
- C. Run the Set-MSOLUserLicense cmdlet.
- D. From the Office 365 Exchange admin center, create a rule.
- E. Install a certificate on the computer of Exec1 and the computer of Exec2.
- F. From the on-premises Exchange admin center, create a transport rule.

**Answer: AF**

#### QUESTION 47

Hotspot Question

You have an Exchange Server 2016 organization. The Active directory sites are configured as shown in the following graphic.



Use the drop-down menus to select the answer choice that completes each statement based on the information presented in the graphic.

When a user from Site 4 sends an email message to user in Site 2, the message will be [answer choice].

▼  
 sent directly to Site 2  
 relayed through Site 1  
 relayed through Site 3

If the server in Site 2 fails, all of the email messages sent from Site 4 to Site 2 will be queued on a server in [answer choice].

▼  
 Site 1  
 Site 3  
 Site 4

**Answer:**

When a user from Site 4 sends an email message to user in Site 2, the message will be [answer choice].

▼  
 sent directly to Site 2  
 relayed through Site 1  
 relayed through Site 3

If the server in Site 2 fails, all of the email messages sent from Site 4 to Site 2 will be queued on a server in [answer choice].

▼  
 Site 1  
 Site 3  
 Site 4

**QUESTION 48**

You have three Hyper-V hosts that each have 20 processor cores and 64 GB of RAM. Nine virtual machines are deployed to the hosts as shown in the following table.

Virtual machine name	Hyper-V host name	Number of processor cores	Amount of memory (GB)
DC1	Host1	4	8
FileServer1	Host1	4	8
WAP1	Host1	4	4
DC2	Host2	4	8
SQL1	Host2	12	32
ADFS1	Host2	4	8
Skype1	Host3	12	16
SharePoint1	Host3	12	16
SCOM1	Host3	8	12

You plan to deploy a two-node Exchange Server 2016 database availability group (DAG) by using the virtual machines. Each node will have 12 processor cores and 24 GB of memory. You are evaluating whether you can use the existing servers for the deployment or whether you must purchase additional servers. You need to recommend where to place the Exchange servers. The solution must minimize costs. What is the best recommendation to achieve the goal? More than one answer choice may achieve the goal. Select the BEST answer.

- A. One Exchange server on Host1 and one Exchange server on a new Hyper-V host.
- B. One Exchange server on Host1 and one Exchange server on Host3.
- C. Both Exchange servers on Host1.
- D. One Exchange server on Host1 and one Exchange server on Host2.
- E. One Exchange server on Host2 and one Exchange server on Host3.

**Answer: E**

**QUESTION 49**

You have an Exchange Server 2016 organization. Users report that they receive an Autodiscover error when they attempt to configure a Microsoft Outlook profile. You need to view the URLs that are returned to the users when they attempt to establish an Autodiscover connection. Which command should you run from an Exchange server?

- A. Test-OutlookConnectivity
- B. Test-OutlookWebServices
- C. Test-WebServicesConnectivity
- D. Test-MAPIConnectivity

**Answer: B**

**Explanation:**

Use the Test-OutlookWebServices cmdlet to verify the Autodiscover service settings for Microsoft Outlook on a computer running Microsoft Exchange Server that has the Client Access server role installed.

**QUESTION 50**

Hotspot Question

Your company has an Exchange Server 2016 organization. You plan to allow several users to access the mailboxes of the other group. You need to ensure that a user named User1 can read and delete the email messages in the mailbox of a user named User2. User1 must add the mailbox of User2 manually to the Microsoft Outlook profile. What command should you run? To answer, select the appropriate options in the answer area.

<input type="checkbox"/> Add-MailboxFolderPermission <input type="checkbox"/> Add-MailboxPermission	<input type="checkbox"/> -Identify User1 <input type="checkbox"/> -Identify User2	<input type="checkbox"/> -User User1 <input type="checkbox"/> -User User2
<input type="checkbox"/> -AccessRight ExternalAccount <input type="checkbox"/> -AccessRight FullAccess <input type="checkbox"/> -AccessRight ReadPermission	<input type="checkbox"/> -Atomapping \$false <input type="checkbox"/> -Atomapping \$true <input type="checkbox"/> -Confirm \$false <input type="checkbox"/> -Confirm \$true	<input type="checkbox"/> -inheritanceType A11

**Answer:**

<input type="checkbox"/> Add-MailboxFolderPermission <input checked="" type="checkbox"/> Add-MailboxPermission	<input type="checkbox"/> -Identify User1 <input checked="" type="checkbox"/> -Identify User2	<input checked="" type="checkbox"/> -User User1 <input type="checkbox"/> -User User2
<input type="checkbox"/> -AccessRight ExternalAccount <input type="checkbox"/> -AccessRight FullAccess <input type="checkbox"/> -AccessRight ReadPermission	<input type="checkbox"/> -Atomapping \$false <input type="checkbox"/> -Atomapping \$true <input type="checkbox"/> -Confirm \$false <input type="checkbox"/> -Confirm \$true	<input type="checkbox"/> -inheritanceType A11

[Visit PassLeader and Download Full Version 70-345 Exam Dumps](#)