

- **Vendor: Cisco**
- **Exam Code: 640-911**
- **Exam Name: Introducing Cisco Data Center Networking (DCICN)**
- **Question 151 – End**

[Visit PassLeader and Download Full Version 640-911 Exam Dumps](#)

QUESTION 151

There are native VLAN mismatch errors in both switch system logs. An engineer changed the native VLAN to VLAN 50 on switch 2. The commands switchport trunk allowed VLAN add 50 and switchport trunk native VLAN 50 are executed on switch 2. What two events will result from executing these commands? (Choose two.)

- A. Native VLAN mismatch errors cease in the system log.
- B. Native VLAN mismatch errors continue in the system log.
- C. VLAN's 10,20,31, and 50 forward traffic.
- D. VLAN's 10,20, and 31 forward traffic while 50 forwards untagged traffic.
- E. VLAN's 10, 20, and 31 forward traffic, 50 remains down.
- F. Native VLAN mismatch error disables the ports on both switches.

Answer: BE

QUESTION 152

When configuring a trunk port on a Nexus switch, what two options must be configured before the port will participate in a 802.1Q trunk group? (Choose two.)

- A. configure a native VLAN
- B. enable trunking
- C. set port speed and duplex
- D. configure 802.1Q encapsulation
- E. enable spanning tree loop-guard

Answer: AB

QUESTION 153

A network engineer is verifying Layer 2 connectivity of a server to a Cisco Nexus switch by checking Address Resolution Protocol table statistics. Which command shows the MAC address, physical interface, VLAN, and IP address of a server on a Cisco Nexus switch?

- A. show ip arp detail
- B. show ip arp
- C. show ip arp interface
- D. show arp detail

Answer: A

QUESTION 154

What is the most efficient Class C IP subnet that allows for at least 67 usable host addresses?

- A. 192.168.67.0 255.255.128.0
- B. 172.16.100.0 255.255.255.128
- C. 192.168.100.0 255.255.255.128
- D. 10.100.100.0 255.255.255.128
- E. 172.16.67.0 255.255.128.0
- F. 10.100.67.0 255.255.128.0

Answer: C

QUESTION 155

A router cannot forward packets to supernets. What are two causes of this problem? (Choose two.)

- A. The router is configured with Classless IP routing.
- B. The router is configured with Classfull IP routing.
- C. IP Classless command is not configured on the router.
- D. Only static routing is configured.
- E. Variable Length Subnet Mask is not used in choosing the IP addresses.

Answer: BC

QUESTION 156

What range of IP addresses could be used in an external public zone of a data center?

- A. 172.32.192.0/19
- B. 224.100.34.0/32
- C. 10.88.45.0/24
- D. 209.165.201.0/27
- E. 192.168.11.32/28

Answer: D

QUESTION 157

What two address and subnet combinations are properly matched? (Choose two.)

- A. 10.230.33.15/28
- B. 10.32.11.67/27
- C. 172.16.255.255/14
- D. 172.25.44.96/26
- E. 192.168.73.223/29

Answer: BC

QUESTION 158

What does RFC 4193 define?

- A. IPv6 private network address space
- B. IPv4 private network address space
- C. unique local address
- D. link-local address

Answer: A

QUESTION 159

Which two options are multicast addresses? (Choose two.)

- A. 239.1.1.255
- B. FF05::2
- C. 127.0.0.1
- D. 192.168.2.2
- E. FF05:0001:0:0:0:0:BAC0
- F. FD00::2

Answer: AB

QUESTION 160

What are three important factors when configuring VTP on the Cisco Nexus switching platform? (Choose three.)

- A. VLAN 1 must be disabled on the trunk port in order for VTP to work properly.
- B. The VDC administrator or network administrator must enable VTP on the device.
- C. VTP is enabled on all trunk ports by default.
- D. It does not matter which VDC you are working in when you configure VTP on the Cisco Nexus 7000.
- E. For a device operating in VTP client mode, the password and domain name must be properly set.
- F. In VTP server mode, the device will store VLAN information in bootflash.
- G. Per device, VTP configuration is stored in a file named vtp.conf.
- H. VTP pruning can be used on Cisco NX-OS devices.

Answer: BFG

QUESTION 161

An engineer has implemented EIGRP in the data center with a large OSPF routed environment. All EIGRP routes were functioning properly until enabling EIGRP route summarization. Legacy OSPF routes are now being used for route selection. Why have the routes changed?

- A. EIGRP summary routes have a higher administrative distance than EIGRP specific routes
- B. reduce the administrative distance for the EIGRP summarized routes
- C. OSPF has a more specific route with EIGRP summarization enabled
- D. increase the administrative distance for the OSPF route process
- E. modify the bandwidth and delay metrics to be preferential over OSPF

Answer: A

QUESTION 162

What option tests hardware to verify that all components of the device are operational and present?

- A. NVRAM

- B. POST
- C. BIOS
- D. Bootstrap

Answer: B

QUESTION 163

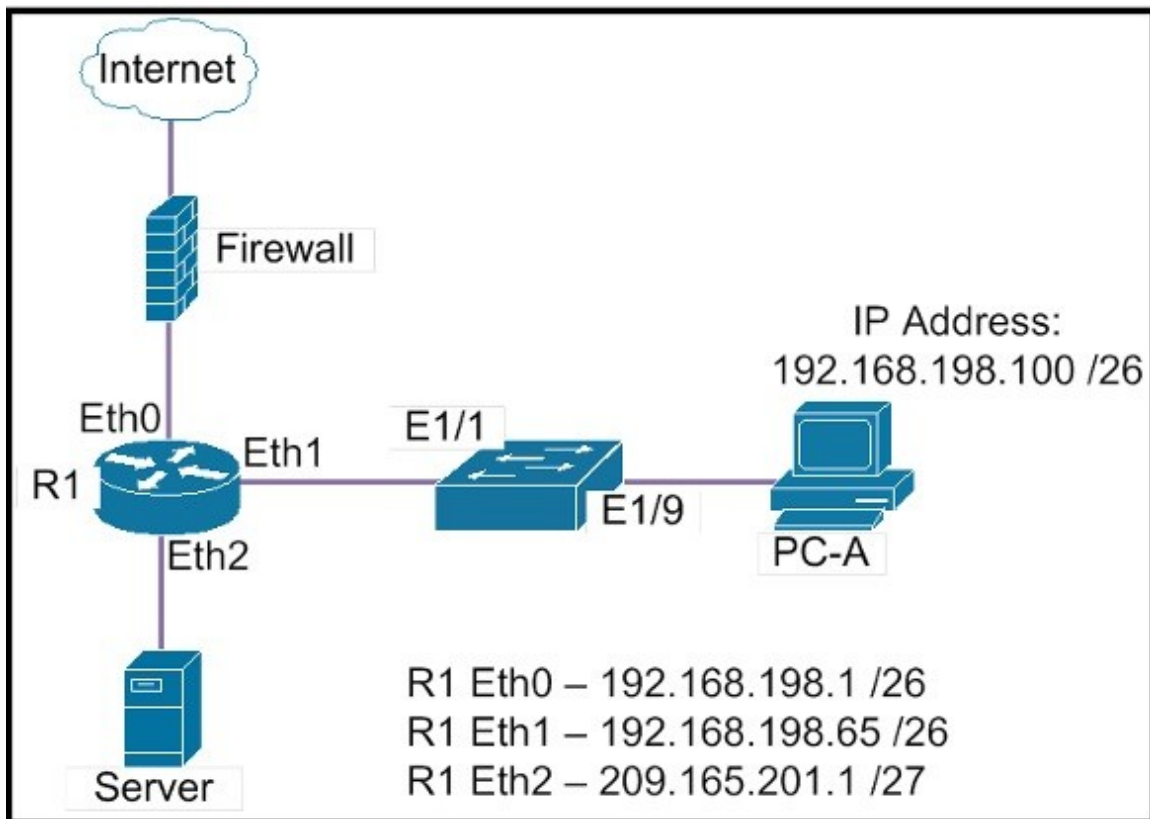
Where are start-up configurations saved on a Cisco router?

- A. Flash
- B. ROM
- C. NVRAM
- D. Boot Flash

Answer: C

QUESTION 164

Refer to the exhibit. When PC-A communicates with the Server what will the source MAC address be in the received frames at PC-A?

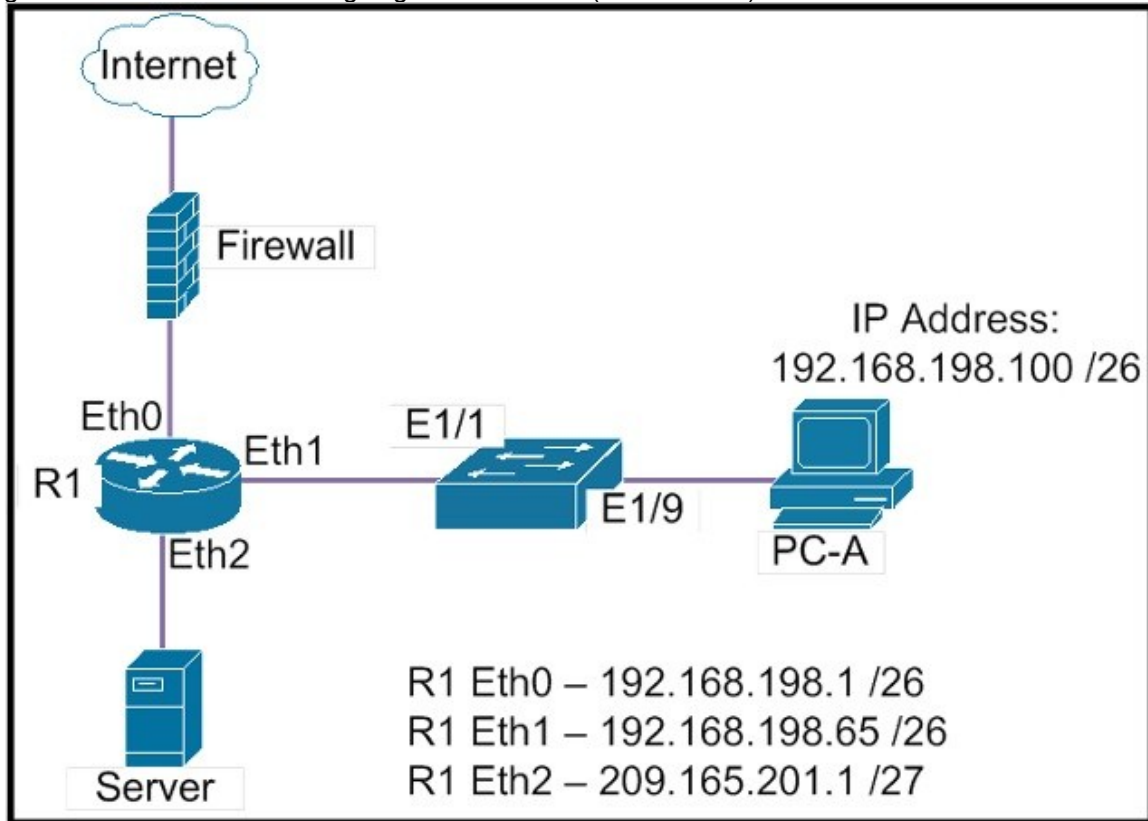


- A. MAC address of router interface Eth1
- B. MAC address of router interface Eth2
- C. MAC address of the NIC in the Server
- D. MAC address of switch interface E1/9

Answer: A

QUESTION 165

Refer to the exhibit. What two destination addresses will be in the packet and frame header generated at PC-A for traffic going to the Server? (Choose two.)

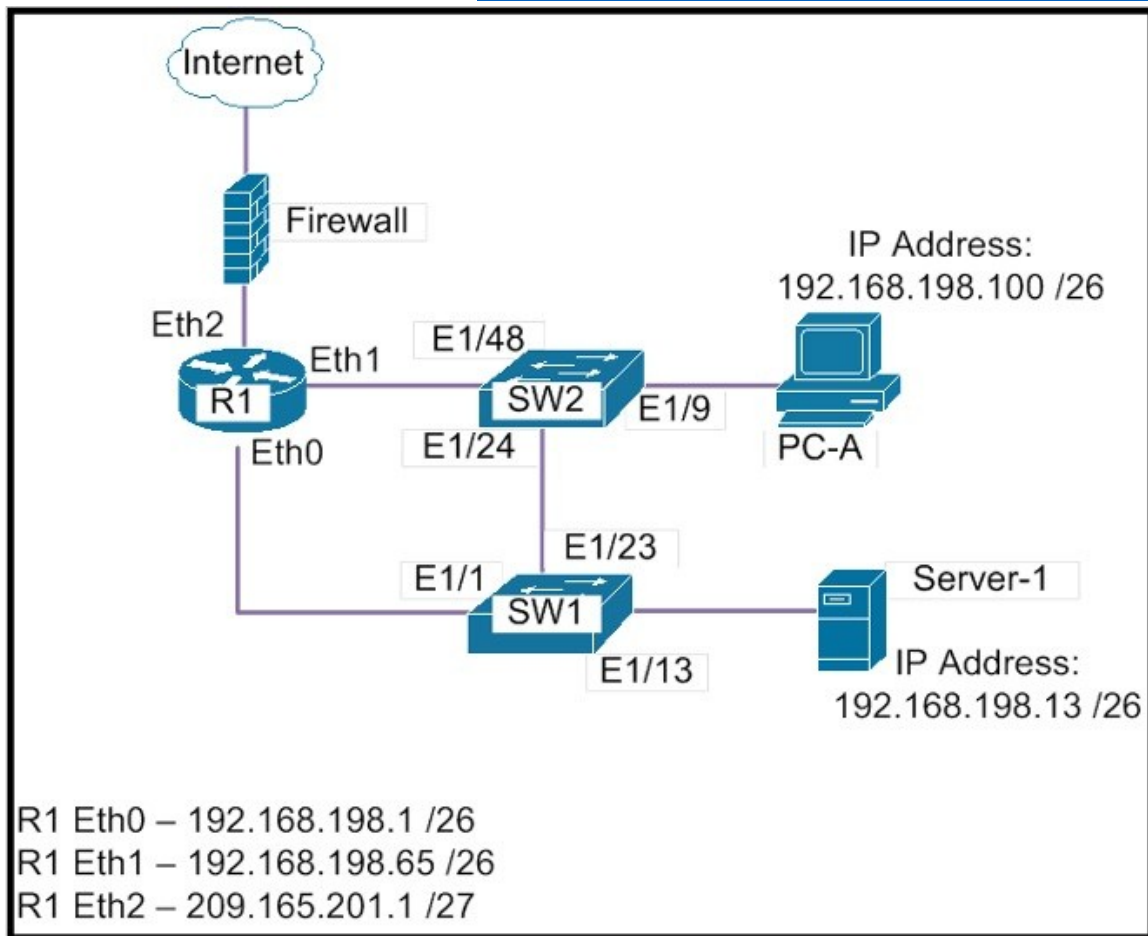


- A. IP address of the Server
- B. MAC address of router interface eth1
- C. IP address of router interface Eth1
- D. MAC address of the Server
- E. IP address of switch interface E1/9
- F. MAC address of switch interface E1/9

Answer: AB

QUESTION 166

Refer to the exhibit. What will the two resulting tables be on R1 after traffic has successfully passed between Server-1 and PC-A? (Choose two.)



- A. The IP address and MAC of Server-1 will be associated with R1 interface Eth0.
- B. The IP address and MAC of PC-A will be associated with R1 interface Eth1.
- C. The IP address of Server-1 and MAC address of SW1 interface E1/1 will be associated with R1 interface Eth0.
- D. The IP address of PC-A and MAC address of SW2 interface E1/48 will be associated with R1 interface Eth1.
- E. The IP address of Server-1 and MAC address of SW1 interface E1/13 will be associated with R1 interface Eth0.
- F. The IP address of PC-A and MAC address of SW2 interface E1/9 will be associated with R1 interface Eth1.

Answer: AB

QUESTION 167

For a router to do an IP routing process, which part of a packet must be checked before consulting the routing table?

- A. destination IP address
- B. source IP address
- C. destination MAC address
- D. source MAC address

Answer: A

QUESTION 168

A design team is upgrading hubs to Layer 2 switches to decrease the number of collisions caused by media access control method. Which media access control protocol is affected by this change?

- A. CSMA/CA
- B. CSMA/CD
- C. CSU/DSU
- D. 802.1q

Answer: B

QUESTION 169

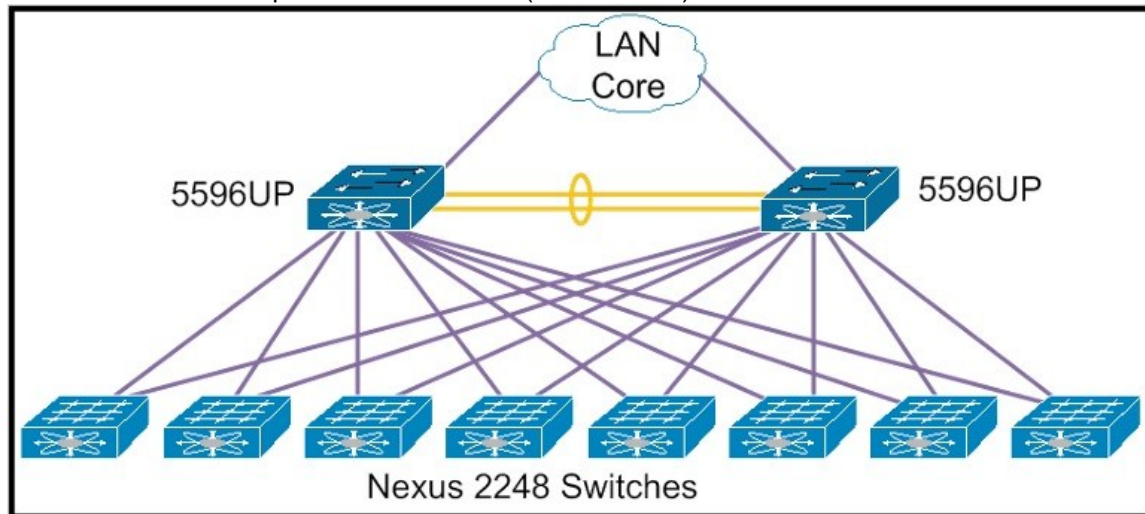
In which Cisco IOS mode of a Cisco router could an engineer issue show commands for verification purposes?

- A. enable EXEC mode
- B. user EXEC mode
- C. global configuration mode
- D. interface level mode

Answer: A

QUESTION 170

Refer to the exhibit. Both Cisco Nexus 5596UP Switches have one Layer 3 card installed each. Which two additional options are available? (Choose two.)



- A. Eight additional Cisco Nexus 2000 switches can be connected in the same manner.
- B. Sixteen additional Cisco Nexus 2000 switches can be connected eight individually to each 5596.
- C. One additional Layer 3 expansion module can be installed in each 5596 to increase the Layer 3 forwarding capability.
- D. FEX ports can be configured as router ports, extending Layer 3 redundancy to top of rack.
- E. FEX ports can be configured for FCoE, reducing cabling footprint.
- F. Sixteen additional Cisco Nexus 2000 switches can be connected in the same manner.

Answer:

[Visit PassLeader and Download Full Version 640-911 Exam Dumps](#)